

Datasheet for ABIN2782155
anti-GNS antibody (C-Term)[Go to Product page](#)

3 Images

Overview

| | |
|----------------------|---|
| Quantity: | 100 µL |
| Target: | GNS |
| Binding Specificity: | C-Term |
| Reactivity: | Human, Mouse, Rat, Cow, Goat, Guinea Pig, Horse, Rabbit, Dog, Zebrafish (Danio rerio) |
| Host: | Rabbit |
| Clonality: | Polyclonal |
| Conjugate: | This GNS antibody is un-conjugated |
| Application: | Western Blotting (WB), Immunohistochemistry (IHC) |

Product Details

| | |
|-----------------------|---|
| Immunogen: | The immunogen is a synthetic peptide directed towards the C terminal region of human GNS |
| Sequence: | PILRGASNLT WRSDVLVEYQ GEGRNVTDPDTP CPSLSPGVQSQ CFPDCVCEDA |
| Predicted Reactivity: | Cow: 100%, Dog: 93%, Goat: 100%, Guinea Pig: 100%, Horse: 100%, Human: 100%, Mouse: 100%, Rabbit: 100%, Rat: 100%, Zebrafish: 85% |
| Characteristics: | This is a rabbit polyclonal antibody against GNS. It was validated on Western Blot using a cell lysate as a positive control. |
| Purification: | Affinity Purified |

Target Details

| | |
|---------|-----|
| Target: | GNS |
|---------|-----|

Target Details

| | |
|-------------------|--|
| Alternative Name: | GNS (GNS Products) |
| Background: | <p>GNS is a lysosomal enzyme found in all cells. It is involved in the catabolism of heparin, heparin sulphate, and keratan sulphate. Deficiency of this enzyme results in the accumulation of undegraded substrate and the lysosomal storage disorder mucopolysaccharidosis type IIID (Sanfilippo D syndrome). Mucopolysaccharidosis type IIID is the least common of the four subtypes of Sanfilippo syndrome. The product of this gene is a lysosomal enzyme found in all cells. It is involved in the catabolism of heparin, heparan sulphate, and keratan sulphate. Deficiency of this enzyme results in the accumulation of undegraded substrate and the lysosomal storage disorder mucopolysaccharidosis type IIID (Sanfilippo D syndrome). Mucopolysaccharidosis type IIID is the least common of the four subtypes of Sanfilippo syndrome.</p> <p>Alias Symbols: G6S, MGC21274</p> <p>Protein Interaction Partner: LDHAL6B, BCCIP, UBFD1, CNBP2, SCLY, C11orf58, GDA, KYNU, RPS6KA1, PEPD, MVD, GLS, GLA, GBP2, G6PD, EIF5A, CASP7, CAPN1, FBXO6, UBC,</p> <p>Protein Size: 552</p> |
| Molecular Weight: | 62 kDa |
| Gene ID: | 2799 |
| NCBI Accession: | NM_002076 , NP_002067 |
| UniProt: | P15586 |
| Pathways: | Glycosaminoglycan Metabolic Process |

Application Details

| | |
|--------------------|--|
| Application Notes: | Optimal working dilutions should be determined experimentally by the investigator. |
| Comment: | Antigen size: 552 AA |
| Restrictions: | For Research Use only |

Handling

| | |
|----------------|---|
| Format: | Liquid |
| Concentration: | Lot specific |
| Buffer: | Liquid. Purified antibody supplied in 1x PBS buffer with 0.09 % (w/v) sodium azide and 2 % sucrose. |

Handling

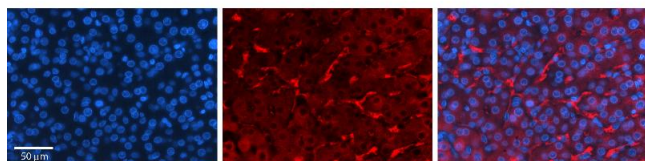
| | |
|--------------------|---|
| Preservative: | Sodium azide |
| Precaution of Use: | This product contains Sodium azide: a POISONOUS AND HAZARDOUS SUBSTANCE which should be handled by trained staff only. |
| Handling Advice: | Avoid repeated freeze-thaw cycles. |
| Storage: | -20 °C |
| Storage Comment: | For short term use, store at 2-8°C up to 1 week. For long term storage, store at -20°C in small aliquots to prevent freeze-thaw cycles. |

Images



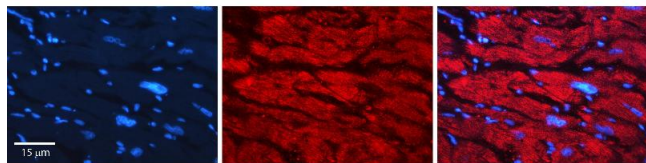
Western Blotting

Image 1. WB Suggested Anti-GNS Antibody Titration: 0.2-1 ug/ml ELISA Titer: 1:312500 Positive Control: Human Liver



Immunohistochemistry

Image 2. Rabbit Anti-GNS Antibody Formalin Fixed Paraffin Embedded Tissue: Human Liver Tissue Observed Staining: Cytoplasm in Kupffer cells in sinusoids Primary Antibody Concentration: 1:100 Other Working Concentrations: N/A Secondary Antibody: Donkey anti-Rabbit-Cy3 Secondary Antibody Concentration: 1:200 Magnification: 20X Exposure Time: 0.5 - 2.0 sec



Immunohistochemistry

Image 3. Rabbit Anti-GNS Antibody Formalin Fixed Paraffin Embedded Tissue: Human heart Tissue Observed Staining: Cytoplasmic Primary Antibody Concentration: 1:100 Other Working Concentrations: N/A Secondary Antibody: Donkey anti-Rabbit-Cy3 Secondary Antibody Concentration: 1:200 Magnification: 20X Exposure Time: 0.5 - 2.0 sec