

Datasheet for ABIN2782163
anti-ITGB8 antibody (C-Term)

3 Images

[Go to Product page](#)

Overview

Quantity:	100 µL
Target:	ITGB8
Binding Specificity:	C-Term
Reactivity:	Human, Mouse, Rat, Pig, Rabbit, Cow, Dog, Guinea Pig, Horse
Host:	Rabbit
Clonality:	Polyclonal
Conjugate:	This ITGB8 antibody is un-conjugated
Application:	Western Blotting (WB)

Product Details

Immunogen:	The immunogen is a synthetic peptide directed towards the C terminal region of human ITGB8
Sequence:	CTDPRSIGRF CEHCPTCYTA CKENWNCMQC LHPHNLSQAI LDQCKTSCAL
Predicted Reactivity:	Cow: 100%, Dog: 92%, Guinea Pig: 86%, Horse: 100%, Human: 100%, Mouse: 93%, Pig: 100%, Rabbit: 100%, Rat: 93%
Characteristics:	This is a rabbit polyclonal antibody against ITGB8. It was validated on Western Blot using a cell lysate as a positive control.
Purification:	Affinity Purified

Target Details

Target:	ITGB8
---------	-------

Target Details

Alternative Name:	ITGB8 (ITGB8 Products)
Background:	<p>ITGB8 is a member of the integrin beta chain family and is a single-pass type I membrane protein with a VWFA domain and four cysteine-rich repeats. This protein noncovalently binds to an alpha subunit to form a heterodimeric integrin complex. In general, integrin complexes mediate cell-cell and cell-extracellular matrix interactions and this complex plays a role in human airway epithelial proliferation. This gene is a member of the integrin beta chain family and encodes a single-pass type I membrane protein with a VWFA domain and four cysteine-rich repeats. This protein noncovalently binds to an alpha subunit to form a heterodimeric integrin complex. In general, integrin complexes mediate cell-cell and cell-extracellular matrix interactions and this complex plays a role in human airway epithelial proliferation. Alternatively spliced variants which encode different protein isoforms have been described, however, not all variants have been fully characterized.</p> <p>Alias Symbols: -</p> <p>Protein Interaction Partner: UBC, ITGAV, VTN, TGFB1,</p> <p>Protein Size: 769</p>
Molecular Weight:	81 kDa
Gene ID:	3696
NCBI Accession:	NM_002214 , NP_002205
UniProt:	P26012

Application Details

Application Notes:	Optimal working dilutions should be determined experimentally by the investigator.
Comment:	Antigen size: 769 AA
Restrictions:	For Research Use only

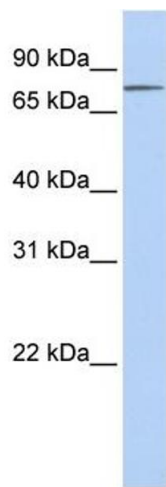
Handling

Format:	Liquid
Concentration:	Lot specific
Buffer:	Liquid. Purified antibody supplied in 1x PBS buffer with 0.09 % (w/v) sodium azide and 2 % sucrose.
Preservative:	Sodium azide

Handling

Precaution of Use:	This product contains Sodium azide: a POISONOUS AND HAZARDOUS SUBSTANCE which should be handled by trained staff only.
Handling Advice:	Avoid repeated freeze-thaw cycles.
Storage:	-20 °C
Storage Comment:	For short term use, store at 2-8°C up to 1 week. For long term storage, store at -20°C in small aliquots to prevent freeze-thaw cycles.

Images



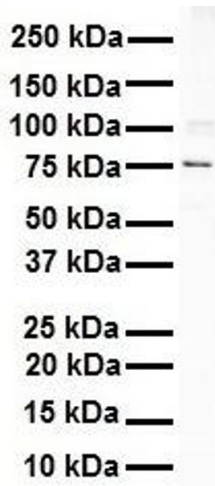
Western Blotting

Image 1. WB Suggested Anti-ITGB8 Antibody Titration: 0.2-1 ug/ml ELISA Titer: 1:312500 Positive Control: Human Placenta



Western Blotting

Image 2. Host: Rabbit Target Name: ITGB8 Sample Type: Human Kidney Antibody Dilution: 1.0 ug/ml



Western Blotting

Image 3. WB Suggested Anti-ITGB8 antibody Titration: 1 ug/mL Sample Type: Human Raji