

Datasheet for ABIN2782169
anti-LRCH4 antibody (Middle Region)[Go to Product page](#)

1 Image

Overview

Quantity:	100 µL
Target:	LRCH4
Binding Specificity:	Middle Region
Reactivity:	Human, Mouse, Rat, Horse, Rabbit, Cow, Guinea Pig, Dog, Zebrafish (Danio rerio), Saccharomyces cerevisiae
Host:	Rabbit
Clonality:	Polyclonal
Conjugate:	This LRCH4 antibody is un-conjugated
Application:	Western Blotting (WB)

Product Details

Immunogen:	The immunogen is a synthetic peptide directed towards the middle region of human LRCH4
Sequence:	PGHRYDGGLD SGFHSVDSGS KRWSGNESTD EFSELSFRIS ELAREPRGPR
Predicted Reactivity:	Cow: 100%, Dog: 100%, Guinea Pig: 100%, Horse: 100%, Human: 100%, Mouse: 100%, Rabbit: 100%, Rat: 100%, Yeast: 90%, Zebrafish: 93%
Characteristics:	This is a rabbit polyclonal antibody against LRCH4. It was validated on Western Blot using a cell lysate as a positive control.
Purification:	Affinity Purified

Target Details

Target:	LRCH4
---------	-------

Target Details

Alternative Name:	LRCH4 (LRCH4 Products)
Background:	<p>LRCH4 is a protein that contains leucine-rich repeats (LRR) at its amino terminus and that is known to be involved in ligand binding. The carboxyl terminus may act as a membrane anchor. Identified structural elements suggest that this protein resembles a receptor. This gene encodes a protein that contains leucine-rich repeats (LRR) at its amino terminus and that is known to be involved in ligand binding. The carboxyl terminus may act as a membrane anchor. Identified structural elements suggest that the encoded protein resembles a receptor.</p> <p>Alias Symbols: FLJ40101, FLJ46315, LRN, LRRN1, LRRN4, PP14183, SAP25</p> <p>Protein Interaction Partner: NOTCH2NL, KRTAP10-8, KRTAP10-7, KRT40, FBXW11, DOCK7, SUGT1, MDFI, TADA2A, SIN3A, RTN4, CA8, RBBP6,</p> <p>Protein Size: 683</p>
Molecular Weight:	73 kDa
Gene ID:	4034
NCBI Accession:	NM_002319 , NP_002310
UniProt:	O75427

Application Details

Application Notes:	Optimal working dilutions should be determined experimentally by the investigator.
Comment:	Antigen size: 683 AA
Restrictions:	For Research Use only

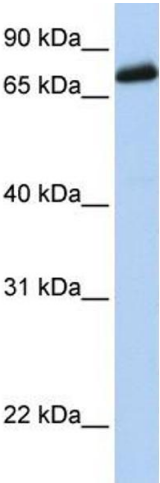
Handling

Format:	Liquid
Concentration:	Lot specific
Buffer:	Liquid. Purified antibody supplied in 1x PBS buffer with 0.09 % (w/v) sodium azide and 2 % sucrose.
Preservative:	Sodium azide
Precaution of Use:	This product contains Sodium azide: a POISONOUS AND HAZARDOUS SUBSTANCE which should be handled by trained staff only.
Handling Advice:	Avoid repeated freeze-thaw cycles.

Handling

Storage:	-20 °C
Storage Comment:	For short term use, store at 2-8°C up to 1 week. For long term storage, store at -20°C in small aliquots to prevent freeze-thaw cycles.

Images



Western Blotting

Image 1. WB Suggested Anti-LRCH4 Antibody Titration: 0.2-1 ug/ml Positive Control: Transfected 293T