

Datasheet for ABIN2782171
anti-LRPAP1 antibody (C-Term)[Go to Product page](#)

2 Images

Overview

Quantity:	100 µL
Target:	LRPAP1
Binding Specificity:	C-Term
Reactivity:	Human, Mouse, Rat, Dog, Horse, Guinea Pig, Cow
Host:	Rabbit
Clonality:	Polyclonal
Conjugate:	This LRPAP1 antibody is un-conjugated
Application:	Western Blotting (WB), Immunohistochemistry (IHC)

Product Details

Immunogen:	The immunogen is a synthetic peptide directed towards the C terminal region of human LRPAP1
Sequence:	IDLWDLAQSA NLTDKELEAF REELKHFEAK IEKHNHYQKQ LEIAHEKLRH
Predicted Reactivity:	Cow: 93%, Dog: 100%, Guinea Pig: 100%, Horse: 100%, Human: 100%, Mouse: 100%, Rat: 100%
Characteristics:	This is a rabbit polyclonal antibody against LRPAP1. It was validated on Western Blot and immunohistochemistry.
Purification:	Protein A purified

Target Details

Target:	LRPAP1
---------	--------

Target Details

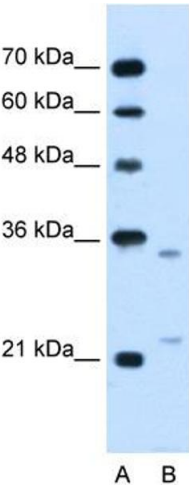
Alternative Name:	LRPAP1 (LRPAP1 Products)
Background:	<p>LRPAP1 interacts with LRP1/alpha-2-macroglobulin receptor and glycoprotein 330.</p> <p>Alias Symbols: A2MRAP, A2RAP, HBP44, MGC138272, MRAP, RAP</p> <p>Protein Interaction Partner: UBC, ETV7, SUMO2, SUMO1, RANBP2, LRP1B, POLA2, PPM1G, RTN4, LDLR, LRP8, SORT1, SORL1, MAPK3, LRP2, VLDLR, MAPK1, LRP1, MTOR, EIF4EBP1, RALGDS, RALA, RAF1,</p> <p>Protein Size: 357</p>
Molecular Weight:	39 kDa
Gene ID:	4043
NCBI Accession:	NM_002337 , NP_002328
UniProt:	P30533

Application Details

Application Notes:	Optimal working dilutions should be determined experimentally by the investigator.
Comment:	Antigen size: 357 AA
Restrictions:	For Research Use only

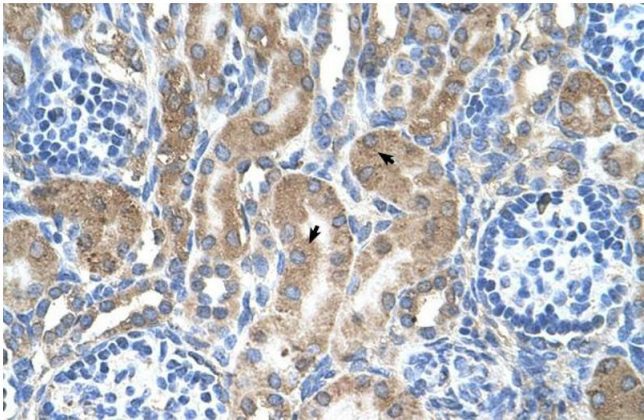
Handling

Format:	Liquid
Concentration:	Lot specific
Buffer:	Liquid. Purified antibody supplied in 1x PBS buffer with 0.09 % (w/v) sodium azide and 2 % sucrose.
Preservative:	Sodium azide
Precaution of Use:	This product contains Sodium azide: a POISONOUS AND HAZARDOUS SUBSTANCE which should be handled by trained staff only.
Handling Advice:	Avoid repeated freeze-thaw cycles.
Storage:	-20 °C
Storage Comment:	For short term use, store at 2-8°C up to 1 week. For long term storage, store at -20°C in small aliquots to prevent freeze-thaw cycles.



Western Blotting

Image 1. WB Suggested Anti-LRPAP1 Antibody Titration:
2.5ug/ml Positive Control: Jurkat cell lysate



Immunohistochemistry

Image 2. Human kidney