

Datasheet for ABIN2782175
anti-Metaxin 1 antibody (C-Term)

5 Images

[Go to Product page](#)

Overview

Quantity:	100 µL
Target:	Metaxin 1 (MTX1)
Binding Specificity:	C-Term
Reactivity:	Human, Rat, Mouse, Rabbit, Cow, Dog, Guinea Pig, Horse, Zebrafish (Danio rerio)
Host:	Rabbit
Clonality:	Polyclonal
Conjugate:	This Metaxin 1 antibody is un-conjugated
Application:	Western Blotting (WB)

Product Details

Immunogen:	The immunogen is a synthetic peptide directed towards the C terminal region of human MTX1
Sequence:	CLTLLSQRLG SQKFFFGDAP ASLDAFVFSY LALLLQAKLP SGKLQVHLRG
Predicted Reactivity:	Cow: 100%, Dog: 100%, Guinea Pig: 100%, Horse: 100%, Human: 100%, Mouse: 100%, Rabbit: 100%, Rat: 100%, Zebrafish: 93%
Characteristics:	This is a rabbit polyclonal antibody against MTX1. It was validated on Western Blot using a cell lysate as a positive control.
Purification:	Affinity Purified

Target Details

Target:	Metaxin 1 (MTX1)
---------	------------------

Target Details

Alternative Name:	MTX1 (MTX1 Products)
Background:	<p>MTX1 belongs to the metaxin family. It is involved in transport of proteins into the mitochondrion and essential for embryonic development.</p> <p>Alias Symbols: MTX, MTXN</p> <p>Protein Interaction Partner: UBC, TOMM40, CLN8, CISD1, MINOS1, MTX2, TMBIM4,</p> <p>Protein Size: 466</p>
Molecular Weight:	51 kDa
Gene ID:	4580
NCBI Accession:	NM_002455 , NP_002446
UniProt:	Q13505
Pathways:	Dicarboxylic Acid Transport

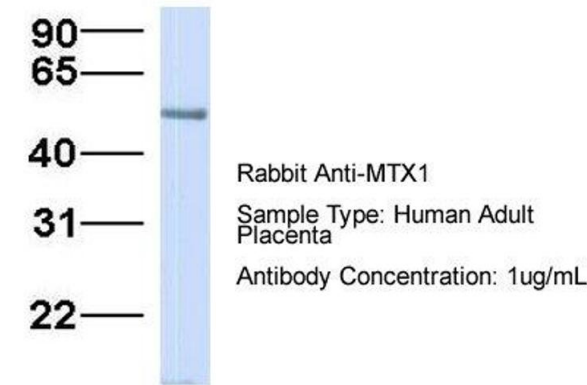
Application Details

Application Notes:	Optimal working dilutions should be determined experimentally by the investigator.
Comment:	Antigen size: 466 AA
Restrictions:	For Research Use only

Handling

Format:	Liquid
Concentration:	Lot specific
Buffer:	Liquid. Purified antibody supplied in 1x PBS buffer with 0.09 % (w/v) sodium azide and 2 % sucrose.
Preservative:	Sodium azide
Precaution of Use:	This product contains Sodium azide: a POISONOUS AND HAZARDOUS SUBSTANCE which should be handled by trained staff only.
Handling Advice:	Avoid repeated freeze-thaw cycles.
Storage:	-20 °C
Storage Comment:	For short term use, store at 2-8°C up to 1 week. For long term storage, store at -20°C in small aliquots to prevent freeze-thaw cycles.

MTX1



Western Blotting

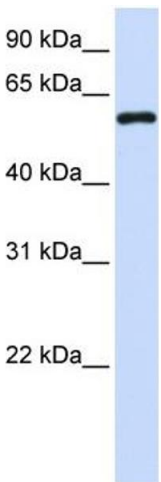
Image 1. Host: Rabbit Target Name: MTX1 Sample Type: Human Adult Placenta Antibody Dilution: 1.0ug/ml

MTX1



Western Blotting

Image 2. Host: Rabbit Target Name: MTX1 Sample Type: Human Fetal Lung Antibody Dilution: 1.0ug/ml



Western Blotting

Image 3. WB Suggested Anti-MTX1 Antibody Titration: 0.2-1 ug/ml ELISA Titer: 1:62500 Positive Control: Human brain

Please check the [product details page](#) for more images. Overall 5 images are available for ABIN2782175.