



Datasheet for ABIN2782178
anti-OMG antibody (N-Term)



[Go to Product page](#)

2 Images

Overview

Quantity:	100 µL
Target:	OMG
Binding Specificity:	N-Term
Reactivity:	Human, Mouse, Rat, Cow, Guinea Pig, Horse, Dog, Rabbit
Host:	Rabbit
Clonality:	Polyclonal
Conjugate:	This OMG antibody is un-conjugated
Application:	Western Blotting (WB)

Product Details

Immunogen:	The immunogen is a synthetic peptide directed towards the N terminal region of human OMG
Sequence:	ANNNIKLLDK SDTAYQWNLK YLDVSKNMLE KVVLIKNTLR SLEVLNLSSN
Predicted Reactivity:	Cow: 93%, Dog: 100%, Guinea Pig: 100%, Horse: 100%, Human: 100%, Mouse: 100%, Rabbit: 100%, Rat: 100%
Characteristics:	This is a rabbit polyclonal antibody against OMG. It was validated on Western Blot.
Purification:	Affinity Purified

Target Details

Target:	OMG
Alternative Name:	OMG (OMG Products)

Target Details

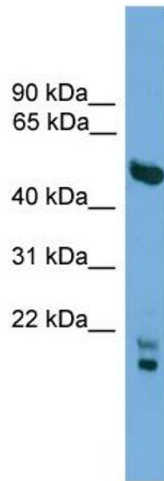
Background:	OMG is a cell adhesion molecule contributing to the interactive process required for myelination in the central nervous system. Alias Symbols: OMGP Protein Interaction Partner: RTN4RL1, RTN4R, Protein Size: 440
Molecular Weight:	49 kDa
Gene ID:	4974
NCBI Accession:	NM_002544 , NP_002535
UniProt:	P23515
Pathways:	Neurotrophin Signaling Pathway , Regulation of Cell Size

Application Details

Application Notes:	Optimal working dilutions should be determined experimentally by the investigator.
Comment:	Antigen size: 440 AA
Restrictions:	For Research Use only

Handling

Format:	Liquid
Concentration:	Lot specific
Buffer:	Liquid. Purified antibody supplied in 1x PBS buffer with 0.09 % (w/v) sodium azide and 2 % sucrose.
Preservative:	Sodium azide
Precaution of Use:	This product contains Sodium azide: a POISONOUS AND HAZARDOUS SUBSTANCE which should be handled by trained staff only.
Handling Advice:	Avoid repeated freeze-thaw cycles.
Storage:	-20 °C
Storage Comment:	For short term use, store at 2-8°C up to 1 week. For long term storage, store at -20°C in small aliquots to prevent freeze-thaw cycles.



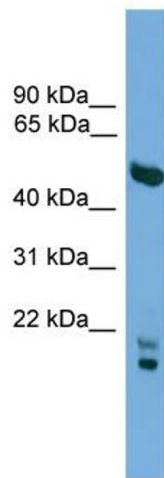
Western Blotting

Image 1. WB Suggested Anti-OMG

Antibody Titration: 0.2-1 µg/mL

Positive Control: HepG2 cell lysate

OMG is supported by BioGPS gene expression data to be expressed in HepG2



Western Blotting

Image 2. WB Suggested Anti-OMG Antibody Titration: 0.2-1

ug/ml Positive Control: HepG2 cell lysate OMG is supported

by BioGPS gene expression data to be expressed in HepG2