

Datasheet for ABIN2782181

**anti-Protocadherin 1 antibody (N-Term)**

3 Images

[Go to Product page](#)

## Overview

Quantity:	100 µL
Target:	Protocadherin 1 (PCDH1)
Binding Specificity:	N-Term
Reactivity:	Human, Mouse, Rat, Dog, Horse, Rabbit, Cow, Guinea Pig, Pig, Zebrafish (Danio rerio)
Host:	Rabbit
Clonality:	Polyclonal
Conjugate:	This Protocadherin 1 antibody is un-conjugated
Application:	Western Blotting (WB), Immunocytochemistry (ICC)

## Product Details

Immunogen:	The immunogen is a synthetic peptide directed towards the N terminal region of human PCDH1
Sequence:	LLPSMLLALL LLLAPSPGHA TRVVYKVPEE QPPNTLIGSL AADYGFPDVG
Predicted Reactivity:	Cow: 93%, Dog: 100%, Guinea Pig: 93%, Horse: 100%, Human: 100%, Mouse: 100%, Pig: 100%, Rabbit: 100%, Rat: 100%, Zebrafish: 92%
Characteristics:	This is a rabbit polyclonal antibody against PCDH1. It was validated on Western Blot using a cell lysate as a positive control.
Purification:	Affinity Purified

## Target Details

Target:	Protocadherin 1 (PCDH1)
---------	-------------------------

## Target Details

Alternative Name:	PCDH1 ( <a href="#">PCDH1 Products</a> )
Background:	<p>PCDH1 belongs to the protocadherin subfamily within the cadherin superfamily. It is a membrane protein found at cell-cell boundaries. It is involved in neural cell adhesion, suggesting a possible role in neuronal development. The protein includes an extracellular region, containing 7 cadherin-like domains, a transmembrane region and a C-terminal cytoplasmic region. Cells expressing the protein showed cell aggregation activity. This gene belongs to the protocadherin subfamily within the cadherin superfamily. The encoded protein is a membrane protein found at cell-cell boundaries. It is involved in neural cell adhesion, suggesting a possible role in neuronal development. The protein includes an extracellular region, containing 7 cadherin-like domains, a transmembrane region and a C-terminal cytoplasmic region. Cells expressing the protein showed cell aggregation activity. Alternative splicing occurs in this gene.</p> <p>Alias Symbols: MGC45991, PC42, PCDH42</p> <p>Protein Interaction Partner: UBC, SMAD3, ALB, VKORC1, ATF7IP,</p> <p>Protein Size: 1060</p>
Molecular Weight:	111 kDa
Gene ID:	5097
NCBI Accession:	<a href="#">NM_002587</a> , <a href="#">NP_002578</a>
UniProt:	<a href="#">Q08174</a>

## Application Details

Application Notes:	Optimal working dilutions should be determined experimentally by the investigator.
Comment:	Antigen size: 1060 AA
Restrictions:	For Research Use only

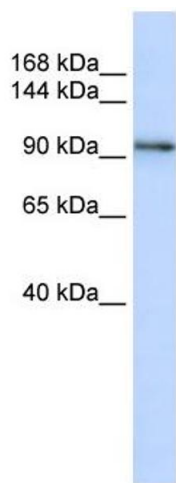
## Handling

Format:	Liquid
Concentration:	Lot specific
Buffer:	Liquid. Purified antibody supplied in 1x PBS buffer with 0.09 % (w/v) sodium azide and 2 % sucrose.
Preservative:	Sodium azide

Handling

Precaution of Use:	This product contains Sodium azide: a POISONOUS AND HAZARDOUS SUBSTANCE which should be handled by trained staff only.
Handling Advice:	Avoid repeated freeze-thaw cycles.
Storage:	-20 °C
Storage Comment:	For short term use, store at 2-8°C up to 1 week. For long term storage, store at -20°C in small aliquots to prevent freeze-thaw cycles.

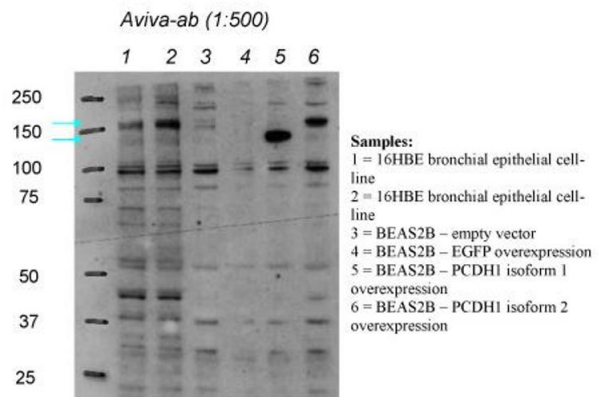
Images



Western Blotting

**Image 1.** WB Suggested Anti-PCDH1 Antibody Titration: 0.2-1 ug/ml ELISA Titer: 1:312500 Positive Control: MCF7 cell lysate

Detection of endogenous PCDH1(ARP45331) (16HBE bronchial epithelial cell-line) and overexpressed PCDH1 (BEAS2B bronchial epithelial cell-line) by western blotting:

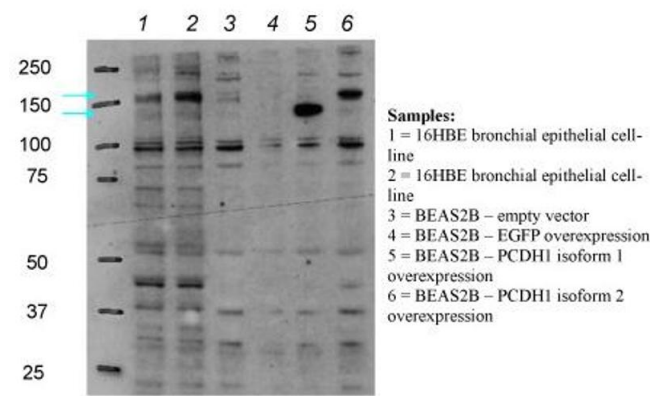


**Image 2.**

Application data in forum

Western Blotting

**Image 3.** PCDH1 antibody - N-terminal region validated by WB using bronchial epithelial cell line (16HBE)



Application data in forum