

Datasheet for ABIN2782183

anti-Protocadherin gamma Subfamily C, 3 (PCDHGC3) (C-Term) antibody[Go to Product page](#)**3** Images

Overview

Quantity:	100 µL
Target:	Protocadherin gamma Subfamily C, 3 (PCDHGC3)
Binding Specificity:	C-Term
Reactivity:	Human, Mouse, Rat, Guinea Pig, Horse, Cow
Host:	Rabbit
Clonality:	Polyclonal
Conjugate:	Un-conjugated
Application:	Western Blotting (WB)

Product Details

Immunogen:	The immunogen is a synthetic peptide directed towards the C terminal region of human PCDHGC3
Sequence:	IKDNGEPSLS TTATLTVSVT EDSPEARAEF PSGSAPREQK KNLTFYLLLS
Predicted Reactivity:	Cow: 92%, Guinea Pig: 85%, Horse: 100%, Human: 100%, Mouse: 100%, Rat: 100%
Characteristics:	This is a rabbit polyclonal antibody against PCDHGC3. It was validated on Western Blot using a cell lysate as a positive control.
Purification:	Affinity Purified

Target Details

Target:	Protocadherin gamma Subfamily C, 3 (PCDHGC3)
---------	----------------------------------------------

Target Details

Alternative Name: PCDHGC3 ([PCDHGC3 Products](#))

Background: This gene is a member of the protocadherin gamma gene cluster, one of three related clusters tandemly linked on chromosome five. These gene clusters have an immunoglobulin-like organization, suggesting that a novel mechanism may be involved in their regulation and expression. PCDHGC3 is a potential calcium-dependent cell-adhesion protein. It may be involved in the establishment and maintenance of specific neuronal connections in the brain. This gene is a member of the protocadherin gamma gene cluster, one of three related clusters tandemly linked on chromosome five. These gene clusters have an immunoglobulin-like organization, suggesting that a novel mechanism may be involved in their regulation and expression. The gamma gene cluster includes 22 genes divided into 3 subfamilies. Subfamily A contains 12 genes, subfamily B contains 7 genes and 2 pseudogenes, and the more distantly related subfamily C contains 3 genes. The tandem array of 22 large, variable region exons are followed by a constant region, containing 3 exons shared by all genes in the cluster. Each variable region exon encodes the extracellular region, which includes 6 cadherin ectodomains and a transmembrane region. The constant region exons encode the common cytoplasmic region. These neural cadherin-like cell adhesion proteins most likely play a critical role in the establishment and function of specific cell-cell connections in the brain. Alternative splicing has been described for the gamma cluster genes.

Alias Symbols: PC43, PCDH-GAMMA-C3, PCDH2

Protein Interaction Partner: UBC, MFSD3, HGD, APP,

Protein Size: 934

Molecular Weight: 98 kDa

Gene ID: 5098

NCBI Accession: [NM_002588](#), [NP_002579](#)

UniProt: [Q9UN70](#)

Application Details

Application Notes: Optimal working dilutions should be determined experimentally by the investigator.

Comment: Antigen size: 934 AA

Restrictions: For Research Use only

Handling

Format:	Liquid
Concentration:	Lot specific
Buffer:	Liquid. Purified antibody supplied in 1x PBS buffer with 0.09 % (w/v) sodium azide and 2 % sucrose.
Preservative:	Sodium azide
Precaution of Use:	This product contains Sodium azide: a POISONOUS AND HAZARDOUS SUBSTANCE which should be handled by trained staff only.
Handling Advice:	Avoid repeated freeze-thaw cycles.
Storage:	-20 °C
Storage Comment:	For short term use, store at 2-8°C up to 1 week. For long term storage, store at -20°C in small aliquots to prevent freeze-thaw cycles.

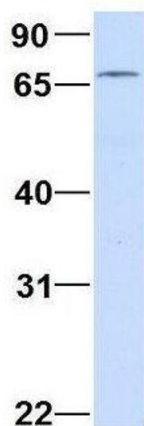
Images



Western Blotting

Image 1. WB Suggested Anti-PCDHGC3 Antibody Titration: 0.2-1 ug/ml ELISA Titer: 1:312500 Positive Control: 721_B cell lysate There is BioGPS gene expression data showing that PCDHGC3 is expressed in 721_B

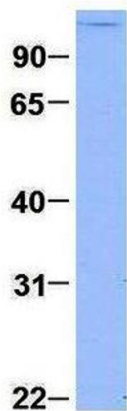
PCDHGC3



Western Blotting

Image 2. Host: Rabbit Target Name: CHAD Sample Type: Human Adult Placenta Antibody Dilution: 1.0ug/ml

PCDHGC3



Western Blotting

Image 3. Host: Rabbit Target Name: PCDHGC3 Sample Type: 293T Antibody Dilution: 1.0ug/ml