

Datasheet for ABIN2782190
anti-PPP1R3A antibody (N-Term)



[Go to Product page](#)

1 Image

Overview

Quantity:	100 µL
Target:	PPP1R3A
Binding Specificity:	N-Term
Reactivity:	Human, Mouse, Rat, Dog, Guinea Pig, Horse, Rabbit, Cow, Pig
Host:	Rabbit
Clonality:	Polyclonal
Conjugate:	This PPP1R3A antibody is un-conjugated
Application:	Western Blotting (WB)

Product Details

Immunogen:	The immunogen is a synthetic peptide directed towards the N terminal region of human PPP1R3A
Sequence:	MEPSEVPSQI SKDNFLEVPN LSDSLCEDEE VTFQPGFSPQ PSRRGSDSSE
Predicted Reactivity:	Cow: 93%, Dog: 100%, Guinea Pig: 86%, Horse: 100%, Human: 100%, Mouse: 100%, Pig: 100%, Rabbit: 100%, Rat: 100%
Characteristics:	This is a rabbit polyclonal antibody against PPP1R3A. It was validated on Western Blot using a cell lysate as a positive control.
Purification:	Affinity Purified

Target Details

Target:	PPP1R3A
---------	---------

Target Details

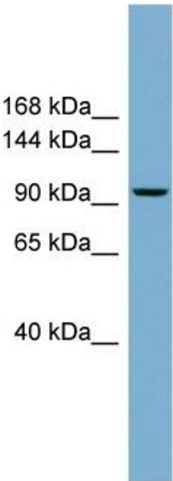
Alternative Name:	PPP1R3A (PPP1R3A Products)
Background:	<p>The glycogen-associated form of protein phosphatase-1 (PP1) derived from skeletal muscle is a heterodimer composed of a 37-kD catalytic subunit and a 124-kD targeting and regulatory subunit. This gene encodes the regulatory subunit which binds to muscle g</p> <p>Alias Symbols: PP1G, PPP1R3, GM</p> <p>Protein Interaction Partner: BRCA1, RPS6KA1, PPP1R3A, PLN,</p> <p>Protein Size: 1122</p>
Molecular Weight:	126 kDa
Gene ID:	5506
NCBI Accession:	NM_002711 , NP_002702
UniProt:	Q16821
Pathways:	Cellular Glucan Metabolic Process

Application Details

Application Notes:	Optimal working dilutions should be determined experimentally by the investigator.
Comment:	Antigen size: 1122 AA
Restrictions:	For Research Use only

Handling

Format:	Liquid
Concentration:	Lot specific
Buffer:	Liquid. Purified antibody supplied in 1x PBS buffer with 0.09 % (w/v) sodium azide and 2 % sucrose.
Preservative:	Sodium azide
Precaution of Use:	This product contains Sodium azide: a POISONOUS AND HAZARDOUS SUBSTANCE which should be handled by trained staff only.
Handling Advice:	Avoid repeated freeze-thaw cycles.
Storage:	-20 °C
Storage Comment:	For short term use, store at 2-8°C up to 1 week. For long term storage, store at -20°C in small aliquots to prevent freeze-thaw cycles.



Western Blotting

Image 1. WB Suggested Anti-PPP1R3A Antibody Titration:
0.2-1 ug/ml Positive Control: THP-1 cell lysate