

Datasheet for ABIN2782197  
**anti-PTPRN antibody (Middle Region)**[Go to Product page](#)

## 3 Images

## Overview

Quantity:	100 µL
Target:	PTPRN
Binding Specificity:	Middle Region
Reactivity:	Human, Rat, Mouse, Pig, Cow, Rabbit, Guinea Pig, Dog, Horse
Host:	Rabbit
Clonality:	Polyclonal
Conjugate:	This PTPRN antibody is un-conjugated
Application:	Western Blotting (WB)

## Product Details

Immunogen:	The immunogen is a synthetic peptide directed towards the middle region of human PTPRN
Sequence:	EVQQVPSPVS SEPPKAARPP VTPVLLEKKS PLGQSQPTVA GQPSARPAAE
Predicted Reactivity:	Cow: 86%, Dog: 100%, Guinea Pig: 85%, Horse: 93%, Human: 100%, Mouse: 100%, Pig: 86%, Rabbit: 100%, Rat: 100%
Characteristics:	This is a rabbit polyclonal antibody against PTPRN. It was validated on Western Blot using a cell lysate as a positive control.
Purification:	Affinity Purified

## Target Details

Target:	PTPRN
---------	-------

## Target Details

Alternative Name:	PTPRN ( <a href="#">PTPRN Products</a> )
Background:	<p>PTPRN is a member of the protein tyrosine phosphatase (PTP) family. PTPs are known to be signaling molecules that regulate a variety of cellular processes including cell growth, differentiation, mitotic cycle, and oncogenic transformation. This PTP possesses an extracellular region, a single transmembrane region, and a single catalytic domain, and thus represents a receptor-type PTP. This PTP was found to be an autoantigen that is reactive with insulin-dependent diabetes mellitus (IDDM) patient sera, and thus may be a potential target of autoimmunity in diabetes mellitus.</p> <p>Alias Symbols: FLJ16131, IA-2, IA-2/PTP, IA2, ICA512, R-PTP-N</p> <p>Protein Interaction Partner: PLP1, MAL, CLN8, UBQLN4, SNX19, SPTBN4, PTPRT, MADD, PTPRS, SNTB2, NOS1, PPIA, CAPN2,</p> <p>Protein Size: 889</p>
Molecular Weight:	96 kDa
Gene ID:	5798
NCBI Accession:	<a href="#">NM_001199763</a>
UniProt:	<a href="#">Q16849</a>

## Application Details

Application Notes:	Optimal working dilutions should be determined experimentally by the investigator.
Comment:	Antigen size: 591 AA
Restrictions:	For Research Use only

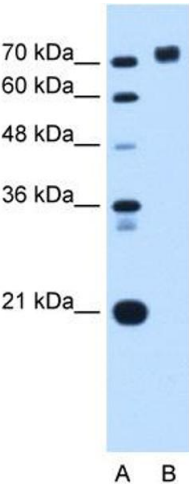
## Handling

Format:	Liquid
Concentration:	Lot specific
Buffer:	Liquid. Purified antibody supplied in 1x PBS buffer with 0.09 % (w/v) sodium azide and 2 % sucrose.
Preservative:	Sodium azide
Precaution of Use:	This product contains Sodium azide: a POISONOUS AND HAZARDOUS SUBSTANCE which should be handled by trained staff only.
Handling Advice:	Avoid repeated freeze-thaw cycles.

Handling

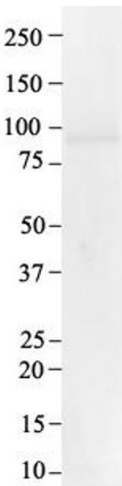
Storage:	-20 °C
Storage Comment:	For short term use, store at 2-8°C up to 1 week. For long term storage, store at -20°C in small aliquots to prevent freeze-thaw cycles.

Images



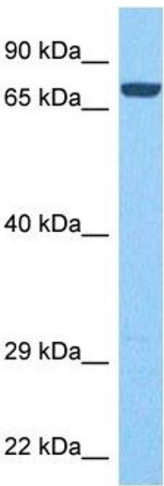
Western Blotting

**Image 1.** WB Suggested Anti-PTPRN Antibody Titration:  
0.0625ug/ml Positive Control: HepG2 cell lysate



Western Blotting

**Image 2.** Host: Rabbit Target Name: PTPRN Sample Type:  
Human Kidney Antibody Dilution: 0.5 ug/ml



Western Blotting

**Image 3.** Host: Rabbit Target Name: PTPRN Sample Tissue:  
Human Liver Tumor Antibody Dilution: 1ug/ml