

Datasheet for ABIN2782203

**anti-Ribophorin II antibody (N-Term)**

5 Images

1 Publication

[Go to Product page](#)

## Overview

Quantity:	100 µL
Target:	Ribophorin II (RPN2)
Binding Specificity:	N-Term
Reactivity:	Human, Mouse, Rat, Dog, Horse, Cow, Pig, Rabbit
Host:	Rabbit
Clonality:	Polyclonal
Conjugate:	This Ribophorin II antibody is un-conjugated
Application:	Western Blotting (WB), Immunohistochemistry (IHC)

## Product Details

Immunogen:	The immunogen is a synthetic peptide directed towards the N terminal region of human RPN2
Sequence:	ASQEALSALT ARLSKEETVL ATVQALQTAS HLSQQADLRS IVEEIEDLVA
Predicted Reactivity:	Cow: 93%, Dog: 100%, Horse: 100%, Human: 100%, Mouse: 100%, Pig: 93%, Rabbit: 100%, Rat: 100%
Characteristics:	This is a rabbit polyclonal antibody against RPN2. It was validated on Western Blot and immunohistochemistry.
Purification:	Affinity Purified

## Target Details

Target:	Ribophorin II (RPN2)
---------	----------------------

## Target Details

Alternative Name:	RPN2 ( <a href="#">RPN2 Products</a> )
Background:	<p>RPN2 is a type I integral membrane protein found only in the rough endoplasmic reticulum. The protein is part of an N-oligosaccharyl transferase complex that links high mannose oligosaccharides to asparagine residues found in the Asn-X-Ser/Thr consensus motif of nascent polypeptide chains. This gene encodes a type I integral membrane protein found only in the rough endoplasmic reticulum. The encoded protein is part of an N-oligosaccharyl transferase complex that links high mannose oligosaccharides to asparagine residues found in the Asn-X-Ser/Thr consensus motif of nascent polypeptide chains. This protein is similar in sequence to the yeast oligosaccharyl transferase subunit SWP1.</p> <p>Alias Symbols: RIBIIR, RPN-II, RPNII, SWP1</p> <p>Protein Interaction Partner: UBC, FUS, FAF1, VAPB, EED, ADRB2, CLN3, MMS19, RCHY1, UBL4A, ESR1, RHOA, RPN1, ILF3, PDIA3, CANX, ATP5A1, STT3B, TM9SF2, FBXO6, CUL3, FBXO25, SIRT7, TCF3, AUP1, ARRB2, NDRG1, SUMO2, FBN3, RBBP4, NGFR, HDAC5, MYC, RNF185, H2AFX, BRE, ADRM1, EZH2, GSTK1, TM</p> <p>Protein Size: 631</p>
Molecular Weight:	69 kDa
Gene ID:	6185
NCBI Accession:	<a href="#">NM_002951</a> , <a href="#">NP_002942</a>
UniProt:	<a href="#">P04844</a>

## Application Details

Application Notes:	Optimal working dilutions should be determined experimentally by the investigator.
Comment:	Antigen size: 631 AA
Restrictions:	For Research Use only

## Handling

Format:	Liquid
Concentration:	Lot specific
Buffer:	Liquid. Purified antibody supplied in 1x PBS buffer with 0.09 % (w/v) sodium azide and 2 % sucrose.
Preservative:	Sodium azide

## Handling

Precaution of Use:	This product contains Sodium azide: a POISONOUS AND HAZARDOUS SUBSTANCE which should be handled by trained staff only.
Handling Advice:	Avoid repeated freeze-thaw cycles.
Storage:	-20 °C
Storage Comment:	For short term use, store at 2-8°C up to 1 week. For long term storage, store at -20°C in small aliquots to prevent freeze-thaw cycles.

## Publications

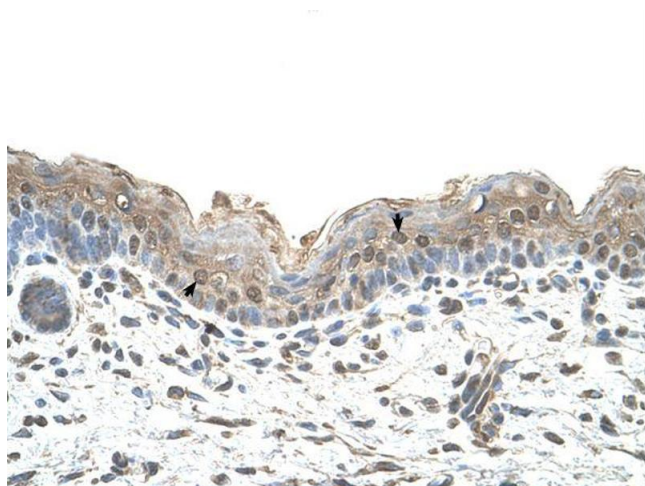
Product cited in:	Crawford, Qian, Ziogas, Papageorge, Boersma, Walker, Lukes, Rowe, Zhang, Ambs, Lowy, Anton-Culver, Hunter: "Rrp1b, a new candidate susceptibility gene for breast cancer progression and metastasis." in: <b>PLoS genetics</b> , Vol. 3, Issue 11, pp. e214, (2007) ( <a href="#">PubMed</a> ).
-------------------	---

## Images



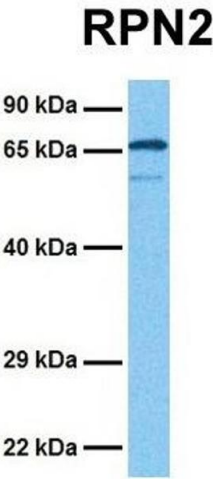
### Western Blotting

**Image 1.** WB Suggested Anti-RPN2 Antibody Titration: 0.25ug/ml Positive Control: HepG2 cell lysate RPN2 is strongly supported by BioGPS gene expression data to be expressed in Human HepG2 cells



### Immunohistochemistry

**Image 2.**



**Western Blotting**

**Image 3.** Host: Rabbit Target Name: RPN2 Sample Tissue:  
Human Fetal Liver Antibody Dilution: 1.0ug/ml

Please check the [product details page](#) for more images. Overall 5 images are available for ABIN2782203.