

Datasheet for ABIN2782209  
**anti-SMPD2 antibody (N-Term)**[Go to Product page](#)

1 Image

1 Publication

## Overview

Quantity:	100 µL
Target:	SMPD2
Binding Specificity:	N-Term
Reactivity:	Human, Rat, Mouse, Dog, Cow, Horse, Guinea Pig, Rabbit
Host:	Rabbit
Clonality:	Polyclonal
Conjugate:	This SMPD2 antibody is un-conjugated
Application:	Western Blotting (WB)

## Product Details

Immunogen:	The immunogen is a synthetic peptide directed towards the N terminal region of human SMPD2
Sequence:	RQKLSPTYPA AHHFRSGIIG SGLCVFSKHP IQELTQHIYT LNGYPYMIHH
Predicted Reactivity:	Cow: 79%, Dog: 86%, Guinea Pig: 79%, Horse: 86%, Human: 100%, Mouse: 77%, Rabbit: 79%, Rat: 79%
Characteristics:	This is a rabbit polyclonal antibody against SMPD2. It was validated on Western Blot using a cell lysate as a positive control.
Purification:	Protein A purified

## Target Details

Target:	SMPD2
---------	-------

## Target Details

Alternative Name:	SMPD2 ( <a href="#">SMPD2 Products</a> )
Background:	<p>SMPD2 converts sphingomyelin to ceramide. Hydrolyze 1-acyl-2-lyso-sn-glycero-3-phosphocholine (lyso-PC) and 1-O-alkyl-2-lyso-sn-glycero-3-phosphocholine (lyso-platelet-activating factor). The physiological substrate seems to be Lyso-PAF.</p> <p>Alias Symbols: NSMASE, ISC1, NSMASE1</p> <p>Protein Interaction Partner: UBC, PIK3CG,</p> <p>Protein Size: 423</p>
Molecular Weight:	48 kDa
Gene ID:	6610
NCBI Accession:	<a href="#">NM_003080</a> , <a href="#">NP_003071</a>
UniProt:	<a href="#">O60906</a>
Pathways:	<a href="#">Neurotrophin Signaling Pathway</a>

## Application Details

Application Notes:	Optimal working dilutions should be determined experimentally by the investigator.
Comment:	Antigen size: 423 AA
Restrictions:	For Research Use only

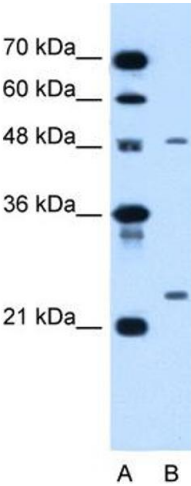
## Handling

Format:	Liquid
Concentration:	Lot specific
Buffer:	Liquid. Purified antibody supplied in 1x PBS buffer with 0.09 % (w/v) sodium azide and 2 % sucrose.
Preservative:	Sodium azide
Precaution of Use:	This product contains Sodium azide: a POISONOUS AND HAZARDOUS SUBSTANCE which should be handled by trained staff only.
Handling Advice:	Avoid repeated freeze-thaw cycles.
Storage:	-20 °C
Storage Comment:	For short term use, store at 2-8°C up to 1 week. For long term storage, store at -20°C in small aliquots to prevent freeze-thaw cycles.

Publications

Product cited in: Spellman, Ahmed, Dubach, Gardiner: "Expression of trisomic proteins in Down syndrome model systems." in: **Gene**, Vol. 512, Issue 2, pp. 219-25, (2012) ([PubMed](#)).

Images



**Western Blotting**

**Image 1.** WB Suggested Anti-SMPD2 Antibody Titration:  
1.25ug/ml Positive Control: HepG2 cell lysate