

Datasheet for ABIN2782210
anti-SOAT1 antibody (Middle Region)[Go to Product page](#)

2 Images

Overview

Quantity:	100 µL
Target:	SOAT1
Binding Specificity:	Middle Region
Reactivity:	Human, Rat, Mouse, Cow, Dog, Rabbit, Guinea Pig, Horse, Pig
Host:	Rabbit
Clonality:	Polyclonal
Conjugate:	This SOAT1 antibody is un-conjugated
Application:	Western Blotting (WB)

Product Details

Immunogen:	The immunogen is a synthetic peptide directed towards the middle region of human SOAT1
Sequence:	ASRFIIIFEQ IRFVMKAHSF VRENVPRVLN SAKEKSSTVP IPTVNQYLYF
Predicted Reactivity:	Cow: 100%, Dog: 100%, Guinea Pig: 93%, Horse: 93%, Human: 100%, Mouse: 86%, Pig: 100%, Rabbit: 100%, Rat: 86%
Characteristics:	This is a rabbit polyclonal antibody against SOAT1. It was validated on Western Blot.
Purification:	Affinity Purified

Target Details

Target:	SOAT1
Alternative Name:	SOAT1 (SOAT1 Products)

Target Details

Background:	<p>Acyl-coenzyme A:cholesterol acyltransferase (ACACT, EC 2.3.1.26) is an intracellular protein located in the endoplasmic reticulum that forms cholesterol esters from cholesterol.</p> <p>Accumulation of cholesterol esters as cytoplasmic lipid droplets within macrophages and smooth muscle cells is a characteristic feature of the early stages of atherosclerotic plaques (Cadigan et al., 1988 [PubMed 3335499]).</p> <p>Alias Symbols: ACACT, ACAT, ACAT1, RP11-215I23.2, SOAT, STAT</p> <p>Protein Interaction Partner: UBC, ILF2, SLC25A10, TERF1,</p> <p>Protein Size: 550</p>
-------------	--

Molecular Weight:	65 kDa
-------------------	--------

Gene ID:	6646
----------	------

NCBI Accession:	NM_003101 , NP_003092
-----------------	---

UniProt:	P35610
----------	------------------------

Application Details

Application Notes:	Optimal working dilutions should be determined experimentally by the investigator.
--------------------	--

Comment:	Antigen size: 550 AA
----------	----------------------

Restrictions:	For Research Use only
---------------	-----------------------

Handling

Format:	Liquid
---------	--------

Concentration:	Lot specific
----------------	--------------

Buffer:	Liquid. Purified antibody supplied in 1x PBS buffer with 0.09 % (w/v) sodium azide and 2 % sucrose.
---------	---

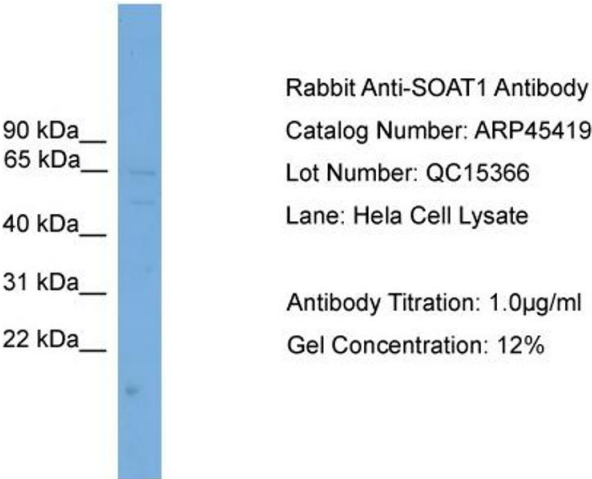
Preservative:	Sodium azide
---------------	--------------

Precaution of Use:	This product contains Sodium azide: a POISONOUS AND HAZARDOUS SUBSTANCE which should be handled by trained staff only.
--------------------	--

Handling Advice:	Avoid repeated freeze-thaw cycles.
------------------	------------------------------------

Storage:	-20 °C
----------	--------

Storage Comment:	For short term use, store at 2-8°C up to 1 week. For long term storage, store at -20°C in small aliquots to prevent freeze-thaw cycles.
------------------	---



Western Blotting

Image 1. WB Suggested Anti-SOAT1

Antibody Titration: 0.2-1 µg/mL ELISA Titer: 1:12500

Positive Control: Hela cell lysate



Western Blotting

Image 2. WB Suggested Anti-SOAT1 Antibody Titration: 0.2-1 µg/ml ELISA Titer: 1:12500 Positive Control: Hela cell lysate