

Datasheet for ABIN2782216

**anti-Synaptophysin antibody (N-Term)**

4 Images

1 Publication

[Go to Product page](#)

## Overview

Quantity:	100 µL
Target:	Synaptophysin (SYP)
Binding Specificity:	N-Term
Reactivity:	Human, Rat, Mouse, Cow, Dog, Guinea Pig, Horse, Zebrafish (Danio rerio), Goat
Host:	Rabbit
Clonality:	Polyclonal
Conjugate:	This Synaptophysin antibody is un-conjugated
Application:	Western Blotting (WB), Immunohistochemistry (IHC)

## Product Details

Immunogen:	The immunogen is a synthetic peptide directed towards the N terminal region of human SYP
Sequence:	MLLLADMDVV NQLVAGGQFR VVKEPLGFVK VLQWVFAIFA FATCGSYSGE
Predicted Reactivity:	Cow: 100%, Dog: 92%, Goat: 100%, Guinea Pig: 100%, Horse: 100%, Human: 100%, Mouse: 100%, Rat: 100%, Zebrafish: 85%
Characteristics:	This is a rabbit polyclonal antibody against SYP. It was validated on Western Blot using a cell lysate as a positive control.
Purification:	Affinity Purified

## Target Details

Target:	Synaptophysin (SYP)
---------	---------------------

## Target Details

Alternative Name:	SYP ( <a href="#">SYP Products</a> )
Background:	<p>Synaptophysin (p38) is an integral membrane protein of small synaptic vesicles in brain and endocrine cells. Synaptophysin (p38) is an integral membrane protein of small synaptic vesicles in brain and endocrine cells.[supplied by OMIM]. Publication Note: This RefSeq record includes a subset of the publications that are available for this gene. Please see the Entrez Gene record to access additional publications.</p> <p>Alias Symbols: MRXSYN</p> <p>Protein Interaction Partner: UBC, SRCIN1, SORBS3, Htt, AP1G1, SIAH2, SIAH1, VAMP2, GRB2, STX1A, EPOR,</p> <p>Protein Size: 313</p>
Molecular Weight:	34 kDa
Gene ID:	6855
NCBI Accession:	<a href="#">NM_003179</a> , <a href="#">NP_003170</a>
UniProt:	<a href="#">B2R7L6</a>
Pathways:	<a href="#">Regulation of G-Protein Coupled Receptor Protein Signaling</a> , <a href="#">Regulation of long-term Neuronal Synaptic Plasticity</a>

## Application Details

Application Notes:	Optimal working dilutions should be determined experimentally by the investigator.
Comment:	Antigen size: 313 AA
Restrictions:	For Research Use only

## Handling

Format:	Liquid
Concentration:	Lot specific
Buffer:	Liquid. Purified antibody supplied in 1x PBS buffer with 0.09 % (w/v) sodium azide and 2 % sucrose.
Preservative:	Sodium azide
Precaution of Use:	This product contains Sodium azide: a POISONOUS AND HAZARDOUS SUBSTANCE which should be handled by trained staff only.

## Handling

Handling Advice:	Avoid repeated freeze-thaw cycles.
Storage:	-20 °C
Storage Comment:	For short term use, store at 2-8°C up to 1 week. For long term storage, store at -20°C in small aliquots to prevent freeze-thaw cycles.

## Publications

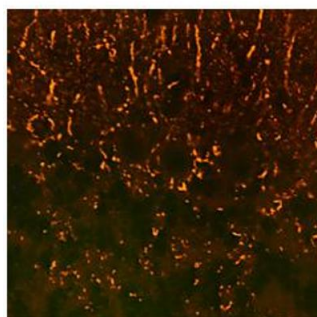
Product cited in:	Spellman, Ahmed, Dubach, Gardiner: "Expression of trisomic proteins in Down syndrome model systems." in: <b>Gene</b> , Vol. 512, Issue 2, pp. 219-25, (2012) ( <a href="#">PubMed</a> ).
-------------------	------------------------------------------------------------------------------------------------------------------------------------------------------------------------------------------

## Images



### Western Blotting

**Image 1.** WB Suggested Anti-SYP Antibody Titration: 0.2-1 ug/ml ELISA Titer: 1:62500 Positive Control: Transfected 293T



### SYP (ARP45435\_P050)

Immunohistochemistry

Sample: rat and mouse

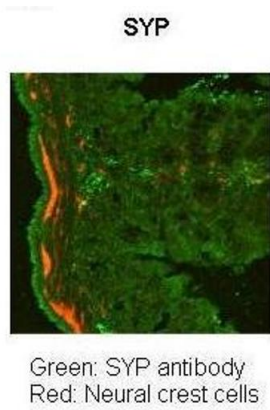
Tissue type: Brain Tissue

Dilution: 10ug/ml

Observed: staining in synaptic puncta in many parts of brain

Application in forum

### Image 2.



Immunohistochemistry			
Image	3.	Application:	Immunohistochemistry
Species+tissue/cell type: Mouse Gut Tissue TgWnt1-Cre/+ Ednrbflex3/+ Rosa26YFPStop/YFPStop			
How many ug's of tissue/cell lysate run on the gel: 11 m			
Mouse Gut Tissue			
Primary antibody dilution: 1:50			
Secondary antibody: Goat anti-rabbit-cy3			
Secondary antibody dilution: 1:1500			

See IHC 2 Data and Customer Feedback for more information

Please check the [product details page](#) for more images. Overall 4 images are available for ABIN2782216.