

Datasheet for ABIN2782217
anti-TAPBP antibody (N-Term)

3 Images

[Go to Product page](#)

Overview

Quantity:	100 µL
Target:	TAPBP
Binding Specificity:	N-Term
Reactivity:	Human, Mouse, Rat, Sheep, Pig, Horse, Dog, Rabbit
Host:	Rabbit
Clonality:	Polyclonal
Conjugate:	This TAPBP antibody is un-conjugated
Application:	Western Blotting (WB), Immunohistochemistry (IHC)

Product Details

Immunogen:	The immunogen is a synthetic peptide directed towards the N terminal region of human TAPBP
Sequence:	GKGLAKRPGA LLLRQGPGEPPRPDLDP ELYSVHDPAGALQAAFRRYPR
Predicted Reactivity:	Dog: 93%, Horse: 93%, Human: 100%, Mouse: 79%, Pig: 93%, Rabbit: 93%, Rat: 86%, Sheep: 79%
Characteristics:	This is a rabbit polyclonal antibody against TAPBP. It was validated on Western Blot.
Purification:	Affinity Purified

Target Details

Target:	TAPBP
Alternative Name:	TAPBP (TAPBP Products)
Background:	TAPBP is a transmembrane glycoprotein which mediates interaction between newly assembled

Target Details

major histocompatibility complex (MHC) class I molecules and the transporter associated with antigen processing (TAP), which is required for the transport of antigenic peptides across the endoplasmic reticulum membrane. This interaction is essential for optimal peptide loading on the MHC class I molecule. Up to four complexes of MHC class I and this protein may be bound to a single TAP molecule. This protein contains a C-terminal double-lysine motif (KKKAE) known to maintain membrane proteins in the endoplasmic reticulum.

Alias Symbols: NGS17, TAPA, TPN, TPSN

Protein Interaction Partner: UBC, PDIA3, Tap2, ELAVL1, US3, TAP1, B2M, COPG1, COPG2, COPB1, HLA-C, HLA-A, CALR,

Protein Size: 299

Molecular Weight: 30 kDa

Gene ID: 6892

NCBI Accession: [NM_172208](#), [NP_757345](#)

UniProt: [O15533](#)

Application Details

Application Notes: Optimal working dilutions should be determined experimentally by the investigator.

Comment: Antigen size: 299 AA

Restrictions: For Research Use only

Handling

Format: Liquid

Concentration: Lot specific

Buffer: Liquid. Purified antibody supplied in 1x PBS buffer with 0.09 % (w/v) sodium azide and 2 % sucrose.

Preservative: Sodium azide

Precaution of Use: This product contains Sodium azide: a POISONOUS AND HAZARDOUS SUBSTANCE which should be handled by trained staff only.

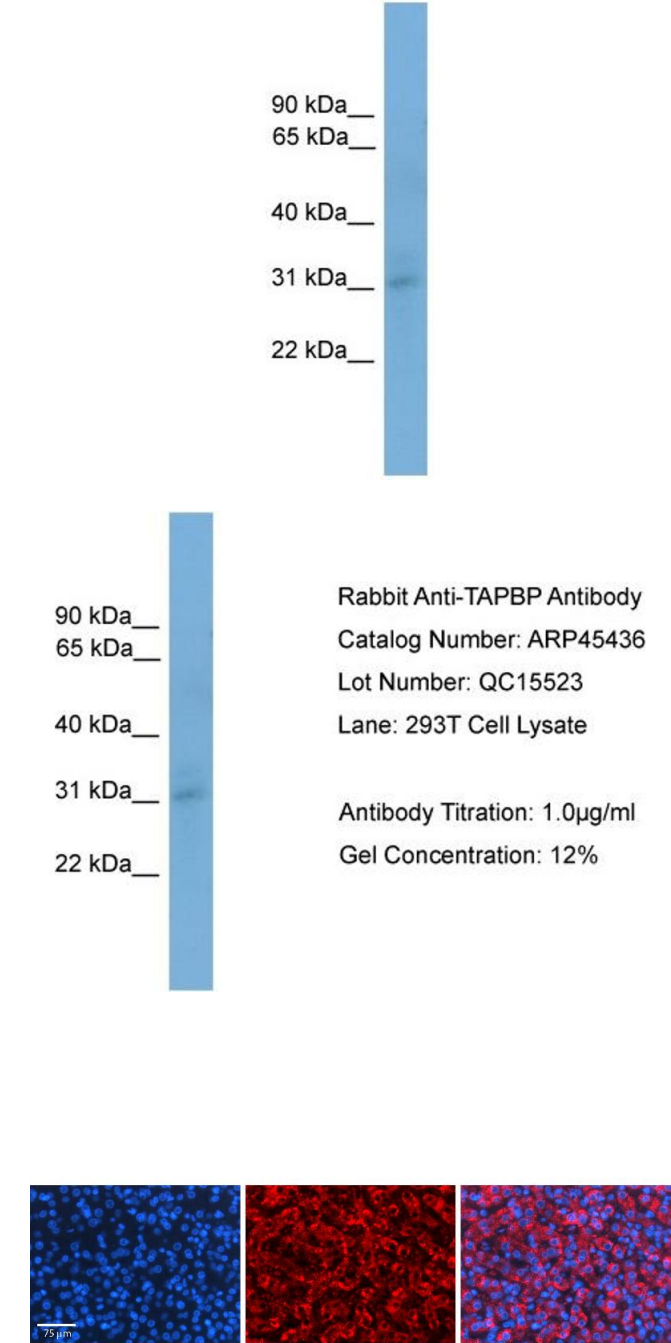
Handling Advice: Avoid repeated freeze-thaw cycles.

Storage: -20 °C

Handling

Storage Comment: For short term use, store at 2-8°C up to 1 week. For long term storage, store at -20°C in small aliquots to prevent freeze-thaw cycles.

Images



Western Blotting

Image 1. WB Suggested Anti-TAPBP Antibody Titration: 0.2-1 ug/ml Positive Control: 293T cell lysate

Western Blotting

Image 2. WB Suggested Anti-TAPBP Antibody Titration: 0.2-1 μg/mL Positive Control: 93T cell lysate

Immunohistochemistry

Image 3. Rabbit Anti-TAPBP Antibody Formalin Fixed Paraffin Embedded Tissue: Human Liver Tissue Observed Staining: Cytoplasm in hepatocytes Primary Antibody Concentration: 1:100 Other Working Concentrations: N/A Secondary Antibody: Donkey anti-Rabbit-Cy3 Secondary Antibody Concentration: 1:200 Magnification: 20X Exposure Time: 0.5 - 2.0 sec