



[Go to Product page](#)

Datasheet for ABIN2782231  
**anti-SCG2 antibody (N-Term)**

2 Images

Overview

Quantity:	100 µL
Target:	SCG2
Binding Specificity:	N-Term
Reactivity:	Human, Mouse, Rat, Rabbit, Cow, Horse, Pig, Dog, Guinea Pig
Host:	Rabbit
Clonality:	Polyclonal
Conjugate:	This SCG2 antibody is un-conjugated
Application:	Western Blotting (WB)

Product Details

Immunogen:	The immunogen is a synthetic peptide directed towards the N terminal region of human SCG2
Sequence:	KEESSPDYNP YQGVSVPLQQ KENGDESHLP ERDSLSEEDW MRIILEALRQ
Predicted Reactivity:	Cow: 100%, Dog: 93%, Guinea Pig: 93%, Horse: 100%, Human: 100%, Mouse: 100%, Pig: 100%, Rabbit: 100%, Rat: 93%
Characteristics:	This is a rabbit polyclonal antibody against SCG2. It was validated on Western Blot.
Purification:	Affinity Purified

Target Details

Target:	SCG2
Alternative Name:	SCG2 ( <a href="#">SCG2 Products</a> )

## Target Details

---

**Background:** The protein encoded by this gene is a member of the chromogranin/secretogranin family of neuroendocrine secretory proteins. Studies in rodents suggest that the full-length protein, secretogranin II, is involved in the packaging or sorting of peptide hormones and neuropeptides into secretory vesicles. The full-length protein is cleaved to produce the active peptide secretoneurin, which exerts chemotaxic effects on specific cell types, and EM66, whose function is unknown.

Alias Symbols: CHGC, SN, SgII

Protein Interaction Partner: ATRIP, TUBB4B, UBQLN4, COPS6, UBC,

Protein Size: 617

---

**Molecular Weight:** 71 kDa

---

**Gene ID:** 7857

---

**NCBI Accession:** [NM\\_003469](#), [NP\\_003460](#)

---

**UniProt:** [P13521](#)

---

## Application Details

---

**Application Notes:** Optimal working dilutions should be determined experimentally by the investigator.

---

**Comment:** Antigen size: 617 AA

---

**Restrictions:** For Research Use only

---

## Handling

---

**Format:** Liquid

---

**Concentration:** Lot specific

---

**Buffer:** Liquid. Purified antibody supplied in 1x PBS buffer with 0.09 % (w/v) sodium azide and 2 % sucrose.

---

**Preservative:** Sodium azide

---

**Precaution of Use:** This product contains Sodium azide: a POISONOUS AND HAZARDOUS SUBSTANCE which should be handled by trained staff only.

---

**Handling Advice:** Avoid repeated freeze-thaw cycles.

---

**Storage:** -20 °C

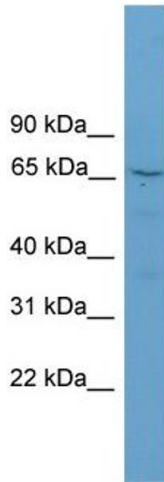
---

**Storage Comment:** For short term use, store at 2-8°C up to 1 week. For long term storage, store at -20°C in small

---

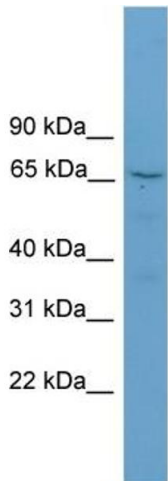
aliquots to prevent freeze-thaw cycles.

Images



**Western Blotting**

**Image 1.** WB Suggested Anti-SCG2 Antibody Titration: 0.2-1 ug/ml Positive Control: Jurkat cell lysate



Rabbit Anti-SCG2 Antibody  
Catalog Number: ARP45473  
Lot Number: QC15553  
Lane: Jurkat Cell Lysate

Antibody Titration: 1.0µg/ml  
Gel Concentration: 12%

**Western Blotting**

**Image 2.** WB Suggested Anti-SCG2 Antibody Titration: 0.2-1 µg/mL Positive Control: Jurkat cell lysate