



[Go to Product page](#)

Datasheet for ABIN2782233

anti-TMEM187 antibody (Middle Region)

2 Images

Overview

Quantity:	100 µL
Target:	TMEM187
Binding Specificity:	Middle Region
Reactivity:	Human, Dog, Horse, Rabbit
Host:	Rabbit
Clonality:	Polyclonal
Conjugate:	This TMEM187 antibody is un-conjugated
Application:	Western Blotting (WB)

Product Details

Immunogen:	The immunogen is a synthetic peptide directed towards the middle region of human TMEM187
Sequence:	ECVSLASYGL ALLHPQGFV ALGAHVVA AV GQALRTHRHY GSTTSATYLA
Predicted Reactivity:	Dog: 79%, Horse: 77%, Human: 100%, Rabbit: 86%
Characteristics:	This is a rabbit polyclonal antibody against TMEM187. It was validated on Western Blot using a cell lysate as a positive control.
Purification:	Affinity Purified

Target Details

Target:	TMEM187
Alternative Name:	TMEM187 (TMEM187 Products)

Target Details

Background: TMEM187 is a multi-pass membrane protein. The exact function of TMEM187 remains unknown.

Alias Symbols: CXorf12, DXS9878E, ITBA1

Protein Size: 261

Molecular Weight: 29 kDa

Gene ID: 8269

NCBI Accession: [NM_003492](#), [NP_003483](#)

UniProt: [Q14656](#)

Application Details

Application Notes: Optimal working dilutions should be determined experimentally by the investigator.

Comment: Antigen size: 261 AA

Restrictions: For Research Use only

Handling

Format: Liquid

Concentration: Lot specific

Buffer: Liquid. Purified antibody supplied in 1x PBS buffer with 0.09 % (w/v) sodium azide and 2 % sucrose.

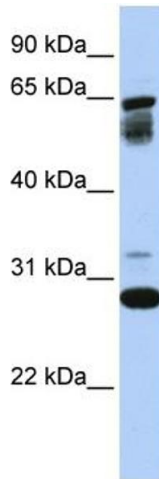
Preservative: Sodium azide

Precaution of Use: This product contains Sodium azide: a POISONOUS AND HAZARDOUS SUBSTANCE which should be handled by trained staff only.

Handling Advice: Avoid repeated freeze-thaw cycles.

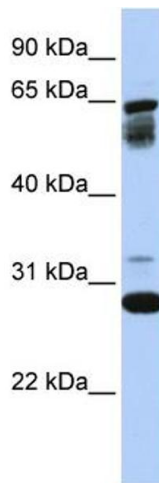
Storage: -20 °C

Storage Comment: For short term use, store at 2-8°C up to 1 week. For long term storage, store at -20°C in small aliquots to prevent freeze-thaw cycles.



Western Blotting

Image 1. WB Suggested Anti-TMEM187 Antibody Titration: 0.2-1 ug/ml ELISA Titer: 1:312500 Positive Control: 721_B cell lysate TMEM187 is supported by BioGPS gene expression data to be expressed in 721_B



Western Blotting

Image 2. WB Suggested Anti-TMEM187 Antibody Titration: 0.2-1 µg/mL ELISA Titer: 1:12500 Positive Control: 21_B cell lysate TMEM187 is supported by BioGPS gene expression data to be expressed in 721_B