

Datasheet for ABIN2782241
anti-CHST1 antibody (N-Term)[Go to Product page](#)

3 Images

Overview

Quantity:	100 µL
Target:	CHST1
Binding Specificity:	N-Term
Reactivity:	Human, Rat, Mouse, Dog, Cow, Guinea Pig, Rabbit
Host:	Rabbit
Clonality:	Polyclonal
Conjugate:	This CHST1 antibody is un-conjugated
Application:	Western Blotting (WB), Immunohistochemistry (IHC)

Product Details

Immunogen:	The immunogen is a synthetic peptide directed towards the N terminal region of human CHST1
Sequence:	SFVGQLFNQH LDFVYLFEP L YHVQNTLIP R FTQ GKSPADR RVMLGAS RDL
Predicted Reactivity:	Cow: 100%, Dog: 100%, Guinea Pig: 100%, Human: 100%, Mouse: 100%, Rabbit: 93%, Rat: 100%
Characteristics:	This is a rabbit polyclonal antibody against CHST1. It was validated on Western Blot and immunohistochemistry.
Purification:	Protein A purified

Target Details

Target:	CHST1
Alternative Name:	CHST1 (CHST1 Products)

Target Details

Background:	<p>CHST1 catalyzes the transfer of sulfate to position 6 of galactose (Gal) residues of keratan. It has a preference for sulfating keratan sulfate, but it also transfers sulfate to the unsulfated polymer. The sulfotransferase activity on sialyl LacNAc structures is much higher than the corresponding desialylated substrate, and only internal Gal residues are sulfated. It may function in the sulfation of sialyl N-acetyllactosamine oligosaccharide chains attached to glycoproteins. It participates in biosynthesis of selectin ligands. Selectin ligands are present in high endothelial cells (HEVs) and play a central role in lymphocyte homing at sites of inflammation.</p> <p>Alias Symbols: C6ST, KS6ST, KSGal6ST, KSST, GST-1</p> <p>Protein Interaction Partner: NHP2L1, SFN,</p> <p>Protein Size: 411</p>
Molecular Weight:	47 kDa
Gene ID:	8534
NCBI Accession:	NM_003654 , NP_003645
UniProt:	O43916
Pathways:	Glycosaminoglycan Metabolic Process

Application Details

Application Notes:	Optimal working dilutions should be determined experimentally by the investigator.
Comment:	Antigen size: 411 AA
Restrictions:	For Research Use only

Handling

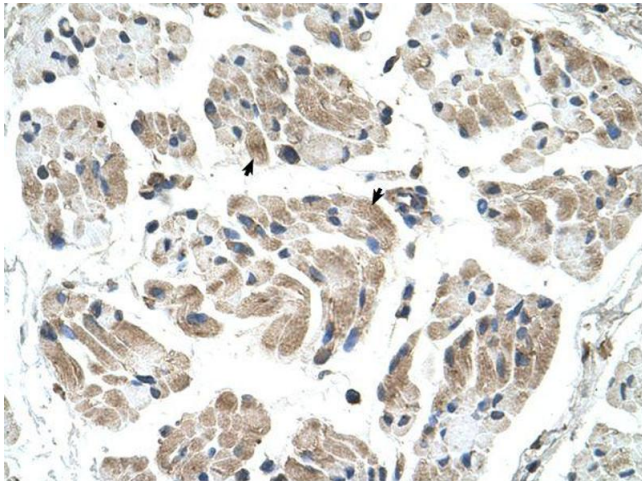
Format:	Liquid
Concentration:	Lot specific
Buffer:	Liquid. Purified antibody supplied in 1x PBS buffer with 0.09 % (w/v) sodium azide and 2 % sucrose.
Preservative:	Sodium azide
Precaution of Use:	This product contains Sodium azide: a POISONOUS AND HAZARDOUS SUBSTANCE which should be handled by trained staff only.
Handling Advice:	Avoid repeated freeze-thaw cycles.

Handling

Storage: -20 °C

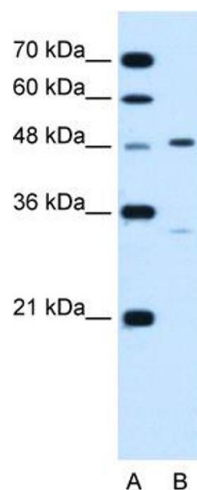
Storage Comment: For short term use, store at 2-8°C up to 1 week. For long term storage, store at -20°C in small aliquots to prevent freeze-thaw cycles.

Images



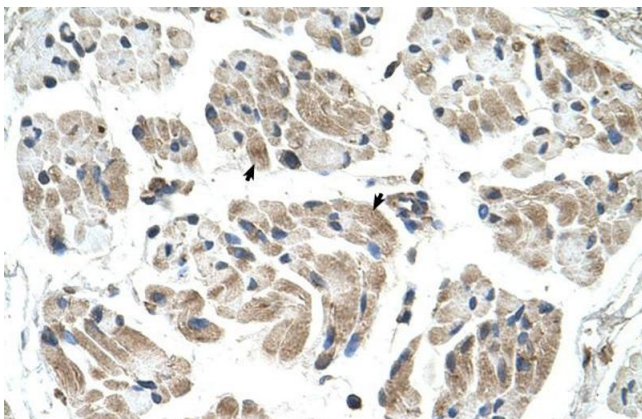
Immunohistochemistry

Image 1.



Western Blotting

Image 2. WB Suggested Anti-CHST1 Antibody Titration:
1.25 ug/ml Positive Control: Jurkat cell lysate



Immunohistochemistry

Image 3. Human Muscle