

Datasheet for ABIN2782303
anti-RORA antibody (N-Term)[Go to Product page](#)

3 Images

Overview

Quantity:	100 µL
Target:	RORA
Binding Specificity:	N-Term
Reactivity:	Human, Mouse, Rat, Cow
Host:	Rabbit
Clonality:	Polyclonal
Conjugate:	This RORA antibody is un-conjugated
Application:	Western Blotting (WB)

Product Details

Immunogen:	The immunogen is a synthetic peptide directed towards the N terminal region of human RORA
Sequence:	ARKSEPPAPV RRQSYSSTSR GISVTKKTHT SQIEIIPCKI CGDKSSGIHY
Predicted Reactivity:	Cow: 100%, Human: 100%, Mouse: 100%, Rat: 100%
Characteristics:	This is a rabbit polyclonal antibody against RORA. It was validated on Western Blot using a cell lysate as a positive control.
Purification:	Affinity Purified

Target Details

Target:	RORA
Alternative Name:	RORA (RORA Products)

Target Details

Background:	<p>The protein encoded by RORA is a member of the NR1 subfamily of nuclear hormone receptors. It can bind as a monomer or as a homodimer to hormone response elements upstream of several genes to enhance the expression of those genes. The specific functions of this protein are not known, but it has been shown to interact with NM23-2, a nucleoside diphosphate kinase involved in organogenesis and differentiation, as well as with NM23-1, the product of a tumor metastasis suppressor candidate gene. The protein encoded by this gene is a member of the NR1 subfamily of nuclear hormone receptors. It can bind as a monomer or as a homodimer to hormone response elements upstream of several genes to enhance the expression of those genes. The specific functions of this protein are not known, but it has been shown to interact with NM23-2, a nucleoside diphosphate kinase involved in organogenesis and differentiation, as well as with NM23-1, the product of a tumor metastasis suppressor candidate gene. Four transcript variants encoding different isoforms have been described for this gene.</p> <p>Alias Symbols: MGC119326, MGC119329, NR1F1, ROR1, ROR2, ROR3, RZRA, RZR-ALPHA</p> <p>Protein Interaction Partner: GFAP, NSD1, NCOA1, PSMC5, SMARCD3, PTBP1, VPRBP, UBC, EZH2, DDB1, LMO3, NR0B1, ZXDC, PNRC2, COPS5, PNRC1, EIF3I, PROX1, LRIF1, RUVBL1, CEBPB, NCOA2, MED1, EP300, RORA, MYOD1, NME2, NME1,</p> <p>Protein Size: 523</p>
Molecular Weight:	59 kDa
Gene ID:	6095
NCBI Accession:	NM_134261 , NP_599023
UniProt:	B6ZGS4
Pathways:	Nuclear Receptor Transcription Pathway , Steroid Hormone Mediated Signaling Pathway , Regulation of Lipid Metabolism by PPARalpha

Application Details

Application Notes:	Optimal working dilutions should be determined experimentally by the investigator.
Comment:	Antigen size: 523 AA
Restrictions:	For Research Use only

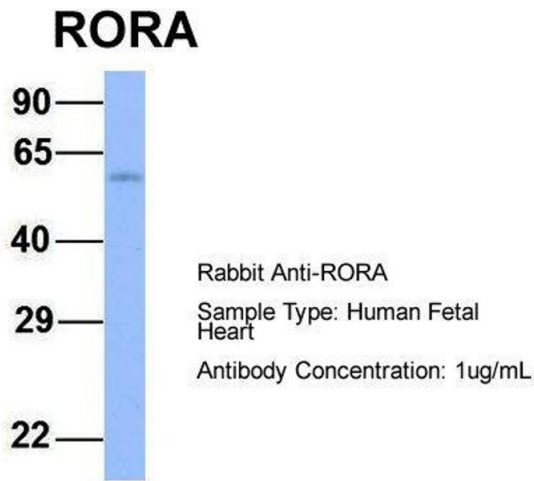
Handling

Format:	Liquid
---------	--------

Handling

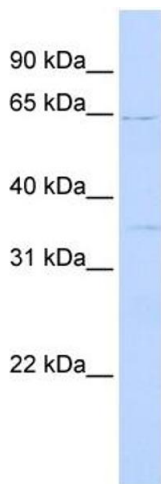
Concentration:	Lot specific
Buffer:	Liquid. Purified antibody supplied in 1x PBS buffer with 0.09 % (w/v) sodium azide and 2 % sucrose.
Preservative:	Sodium azide
Precaution of Use:	This product contains Sodium azide: a POISONOUS AND HAZARDOUS SUBSTANCE which should be handled by trained staff only.
Handling Advice:	Avoid repeated freeze-thaw cycles.
Storage:	-20 °C
Storage Comment:	For short term use, store at 2-8°C up to 1 week. For long term storage, store at -20°C in small aliquots to prevent freeze-thaw cycles.

Images



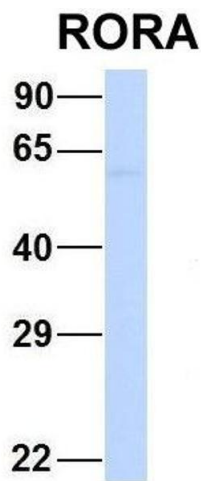
Western Blotting

Image 1. Host: Rabbit Target Name: RORA Sample Type: Human Fetal Heart Antibody Dilution: 1.0ug/ml



Western Blotting

Image 2. WB Suggested Anti-RORA Antibody Titration: 0.2-1 ug/ml ELISA Titer: 1:312500 Positive Control: Human Lung



Western Blotting

Image 3. Host: Rabbit Target Name: CHAD Sample Type:
Human Adult Placenta Antibody Dilution: 1.0ug/ml