

Datasheet for ABIN2782309

**anti-Liver Arginase antibody (N-Term)**

4 Images

1 Publication

[Go to Product page](#)

## Overview

Quantity:	100 µL
Target:	Liver Arginase (ARG1)
Binding Specificity:	N-Term
Reactivity:	Human, Rat, Mouse, Cow, Rabbit, Dog, Pig, Horse, Goat, Guinea Pig, Saccharomyces cerevisiae
Host:	Rabbit
Clonality:	Polyclonal
Conjugate:	This Liver Arginase antibody is un-conjugated
Application:	Western Blotting (WB), Immunohistochemistry (IHC)

## Product Details

Immunogen:	The immunogen is a synthetic peptide directed towards the N terminal region of human ARG1
Sequence:	SAKSRTIGII GAPFSKGQPR GGVEEGPTVL RKAGLLEKLK EQECDVKDYG
Cross-Reactivity:	Cow (Bovine), Human, Mouse (Murine), Pig (Porcine), Rabbit, Rat (Rattus)
Predicted Reactivity:	Cow: 100%, Dog: 100%, Goat: 100%, Guinea Pig: 93%, Horse: 100%, Human: 100%, Mouse: 100%, Pig: 100%, Rabbit: 100%, Rat: 100%, Yeast: 85%
Characteristics:	This is a rabbit polyclonal antibody against ARG1. It was validated on Western Blot using a cell lysate as a positive control.
Purification:	Affinity Purified

## Target Details

Target:	Liver Arginase (ARG1)
Alternative Name:	Arginase-1 ( <a href="#">ARG1 Products</a> )
Background:	<p>Arginase catalyzes the hydrolysis of arginine to ornithine and urea. At least two isoforms of mammalian arginase exist (types I and II) which differ in their tissue distribution, subcellular localization, immunologic crossreactivity and physiologic function. The type I isoform is a cytosolic enzyme and expressed predominantly in the liver as a component of the urea cycle. Inherited deficiency of this enzyme results in argininemia, an autosomal recessive disorder characterized by hyperammonemia. Arginase catalyzes the hydrolysis of arginine to ornithine and urea. At least two isoforms of mammalian arginase exist (types I and II) which differ in their tissue distribution, subcellular localization, immunologic crossreactivity and physiologic function. The type I isoform encoded by this gene, is a cytosolic enzyme and expressed predominantly in the liver as a component of the urea cycle. Inherited deficiency of this enzyme results in argininemia, an autosomal recessive disorder characterized by hyperammonemia.</p> <p>Publication Note: This RefSeq record includes a subset of the publications that are available for this gene. Please see the Entrez Gene record to access additional publications.</p> <p>Alias Symbols: -</p> <p>Protein Interaction Partner: RPA3, RPA2, RPA1, SUZ12, EZH2, BMI1, ALDH4A1, ESR1, RAD21, UBC, UCHL5, ATG101, USP53, FLOT1, NOS1, ARG2,</p> <p>Protein Size: 322</p>
Molecular Weight:	35 kDa
Gene ID:	383
NCBI Accession:	<a href="#">NM_000045</a> , <a href="#">NP_000036</a>
UniProt:	<a href="#">P05089</a>
Pathways:	<a href="#">Cellular Response to Molecule of Bacterial Origin</a>

## Application Details

Application Notes:	<p>WB Suggested Anti-ARG1 Antibody Titration: 0.2-1 µg/mL</p> <p>ELISA Titer: 1:1562500</p> <p>Positive Control: Human Liver.</p> <p>Optimal working dilutions should be determined experimentally by the investigator.</p>
Comment:	Antigen size: 322 AA
Restrictions:	For Research Use only

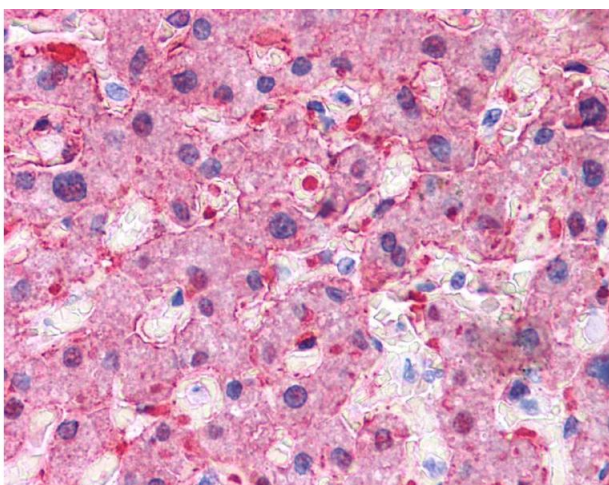
## Handling

Format:	Liquid
Concentration:	Lot specific
Buffer:	Liquid. Purified antibody supplied in 1x PBS buffer with 0.09 % (w/v) sodium azide and 2 % sucrose.
Preservative:	Sodium azide
Precaution of Use:	This product contains Sodium azide: a POISONOUS AND HAZARDOUS SUBSTANCE which should be handled by trained staff only.
Handling Advice:	Avoid repeated freeze-thaw cycles.
Storage:	-20 °C
Storage Comment:	For short term use, store at 2-8°C up to 1 week. For long term storage, store at -20°C in small aliquots to prevent freeze-thaw cycles.

## Publications

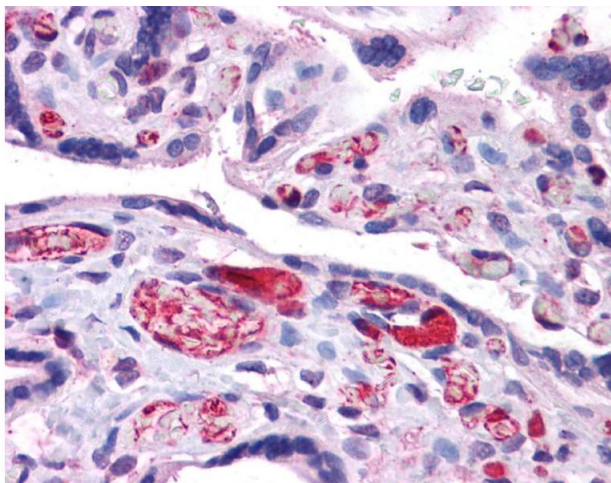
Product cited in:	Gerhard, Wagner, Feingold, Shenmen, Grouse, Schuler, Klein, Old, Rasooly, Good, Guyer, Peck, Derge, Lipman, Collins, Jang, Sherry, Feolo, Misquitta, Lee, Rotmistrovsky, Greenhut, Schaefer, Buetow et al.: "The status, quality, and expansion of the NIH full-length cDNA project: the Mammalian Gene Collection (MGC). ..." in: <b>Genome research</b> , Vol. 14, Issue 10B, pp. 2121-7, (2004) ( <a href="#">PubMed</a> ).
-------------------	--

## Images



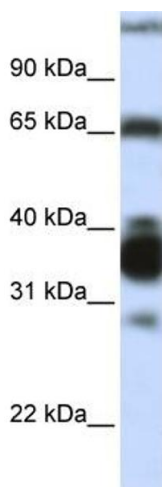
### Immunohistochemistry

Image 1.



#### Immunohistochemistry

**Image 2.**



#### Western Blotting

**Image 3.** WB Suggested Anti-ARG1 Antibody Titration: 0.2-1 ug/ml ELISA Titer: 1:1562500 Positive Control: Human Liver

Please check the [product details page](#) for more images. Overall 4 images are available for ABIN2782309.