

Datasheet for ABIN2782311
anti-MBL2 antibody (Middle Region)



[Go to Product page](#)

2 Images

Overview

Quantity:	100 µL
Target:	MBL2
Binding Specificity:	Middle Region
Reactivity:	Human, Rat, Cow, Goat, Sheep, Horse, Pig
Host:	Rabbit
Clonality:	Polyclonal
Conjugate:	This MBL2 antibody is un-conjugated
Application:	Western Blotting (WB)

Product Details

Immunogen:	The immunogen is a synthetic peptide directed towards the middle region of human MBL2
Sequence:	KEEAFLGITD EKTEGQFVDL TGNRLTYTNW NEGEPNNAGS DEDCVLLLN
Predicted Reactivity:	Cow: 77%, Goat: 77%, Horse: 92%, Human: 100%, Pig: 92%, Rat: 77%, Sheep: 77%
Characteristics:	This is a rabbit polyclonal antibody against MBL2. It was validated on Western Blot using a cell lysate as a positive control.
Purification:	Affinity Purified

Target Details

Target:	MBL2
Alternative Name:	MBL2 (MBL2 Products)

Target Details

Background:	<p>This gene encodes the soluble mannose-binding lectin or mannose-binding protein found in serum. The protein encoded belongs to the collectin family and is an important element in the innate immune system. The protein recognizes mannose and N-acetylglucosamine on many microorganisms, and is capable of activating the classical complement pathway. Deficiencies of this gene have been associated with susceptibility to autoimmune and infectious diseases.</p> <p>Alias Symbols: COLEC1, HSMBPC, MBL, MBP, MBP1, MGC116832, MGC116833, MBL2D, MBP-C</p> <p>Protein Interaction Partner: MASP2, MAD2L1, MASP1, MBL2, PTPRC, KRT1, CD93, CALCR, CALR,</p> <p>Protein Size: 248</p>
Molecular Weight:	24 kDa
Gene ID:	4153
NCBI Accession:	NM_000242 , NP_000233
UniProt:	Q66S64
Pathways:	Complement System , Positive Regulation of Immune Effector Process

Application Details

Application Notes:	Optimal working dilutions should be determined experimentally by the investigator.
Comment:	Antigen size: 248 AA
Restrictions:	For Research Use only

Handling

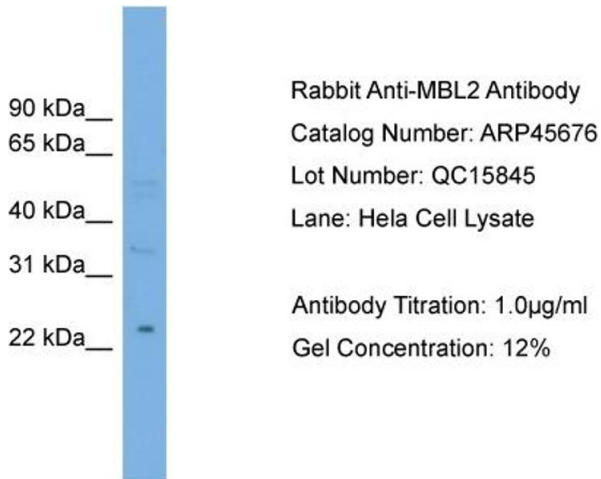
Format:	Liquid
Concentration:	Lot specific
Buffer:	Liquid. Purified antibody supplied in 1x PBS buffer with 0.09 % (w/v) sodium azide and 2 % sucrose.
Preservative:	Sodium azide
Precaution of Use:	This product contains Sodium azide: a POISONOUS AND HAZARDOUS SUBSTANCE which should be handled by trained staff only.
Handling Advice:	Avoid repeated freeze-thaw cycles.

Handling

Storage: -20 °C

Storage Comment: For short term use, store at 2-8°C up to 1 week. For long term storage, store at -20°C in small aliquots to prevent freeze-thaw cycles.

Images



Western Blotting

Image 1. WB Suggested Anti-MBL2

Antibody Titration: 0.2-1 µg/mL

Positive Control: HeLa cell lysate



Western Blotting

Image 2. WB Suggested Anti-MBL2 Antibody Titration: 0.2-1
ug/ml Positive Control: HeLa cell lysate