

Datasheet for ABIN2782319
anti-CPS1 antibody (Middle Region)

6 Images

[Go to Product page](#)

Overview

Quantity:	100 µL
Target:	CPS1
Binding Specificity:	Middle Region
Reactivity:	Human, Rat, Mouse, Dog, Guinea Pig, Cow, Rabbit, Horse, Saccharomyces cerevisiae
Host:	Rabbit
Clonality:	Polyclonal
Conjugate:	This CPS1 antibody is un-conjugated
Application:	Western Blotting (WB), Immunohistochemistry (IHC)

Product Details

Immunogen:	The immunogen is a synthetic peptide directed towards the middle region of human CPS1
Sequence:	YPSVTNYLYV TYNGQEHDVN FDDHGMMVLG CGPYHIGSSV EFDWCAVSSI
Predicted Reactivity:	Cow: 93%, Dog: 93%, Guinea Pig: 86%, Horse: 93%, Human: 100%, Mouse: 79%, Rabbit: 86%, Rat: 86%, Yeast: 77%
Characteristics:	This is a rabbit polyclonal antibody against CPS1. It was validated on Western Blot and immunohistochemistry.
Purification:	Protein A purified

Target Details

Target:	CPS1
---------	------

Target Details

Alternative Name:	CPS1 (CPS1 Products)
Background:	<p>Carbamoyl phosphate synthetase I is the rate-limiting enzyme that catalyzes the first committed step of the hepatic urea cycle. The mitochondrial isozyme is designated CPS I and the cytoplasmic enzyme CPS II. CPS II is part of a multifunctional enzyme, called the CAD trifunctional protein of pyrimidine biosynthesis. Carbamoyl phosphate synthetase I (EC 6.3.4.16) is the rate-limiting enzyme that catalyzes the first committed step of the hepatic urea cycle. The mitochondrial isozyme is designated CPS I and the cytoplasmic enzyme CPS II. CPS II is part of a multifunctional enzyme, called the CAD trifunctional protein of pyrimidine biosynthesis (CAD, MIM 114010), which has been mapped to 2p21.[supplied by OMIM].</p> <p>Alias Symbols: CPSASE1</p> <p>Protein Interaction Partner: AGO2, ASB1, FBXO6, UBC, MRPS26, LRPPRC, TOMM70A, SEC22B, PCBP1, HSPA9, HSPA1A, FH, CPT1A, MYC, ELAVL1, SUMO2, RAD21, Csnk1e, Cdk1, RICTOR, YWHAQ, H2AFX, ARAF, RAF1,</p> <p>Protein Size: 1500</p>
Molecular Weight:	165 kDa
Gene ID:	1373
NCBI Accession:	NM_001875 , NP_001866
UniProt:	P31327
Pathways:	Response to Growth Hormone Stimulus , Cellular Glucan Metabolic Process

Application Details

Application Notes:	Optimal working dilutions should be determined experimentally by the investigator.
Comment:	Antigen size: 1500 AA
Restrictions:	For Research Use only

Handling

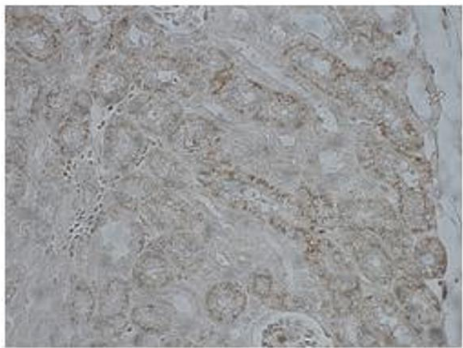
Format:	Liquid
Concentration:	Lot specific
Buffer:	Liquid. Purified antibody supplied in 1x PBS buffer with 0.09 % (w/v) sodium azide and 2 % sucrose.
Preservative:	Sodium azide

Handling

Precaution of Use:	This product contains Sodium azide: a POISONOUS AND HAZARDOUS SUBSTANCE which should be handled by trained staff only.
Handling Advice:	Avoid repeated freeze-thaw cycles.
Storage:	-20 °C
Storage Comment:	For short term use, store at 2-8°C up to 1 week. For long term storage, store at -20°C in small aliquots to prevent freeze-thaw cycles.

Images

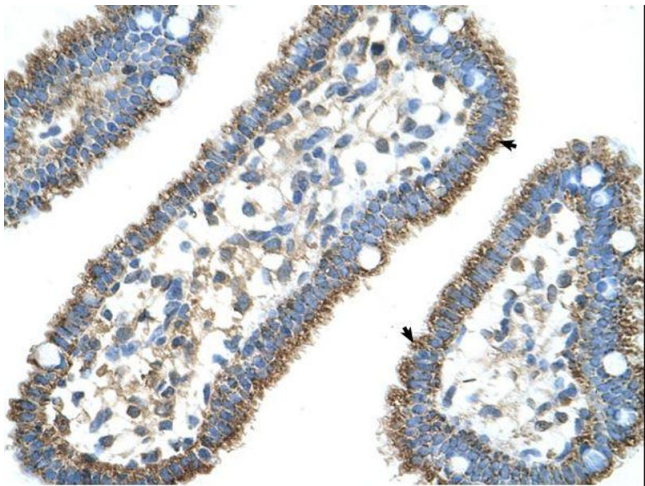
CPS



Brown: CPS

Immunohistochemistry

Image 1. Sample Type : Pig kidney Primary Antibody Dilution : 1:500 Secondary Antibody : Anti-rabbit-biotin, streptavidin-HRP Secondary Antibody Dilution : 1:500 Color/Signal Descriptions : Brown: CPS Gene Name : CPS1 Submitted by : Juan C. Mari, USDA/ARS Children's Nutrition Research Center Baylor College of Medicine

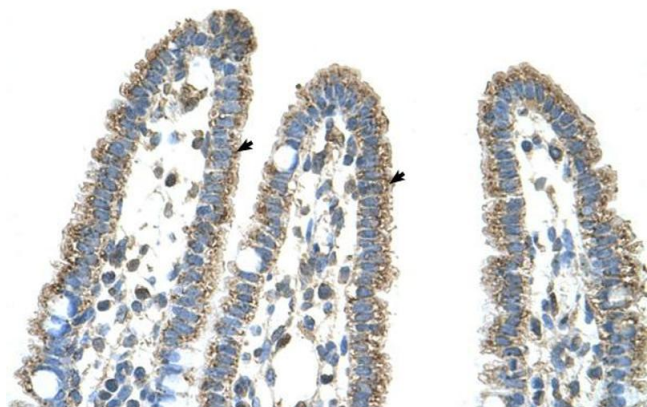


Immunohistochemistry

Image 2.

Immunohistochemistry

Image 3. Human Intestine



Please check the [product details page](#) for more images. Overall 6 images are available for ABIN2782319.