



Datasheet for ABIN2782323
anti-ALDH4A1 antibody (N-Term)



[Go to Product page](#)

2 Images

Overview

Quantity:	100 µL
Target:	ALDH4A1
Binding Specificity:	N-Term
Reactivity:	Human, Mouse, Rat, Cow, Dog, Horse, Rabbit, Guinea Pig, Pig
Host:	Rabbit
Clonality:	Polyclonal
Conjugate:	This ALDH4A1 antibody is un-conjugated
Application:	Western Blotting (WB), Immunohistochemistry (IHC)

Product Details

Immunogen:	The immunogen is a synthetic peptide directed towards the N terminal region of human ALDH4A1
Sequence:	QGKTVIQAEI DAAAEELIDFF RFNAKYAVEL EGQQPISVPP STNSTVYRGL
Predicted Reactivity:	Cow: 86%, Dog: 93%, Guinea Pig: 85%, Horse: 100%, Human: 100%, Mouse: 92%, Pig: 100%, Rabbit: 92%, Rat: 92%
Characteristics:	This is a rabbit polyclonal antibody against ALDH4A1. It was validated on Western Blot and immunohistochemistry.
Purification:	Protein A purified

Target Details

Target:	ALDH4A1
---------	---------

Target Details

Alternative Name:	ALDH4A1 (ALDH4A1 Products)
Background:	<p>ALDH4A1 belongs to the aldehyde dehydrogenase family of proteins. This enzyme is a mitochondrial matrix NAD-dependent dehydrogenase which catalyzes the second step of the proline degradation pathway, converting pyrroline-5-carboxylate to glutamate. Deficiency of this enzyme is associated with type II hyperprolinemia, an autosomal recessive disorder characterized by accumulation of delta-1-pyrroline-5-carboxylate (P5C) and proline.</p> <p>Alias Symbols: RP11-128M10.1, ALDH4, P5CD, P5CDh, P5CDhL, P5CDhS</p> <p>Protein Interaction Partner: UBC, MDM2, ALDH4A1, ARG1, APP,</p> <p>Protein Size: 214</p>
Molecular Weight:	24 kDa
Gene ID:	8659
NCBI Accession:	NM_001161504
UniProt:	Q5TF55
Pathways:	Monocarboxylic Acid Catabolic Process

Application Details

Application Notes:	Optimal working dilutions should be determined experimentally by the investigator.
Comment:	Antigen size: 214 AA
Restrictions:	For Research Use only

Handling

Format:	Liquid
Concentration:	Lot specific
Buffer:	Liquid. Purified antibody supplied in 1x PBS buffer with 0.09 % (w/v) sodium azide and 2 % sucrose.
Preservative:	Sodium azide
Precaution of Use:	This product contains Sodium azide: a POISONOUS AND HAZARDOUS SUBSTANCE which should be handled by trained staff only.
Handling Advice:	Avoid repeated freeze-thaw cycles.
Storage:	-20 °C

Handling

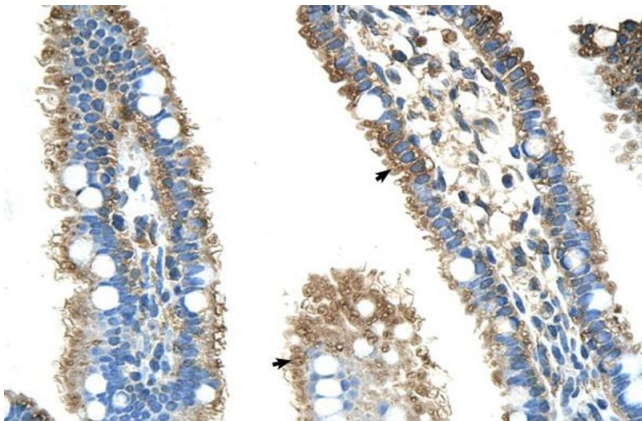
Storage Comment: For short term use, store at 2-8°C up to 1 week. For long term storage, store at -20°C in small aliquots to prevent freeze-thaw cycles.

Images



Western Blotting

Image 1. WB Suggested Anti-ALDH4A1 Antibody Titration: 2.5ug/ml Positive Control: HepG2 cell lysate ALDH4A1 is strongly supported by BioGPS gene expression data to be expressed in Human HepG2 cells



Immunohistochemistry

Image 2. Human Intestine