

Datasheet for ABIN2782325
anti-ECHS1 antibody (N-Term)[1 Image](#)[1 Publication](#)[Go to Product page](#)

Overview

Quantity:	100 µL
Target:	ECHS1
Binding Specificity:	N-Term
Reactivity:	Human, Mouse, Rat, Cow, Rabbit, Zebrafish (Danio rerio), Guinea Pig, Horse, Sheep, Saccharomyces cerevisiae
Host:	Rabbit
Clonality:	Polyclonal
Conjugate:	This ECHS1 antibody is un-conjugated
Application:	Western Blotting (WB)

Product Details

Immunogen:	The immunogen is a synthetic peptide directed towards the N terminal region of human ECHS1
Sequence:	IIAEKRKGKNN TVGLIQLNRP KALNALCDGL IDELNQALKT FEEDPAVGAI
Predicted Reactivity:	Cow: 100%, Guinea Pig: 100%, Horse: 93%, Human: 100%, Mouse: 100%, Rabbit: 100%, Rat: 100%, Sheep: 100%, Yeast: 100%, Zebrafish: 93%
Characteristics:	This is a rabbit polyclonal antibody against ECHS1. It was validated on Western Blot using a cell lysate as a positive control.
Purification:	Affinity Purified

Target Details

Target:	ECHS1
---------	-------

Target Details

Alternative Name:	ECHS1 (ECHS1 Products)
Background:	<p>ECHS1 functions in the second step of the mitochondrial fatty acid beta-oxidation pathway. It catalyzes the hydration of 2-trans-enoyl-coenzyme A (CoA) intermediates to L-3-hydroxyacyl-CoAs. The protein is a member of the hydratase/isomerase superfamily. It localizes to the mitochondrial matrix. Transcript variants utilizing alternative transcription initiation sites have been described in the literature. The protein encoded by this gene functions in the second step of the mitochondrial fatty acid beta-oxidation pathway. It catalyzes the hydration of 2-trans-enoyl-coenzyme A (CoA) intermediates to L-3-hydroxyacyl-CoAs. The gene product is a member of the hydratase/isomerase superfamily. It localizes to the mitochondrial matrix. Transcript variants utilizing alternative transcription initiation sites have been described in the literature. Publication Note: This RefSeq record includes a subset of the publications that are available for this gene. Please see the Entrez Gene record to access additional publications.</p> <p>Alias Symbols: SCEH</p> <p>Protein Interaction Partner: SUMO2, UBC, MDM2, GINS3, SMEK2, CNBP2, DCPS, ABHD14A, YWHAQ, SLC9A3R1, USP14, YWHAZ, VCL, UBE2V1, TGM2, RAP1GDS1, PFAS, HSPA9, GSS, CAPN1, CLDN12, UBA1, PPM1B, SERPINA1, ECHS1, CYP2E1, GRB2, UCHL5, UBA5, DDA1, CBWD2, EPB41,</p> <p>Protein Size: 290</p>
Molecular Weight:	28 kDa
Gene ID:	1892
NCBI Accession:	NM_004092 , NP_004083
UniProt:	P30084
Pathways:	Monocarboxylic Acid Catabolic Process

Application Details

Application Notes:	Optimal working dilutions should be determined experimentally by the investigator.
Comment:	Antigen size: 290 AA
Restrictions:	For Research Use only

Handling

Format:	Liquid
Concentration:	Lot specific

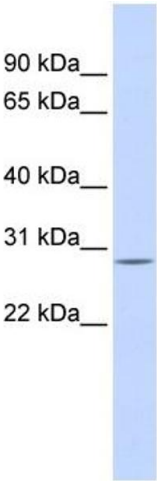
Handling

Buffer:	Liquid. Purified antibody supplied in 1x PBS buffer with 0.09 % (w/v) sodium azide and 2 % sucrose.
Preservative:	Sodium azide
Precaution of Use:	This product contains Sodium azide: a POISONOUS AND HAZARDOUS SUBSTANCE which should be handled by trained staff only.
Handling Advice:	Avoid repeated freeze-thaw cycles.
Storage:	-20 °C
Storage Comment:	For short term use, store at 2-8°C up to 1 week. For long term storage, store at -20°C in small aliquots to prevent freeze-thaw cycles.

Publications

Product cited in:	Spellman, Ahmed, Dubach, Gardiner: "Expression of trisomic proteins in Down syndrome model systems." in: Gene , Vol. 512, Issue 2, pp. 219-25, (2012) (PubMed).
-------------------	--

Images



Western Blotting

Image 1. WB Suggested Anti-ECHS1 Antibody Titration: 0.2-1 ug/ml ELISA Titer: 1:312500 Positive Control: Human heart