

Datasheet for ABIN2782334
anti-TDO2 antibody (N-Term)[Go to Product page](#)

7 Images

Overview

Quantity:	100 µL
Target:	TDO2
Binding Specificity:	N-Term
Reactivity:	Human, Dog, Pig
Host:	Rabbit
Clonality:	Polyclonal
Conjugate:	This TDO2 antibody is un-conjugated
Application:	Western Blotting (WB), Immunohistochemistry (IHC)

Product Details

Immunogen:	The immunogen is a synthetic peptide directed towards the N terminal region of human TDO2
Sequence:	MSGCPFLGNN FGYTFKKLPV EGSEEDKSQT GVNRA SKGGL IYGNYLHLEK
Predicted Reactivity:	Dog: 79%, Human: 100%, Pig: 92%
Characteristics:	This is a rabbit polyclonal antibody against TDO2. It was validated on Western Blot and immunohistochemistry.
Purification:	Affinity Purified

Target Details

Target:	TDO2
Alternative Name:	TDO2 (TDO2 Products)

Target Details

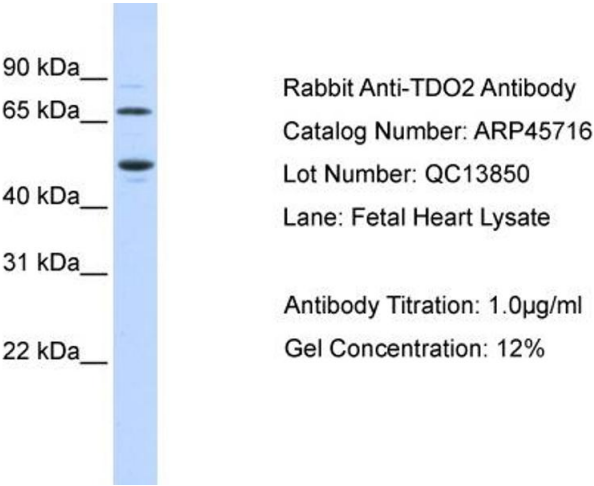
Background:	<p>Tryptophan 2,3-dioxygenase (EC 1.13.11.11) plays a role in catalyzing the first and rate-limiting step in the kynurenine pathway, the major pathway of tryptophan metabolism.</p> <p>Alias Symbols: TDO, TPH2, TRPO, TO</p> <p>Protein Interaction Partner: MOB3C, NGB, MOB1A, SDCBP2, ZFYVE26, DPM1, ASMTL, TDO2, SDCBP, PSMA1, EIF4E, NMNAT1, REL, MEOX2, PRMT6, KDM1A,</p> <p>Protein Size: 799</p>
Molecular Weight:	48 kDa
Gene ID:	6999
NCBI Accession:	NM_005651 , NP_005642
UniProt:	P48775

Application Details

Application Notes:	Optimal working dilutions should be determined experimentally by the investigator.
Comment:	Antigen size: 799 AA
Restrictions:	For Research Use only

Handling

Format:	Liquid
Concentration:	Lot specific
Buffer:	Liquid. Purified antibody supplied in 1x PBS buffer with 0.09 % (w/v) sodium azide and 2 % sucrose.
Preservative:	Sodium azide
Precaution of Use:	This product contains Sodium azide: a POISONOUS AND HAZARDOUS SUBSTANCE which should be handled by trained staff only.
Handling Advice:	Avoid repeated freeze-thaw cycles.
Storage:	-20 °C
Storage Comment:	For short term use, store at 2-8°C up to 1 week. For long term storage, store at -20°C in small aliquots to prevent freeze-thaw cycles.



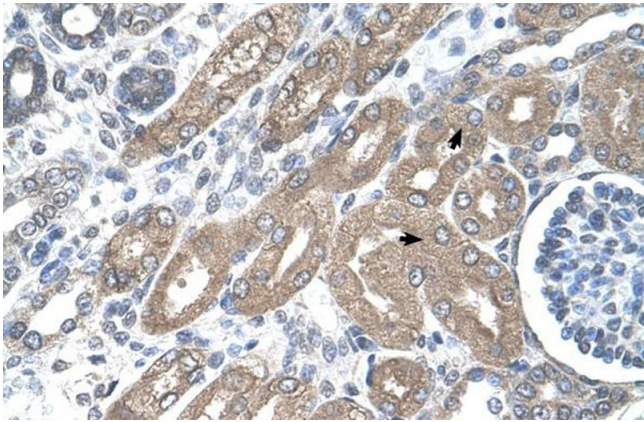
Western Blotting

Image 1. WB Suggested Anti-TDO2 Antibody Titration:

0.2-1 ug/ml

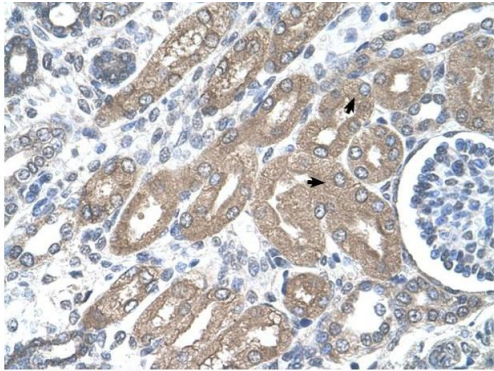
ELISA Titer: 1:62500

Positive Control: Jurkat cell lysate



Immunohistochemistry

Image 2.



Rabbit Anti-CDH8 Antibody
Catalog Number: ARP45716
Lot Number: QC15201
Paraffin Embedded Tissue: Human Kidney
Cells with Positive label: Epithelial cells of renal tubule (Indicated with Arrows)
Antibody Concentration: 4.0-8.0 µg/ml
Magnification: 400X

Immunohistochemistry

Image 3. Rabbit Anti-CDH8 Antibody Paraffin Embedded

Tissue: Human Kidney Cellular Data: Epithelial cells of renal tubule Antibody Concentration: 4.0-8.0 ug/ml Magnification: 400X

Please check the [product details page](#) for more images. Overall 7 images are available for ABIN2782334.