



[Go to Product page](#)

Datasheet for ABIN2782336
anti-SBDS antibody (N-Term)

2 Images

1 Publication

Overview

Quantity:	100 µL
Target:	SBDS
Binding Specificity:	N-Term
Reactivity:	Human, Mouse, Rat, Dog, Zebrafish (Danio rerio), Horse, Cow, Guinea Pig, Rabbit
Host:	Rabbit
Clonality:	Polyclonal
Conjugate:	This SBDS antibody is un-conjugated
Application:	Western Blotting (WB), Immunohistochemistry (IHC)

Product Details

Immunogen:	The immunogen is a synthetic peptide directed towards the N terminal region of human SBDS
Sequence:	LQTHSVFVNV SKGQVAKKED LISAFGTDDQ TEICKQILTK GEVQVSDKER
Predicted Reactivity:	Cow: 100%, Dog: 100%, Guinea Pig: 100%, Horse: 100%, Human: 100%, Mouse: 100%, Rabbit: 93%, Rat: 100%, Zebrafish: 85%
Characteristics:	This is a rabbit polyclonal antibody against SBDS. It was validated on Western Blot and immunohistochemistry.
Purification:	Protein A purified

Target Details

Target:	SBDS
---------	------

Target Details

Alternative Name: [SBDS \(SBDS Products\)](#)

Background: SBDS is a member of a highly conserved protein family that exists from archaea to vertebrates and plants. The protein may function in RNA metabolism. Mutations within its gene are associated with Shwachman-Bodian-Diamond syndrome. This gene encodes a member of a highly conserved protein family that exists from archaea to vertebrates and plants. The encoded protein may function in RNA metabolism. Mutations within this gene are associated with Shwachman-Bodian-Diamond syndrome. An alternative transcript has been described, but its biological nature has not been determined. This gene has a closely linked pseudogene that is distally located.

Alias Symbols: CGI-97, FLJ10917, SDS, SWDS

Protein Interaction Partner: SUMO2, TYMS, PNP, IDH1, GOT1, UBC, CHAMP1, MPLKIP, MRPL53, SARNP, SLIRP, SRPRB, ACOT13, SRRM2, TIMM44, TOMM40, UBE4B, SCO2, SNX3, STX7, SF1, VDAC3, TIAL1, SPR, RBMS1, NDUFA7, NDUFA2, IDH3G, STOM, ACAA1, ACD, TERF2IP, POT1, TERF1, CLN3,

Protein Size: 250

Molecular Weight: 28 kDa

Gene ID: 51119

NCBI Accession: [NM_016038](#), [NP_057122](#)

UniProt: [Q9Y3A5](#)

Pathways: [Ribonucleoprotein Complex Subunit Organization](#), [Ribosome Assembly](#)

Application Details

Application Notes: Optimal working dilutions should be determined experimentally by the investigator.

Comment: Antigen size: 250 AA

Restrictions: For Research Use only

Handling

Format: Liquid

Concentration: Lot specific

Buffer: Liquid. Purified antibody supplied in 1x PBS buffer with 0.09 % (w/v) sodium azide and 2 % sucrose.

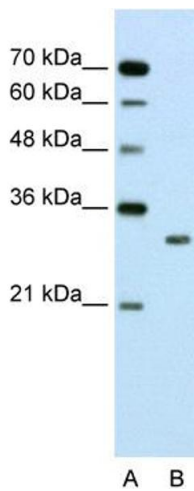
Handling

Preservative:	Sodium azide
Precaution of Use:	This product contains Sodium azide: a POISONOUS AND HAZARDOUS SUBSTANCE which should be handled by trained staff only.
Handling Advice:	Avoid repeated freeze-thaw cycles.
Storage:	-20 °C
Storage Comment:	For short term use, store at 2-8°C up to 1 week. For long term storage, store at -20°C in small aliquots to prevent freeze-thaw cycles.

Publications

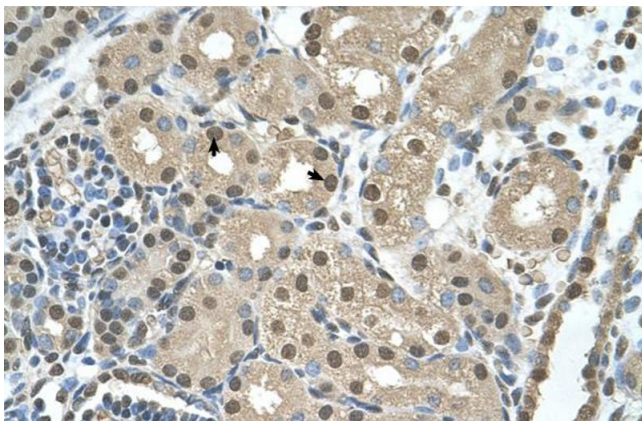
Product cited in: Spellman, Ahmed, Dubach, Gardiner: "Expression of trisomic proteins in Down syndrome model systems." in: **Gene**, Vol. 512, Issue 2, pp. 219-25, (2012) ([PubMed](#)).

Images



Western Blotting

Image 1. WB Suggested Anti-SBDS Antibody Titration: 2.5ug/ml Positive Control: Jurkat cell lysate



Immunohistochemistry

Image 2. Human kidney