

Datasheet for ABIN2782337
anti-SBDS antibody (C-Term)[Go to Product page](#)

2 Images

Overview

Quantity:	100 µL
Target:	SBDS
Binding Specificity:	C-Term
Reactivity:	Human, Mouse, Rat, Dog, Zebrafish (Danio rerio), Horse, Cow, Guinea Pig, Rabbit, Pig
Host:	Rabbit
Clonality:	Polyclonal
Conjugate:	This SBDS antibody is un-conjugated
Application:	Western Blotting (WB), Immunohistochemistry (IHC)

Product Details

Immunogen:	The immunogen is a synthetic peptide directed towards the C terminal region of human SBDS
Sequence:	DYGQQLAIVC LIDPGCFREI DELIKKETKG KGSLEVLNLK DVEEGDEKFE
Predicted Reactivity:	Cow: 93%, Dog: 100%, Guinea Pig: 93%, Horse: 100%, Human: 100%, Mouse: 93%, Pig: 100%, Rabbit: 93%, Rat: 93%, Zebrafish: 86%
Characteristics:	This is a rabbit polyclonal antibody against SBDS. It was validated on Western Blot and immunohistochemistry.
Purification:	Protein A purified

Target Details

Target:	SBDS
---------	------

Target Details

Alternative Name:	SBDS (SBDS Products)
Background:	<p>SBDS is a member of a highly conserved protein family that exists from archaea to vertebrates and plants. The protein may function in RNA metabolism. Mutations within its gene are associated with Shwachman-Bodian-Diamond syndrome. This gene encodes a member of a highly conserved protein family that exists from archaea to vertebrates and plants. The encoded protein may function in RNA metabolism. Mutations within this gene are associated with Shwachman-Bodian-Diamond syndrome. An alternative transcript has been described, but its biological nature has not been determined. This gene has a closely linked pseudogene that is distally located.</p> <p>Alias Symbols: CGI-97, FLJ10917, SDS, SWDS</p> <p>Protein Interaction Partner: SUMO2, TYMS, PNP, IDH1, GOT1, UBC, CHAMP1, MPLKIP, MRPL53, SARNP, SLIRP, SRPRB, ACOT13, SRRM2, TIMM44, TOMM40, UBE4B, SCO2, SNX3, STX7, SF1, VDAC3, TIAL1, SPR, RBMS1, NDUFA7, NDUFA2, IDH3G, STOM, ACAA1, ACD, TERF2IP, POT1, TERF1, CLN3,</p> <p>Protein Size: 250</p>
Molecular Weight:	28 kDa
Gene ID:	51119
NCBI Accession:	NM_016038 , NP_057122
UniProt:	Q9Y3A5
Pathways:	Ribonucleoprotein Complex Subunit Organization , Ribosome Assembly

Application Details

Application Notes:	Optimal working dilutions should be determined experimentally by the investigator.
Comment:	Antigen size: 250 AA
Restrictions:	For Research Use only

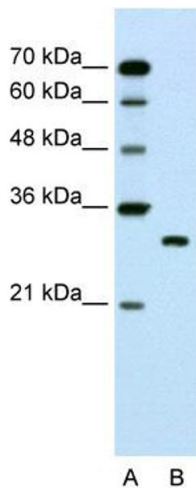
Handling

Format:	Liquid
Concentration:	Lot specific
Buffer:	Liquid. Purified antibody supplied in 1x PBS buffer with 0.09 % (w/v) sodium azide and 2 % sucrose.

Handling

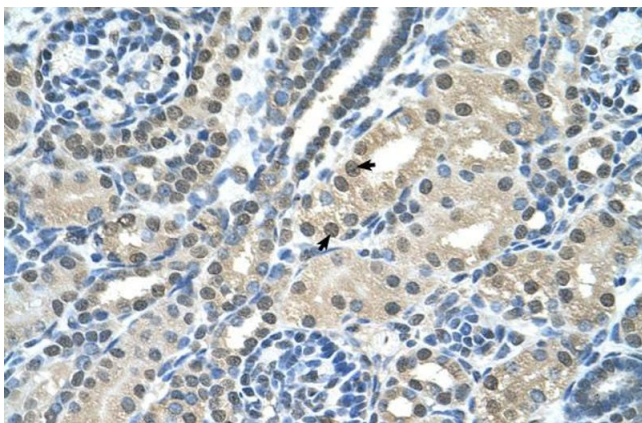
Preservative:	Sodium azide
Precaution of Use:	This product contains Sodium azide: a POISONOUS AND HAZARDOUS SUBSTANCE which should be handled by trained staff only.
Handling Advice:	Avoid repeated freeze-thaw cycles.
Storage:	-20 °C
Storage Comment:	For short term use, store at 2-8°C up to 1 week. For long term storage, store at -20°C in small aliquots to prevent freeze-thaw cycles.

Images



Western Blotting

Image 1. WB Suggested Anti-SBDS Antibody Titration:
1.25ug/ml Positive Control: Jurkat cell lysate



Immunohistochemistry

Image 2. Human kidney