

Datasheet for ABIN2782339
anti-MST1 antibody (Middle Region)



[Go to Product page](#)

3 Images

Overview

Quantity:	100 µL
Target:	MST1
Binding Specificity:	Middle Region
Reactivity:	Human, Dog, Cow, Horse, Rabbit, Pig
Host:	Rabbit
Clonality:	Polyclonal
Conjugate:	This MST1 antibody is un-conjugated
Application:	Western Blotting (WB), Immunohistochemistry (IHC)

Product Details

Immunogen:	The immunogen is a synthetic peptide directed towards the middle region of human MST1
Sequence:	SCHMPLTGYE VWLGLTFQNP QHGEPQLQRV PVAKMVCGPS GSQLVLLKLE
Predicted Reactivity:	Cow: 77%, Dog: 85%, Horse: 85%, Human: 100%, Pig: 86%, Rabbit: 86%
Characteristics:	This is a rabbit polyclonal antibody against MST1. It was validated on Western Blot using a cell lysate as a positive control.
Purification:	Affinity Purified

Target Details

Target:	MST1
Alternative Name:	MST1 (MST1 Products)

Target Details

Background: MST1 belongs to the peptidase S1 family, plasminogen subfamily. It contains 4 kringle domains, 1 PAN domain and 1 peptidase S1 domain. MST1 probably has no proteolytic activity, since crucial characteristic of serine proteases catalytic sites are not conserved.

Alias Symbols: D3F15S2, DNF15S2, HGFL, MSP, NF15S2

Protein Interaction Partner: FOXO1, HIST2H2BE, MST1, DAXX, MOB1A, MST1R, KLKB1, SERPINA3,

Protein Size: 711

Molecular Weight: 80 kDa

Gene ID: 4485

NCBI Accession: [NM_020998](#), [NP_066278](#)

UniProt: [P26927](#)

Application Details

Application Notes: Optimal working dilutions should be determined experimentally by the investigator.

Comment: Antigen size: 711 AA

Restrictions: For Research Use only

Handling

Format: Liquid

Concentration: Lot specific

Buffer: Liquid. Purified antibody supplied in 1x PBS buffer with 0.09 % (w/v) sodium azide and 2 % sucrose.

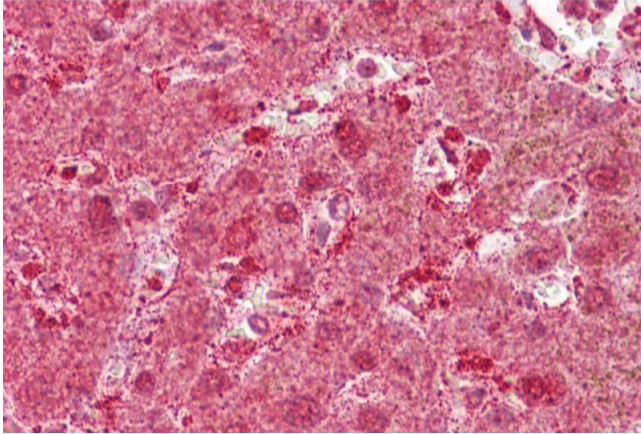
Preservative: Sodium azide

Precaution of Use: This product contains Sodium azide: a POISONOUS AND HAZARDOUS SUBSTANCE which should be handled by trained staff only.

Handling Advice: Avoid repeated freeze-thaw cycles.

Storage: -20 °C

Storage Comment: For short term use, store at 2-8°C up to 1 week. For long term storage, store at -20°C in small aliquots to prevent freeze-thaw cycles.



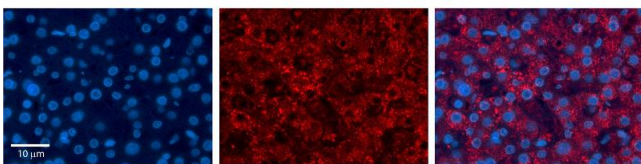
Immunohistochemistry

Image 1. Immunohistochemistry with Liver tissue at an antibody concentration of 5µg/ml using anti-MST1 antibody (ARP45724_P050)



Western Blotting

Image 2. WB Suggested Anti-MST1 Antibody Titration: 0.2-1 ug/ml ELISA Titer: 1:312500 Positive Control: Human Lung



Immunohistochemistry

Image 3. MST1 antibody - middle region Formalin Fixed Paraffin Embedded Tissue: Human Liver Tissue Observed Staining: Cytoplasm in hepatocytes Primary Antibody Concentration: 1:100 Other Working Concentrations: 1/600 Secondary Antibody: Donkey anti-Rabbit-Cy3 Secondary Antibody Concentration: 1:200 Magnification: 20X Exposure Time: 0.5 - 2.0 sec