



Datasheet for ABIN2782346
anti-DGKH antibody (Middle Region)



[Go to Product page](#)

2 Images

Overview

Quantity:	100 µL
Target:	DGKH
Binding Specificity:	Middle Region
Reactivity:	Human, Rat, Mouse, Horse, Dog, Zebrafish (Danio rerio), Cow, Rabbit, Guinea Pig
Host:	Rabbit
Clonality:	Polyclonal
Conjugate:	This DGKH antibody is un-conjugated
Application:	Western Blotting (WB), Immunohistochemistry (IHC)

Product Details

Immunogen:	The immunogen is a synthetic peptide directed towards the middle region of human DGKH
Sequence:	DLDSVDGYSE KCVMNNYFGI GLDAKISLEF NNKREEHPEK CRSRTKNLMW
Predicted Reactivity:	Cow: 100%, Dog: 100%, Guinea Pig: 100%, Horse: 100%, Human: 100%, Mouse: 100%, Rabbit: 100%, Rat: 100%, Zebrafish: 100%
Characteristics:	This is a rabbit polyclonal antibody against DGKH. It was validated on Western Blot using a cell lysate as a positive control.
Purification:	Affinity Purified

Target Details

Target:	DGKH
---------	------

Target Details

Alternative Name:	DGKH (DGKH Products)
Background:	<p>DGKH is a member of the diacylglycerol kinase (DGK) enzyme family of proteins, specifically the type II DGK subfamily. Members of this family are involved in regulating the intracellular concentrations of diacylglycerol and phosphatidic acid. This gene encodes a member of the diacylglycerol kinase (DGK) enzyme family of proteins, specifically the type II DGK subfamily. Members of this family are involved in regulating the intracellular concentrations of diacylglycerol and phosphatidic acid. Two transcript variants encoding distinct isoforms have been identified for this gene.</p> <p>Alias Symbols: DGKeta, DKFZp76111510</p> <p>Protein Interaction Partner: PPP2R1A, TRAF5, ARRB1, DGKH, DGKD,</p> <p>Protein Size: 1220</p>
Molecular Weight:	135 kDa
Gene ID:	160851
NCBI Accession:	NM_178009 , NP_821077
UniProt:	Q86XP1

Application Details

Application Notes:	Optimal working dilutions should be determined experimentally by the investigator.
Comment:	Antigen size: 1220 AA
Restrictions:	For Research Use only

Handling

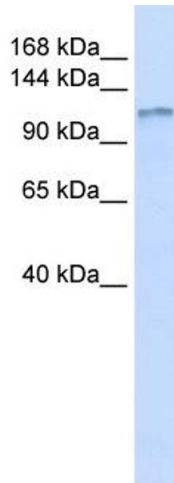
Format:	Liquid
Concentration:	Lot specific
Buffer:	Liquid. Purified antibody supplied in 1x PBS buffer with 0.09 % (w/v) sodium azide and 2 % sucrose.
Preservative:	Sodium azide
Precaution of Use:	This product contains Sodium azide: a POISONOUS AND HAZARDOUS SUBSTANCE which should be handled by trained staff only.
Handling Advice:	Avoid repeated freeze-thaw cycles.

Handling

Storage: -20 °C

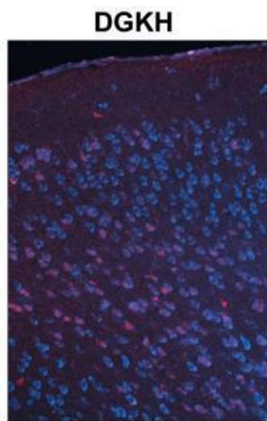
Storage Comment: For short term use, store at 2-8°C up to 1 week. For long term storage, store at -20°C in small aliquots to prevent freeze-thaw cycles.

Images



Western Blotting

Image 1. WB Suggested Anti-DGKH Antibody Titration: 0.2-1 ug/ml ELISA Titer: 1:1562500 Positive Control: Human heart



Red: DGKH Cyan: Nissl (Neurons)

See IHC 1 Data and Customer Feedback for more Information

Immunohistochemistry

Image 2. Sample Type : Adult mouse cortex Primary Antibody Dilution : 1:500 Secondary Antibody : Anti-rabbit-Cy3 Secondary Antibody Dilution : 1:1000 Color/Signal Descriptions : Red: DGKH Cyan: Nissl (Neurons) Gene Name : DGKH Submitted by : Joshua R. Sanes, Molecular and Cellular Biology, Harvard University, 52 Oxford Street, Room 335, Cambridge MA 02138, Phone: 617-496-8683, FAX: 617-495-0524, email: sanesj@mcb.harvard.edu