

Datasheet for ABIN2782361

anti-PRDM15 antibody (Middle Region)[Go to Product page](#)**1** Image

Overview

Quantity:	100 µL
Target:	PRDM15
Binding Specificity:	Middle Region
Reactivity:	Human, Rat, Mouse, Cow, Dog, Guinea Pig
Host:	Rabbit
Clonality:	Polyclonal
Conjugate:	This PRDM15 antibody is un-conjugated
Application:	Western Blotting (WB)

Product Details

Immunogen:	The immunogen is a synthetic peptide directed towards the middle region of human PRDM15
Sequence:	LCGTKVSTRA SMSRHMRRKH PEVLAVRIDD LDHLPETTTI DASSIGIVQP
Predicted Reactivity:	Cow: 100%, Dog: 100%, Guinea Pig: 100%, Human: 100%, Mouse: 100%, Rat: 100%
Characteristics:	This is a rabbit polyclonal antibody against PRDM15. It was validated on Western Blot using a cell lysate as a positive control.
Purification:	Affinity Purified

Target Details

Target:	PRDM15
Alternative Name:	PRDM15 (PRDM15 Products)

Target Details

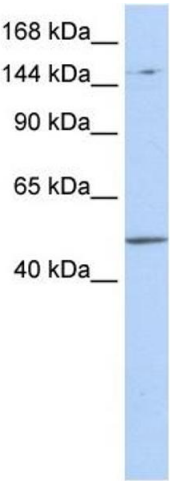
Background:	The exact function of PRDM15 remains unknown. Alias Symbols: C21orf83, PFM15, ZNF298 Protein Size: 1178
Molecular Weight:	134 kDa
Gene ID:	63977
NCBI Accession:	NM_001040424 , NP_001035514
UniProt:	P57071

Application Details

Application Notes:	Optimal working dilutions should be determined experimentally by the investigator.
Comment:	Antigen size: 1178 AA
Restrictions:	For Research Use only

Handling

Format:	Liquid
Concentration:	Lot specific
Buffer:	Liquid. Purified antibody supplied in 1x PBS buffer with 0.09 % (w/v) sodium azide and 2 % sucrose.
Preservative:	Sodium azide
Precaution of Use:	This product contains Sodium azide: a POISONOUS AND HAZARDOUS SUBSTANCE which should be handled by trained staff only.
Handling Advice:	Avoid repeated freeze-thaw cycles.
Storage:	-20 °C
Storage Comment:	For short term use, store at 2-8°C up to 1 week. For long term storage, store at -20°C in small aliquots to prevent freeze-thaw cycles.



Western Blotting

Image 1. WB Suggested Anti-PRDM15 Antibody Titration:
0.2-1 ug/ml ELISA Titer: 1:312500 Positive Control: 293T
cell lysate