

Datasheet for ABIN2782366  
**anti-COL6A1 antibody (Middle Region)**[Go to Product page](#)

## 4 Images

## Overview

Quantity:	100 µL
Target:	COL6A1
Binding Specificity:	Middle Region
Reactivity:	Human, Mouse, Rat, Cow, Dog, Pig, Rabbit, Horse
Host:	Rabbit
Clonality:	Polyclonal
Conjugate:	This COL6A1 antibody is un-conjugated
Application:	Western Blotting (WB)

## Product Details

Immunogen:	The immunogen is a synthetic peptide directed towards the middle region of human COL6A1
Sequence:	ADITILLDGS ASVGSHNFDT TKRFAKRLAE RFLTAGRTDP AHDVRVAVVQ
Predicted Reactivity:	Cow: 93%, Dog: 100%, Horse: 93%, Human: 100%, Mouse: 86%, Pig: 100%, Rabbit: 100%, Rat: 93%
Characteristics:	This is a rabbit polyclonal antibody against COL6A1. It was validated on Western Blot using a cell lysate as a positive control.
Purification:	Affinity Purified

## Target Details

Target:	COL6A1
---------	--------

## Target Details

Alternative Name: COL6A1 ([COL6A1 Products](#))

Background: COL6A1 is a collagen VI which acts as a cell-binding protein. Defects in COL6A1 are a cause of Bethlem myopathy (BM). The collagens are a superfamily of proteins that play a role in maintaining the integrity of various tissues. Collagens are extracellular matrix proteins and have a triple-helical domain as their common structural element. Collagen VI is a major structural component of microfibrils. The basic structural unit of collagen VI is a heterotrimer of the alpha1(VI), alpha2(VI), and alpha3(VI) chains. The alpha2(VI) and alpha3(VI) chains are encoded by the COL6A2 and COL6A3 genes, respectively. The protein encoded by this gene is the alpha 1 subunit of type VI collagen (alpha1(VI) chain). Mutations in the genes that code for the collagen VI subunits result in the autosomal dominant disorder, Bethlem myopathy. Publication Note: This RefSeq record includes a subset of the publications that are available for this gene. Please see the Entrez Gene record to access additional publications. This gene, which encodes a neural small non-messenger RNA, is a member of the family of interspersed repetitive DNA, and its product represents an example of a primate tissue-specific RNA polymerase III transcript. The RNA sequence is divided into three domains: a 5' portion homologous to the Alu Lm, a central adenosine-rich region, and the terminal 43-nt nonrepetitive domain. It is believed that this gene was retropositionally generated and recruited into a function regulating dendritic protein biosynthesis. At least two pseudogenes of this gene have been identified.

PRIMARYREFSEQ\_SPAN PRIMARY\_IDENTIFIER PRIMARY\_SPAN COMP 1-200 AF020057.2  
4262-4461

Alias Symbols: OPLL

Protein Interaction Partner: PDGFB, PDGFA, PDIA3, FBXO6, UBC, VHL, DNAJB11, LGALS3BP, LAMB1, FGF7, COL2A1, MAG, DCN,

Protein Size: 1028

Molecular Weight: 106 kDa

Gene ID: 1291

NCBI Accession: [NM\\_001848](#), [NP\\_001839](#)

UniProt: [P12109](#)

Pathways: [Growth Factor Binding](#), [SARS-CoV-2 Protein Interactome](#)

## Application Details

Application Notes: Optimal working dilutions should be determined experimentally by the investigator.

Comment: Antigen size: 1028 AA

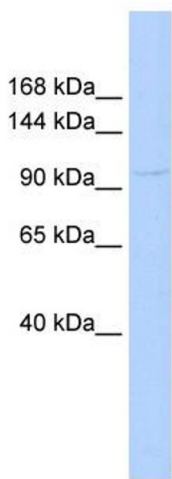
## Application Details

Restrictions: For Research Use only

## Handling

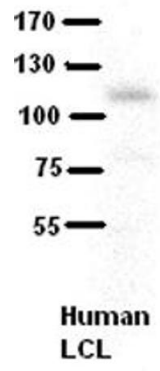
Format:	Liquid
Concentration:	Lot specific
Buffer:	Liquid. Purified antibody supplied in 1x PBS buffer with 0.09 % (w/v) sodium azide and 2 % sucrose.
Preservative:	Sodium azide
Precaution of Use:	This product contains Sodium azide: a POISONOUS AND HAZARDOUS SUBSTANCE which should be handled by trained staff only.
Handling Advice:	Avoid repeated freeze-thaw cycles.
Storage:	-20 °C
Storage Comment:	For short term use, store at 2-8°C up to 1 week. For long term storage, store at -20°C in small aliquots to prevent freeze-thaw cycles.

## Images



**Western Blotting**

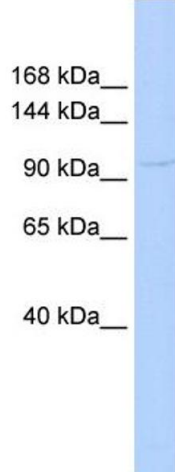
**Image 1.** WB Suggested Anti-COL6A1 Antibody Titration: 0.2-1 ug/ml ELISA Titer: 1:12500 Positive Control: 721\_B cell lysate There is BioGPS gene expression data showing that COL6A1 is expressed in 721\_B



**(ARP45803\_P050)**  
**COL6A1**  
Western Blot  
Human LCL  
Dilution: 1 to 500  
5% Milk  
Application data in forum

Submitted by:  
Katheleen Gardiner  
University of Colorado Denver

**Image 2.**



168 kDa\_\_  
144 kDa\_\_  
90 kDa\_\_  
65 kDa\_\_  
40 kDa\_\_

**Western Blotting**

**Image 3.** WB Suggested Anti-COL6A1  
Antibody Titration: 0.2-1 µg/mL ELISA Titer: 1:12500  
Positive Control: 21\_B cell lysate  
There is BioGPS gene expression data showing that COL6A1 is expressed in 721\_B

Please check the [product details page](#) for more images. Overall 4 images are available for ABIN2782366.