



[Go to Product page](#)

Datasheet for ABIN2782369  
**anti-RRP1 antibody (C-Term)**

4 Images

1 Publication

### Overview

Quantity:	100 µL
Target:	RRP1
Binding Specificity:	C-Term
Reactivity:	Human
Host:	Rabbit
Clonality:	Polyclonal
Conjugate:	This RRP1 antibody is un-conjugated
Application:	Western Blotting (WB), Immunohistochemistry (IHC)

### Product Details

Immunogen:	The immunogen is a synthetic peptide directed towards the C terminal region of human RRP1
Sequence:	IPEKACRRLLEGRRQKKTQKRLRLRLQQRGKGEKEPPSPGMRKRSR
Predicted Reactivity:	Human: 100%
Characteristics:	This is a rabbit polyclonal antibody against RRP1. It was validated on Western Blot and immunohistochemistry.
Purification:	Affinity Purified

### Target Details

Target:	RRP1
Alternative Name:	RRP1 ( <a href="#">RRP1 Products</a> )

## Target Details

---

**Background:** RRP1 is the putative homolog of the yeast ribosomal RNA processing protein RRP1. The protein is involved in the late stages of nucleogenesis at the end of mitosis, and may be required for the generation of 28S rRNA. The protein encoded by this gene is the putative homolog of the yeast ribosomal RNA processing protein RRP1. The encoded protein is involved in the late stages of nucleogenesis at the end of mitosis, and may be required for the generation of 28S rRNA.

Alias Symbols: D21S2056E, NNP-1, NOP52, RRP1A

Protein Interaction Partner: UBC, RNF2, PAN2, WHSC1, BARD1, SIRT7,

Protein Size: 461

---

**Molecular Weight:** 53 kDa

---

**Gene ID:** 8568

---

**NCBI Accession:** [NM\\_003683](#), [NP\\_003674](#)

---

**UniProt:** [P56182](#)

---

## Application Details

---

**Application Notes:** Optimal working dilutions should be determined experimentally by the investigator.

---

**Comment:** Antigen size: 461 AA

---

**Restrictions:** For Research Use only

---

## Handling

---

**Format:** Liquid

---

**Concentration:** Lot specific

---

**Buffer:** Liquid. Purified antibody supplied in 1x PBS buffer with 0.09 % (w/v) sodium azide and 2 % sucrose.

---

**Preservative:** Sodium azide

---

**Precaution of Use:** This product contains Sodium azide: a POISONOUS AND HAZARDOUS SUBSTANCE which should be handled by trained staff only.

---

**Handling Advice:** Avoid repeated freeze-thaw cycles.

---

**Storage:** -20 °C

---

**Storage Comment:** For short term use, store at 2-8°C up to 1 week. For long term storage, store at -20°C in small

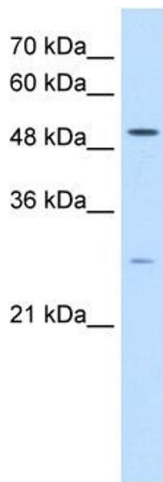
---

aliquots to prevent freeze-thaw cycles.

Publications

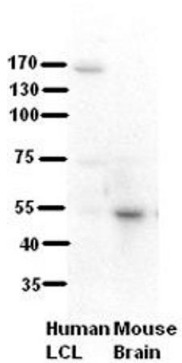
Product cited in: Spellman, Ahmed, Dubach, Gardiner: "Expression of trisomic proteins in Down syndrome model systems." in: **Gene**, Vol. 512, Issue 2, pp. 219-25, (2012) ([PubMed](#)).

Images



Western Blotting

**Image 1.** WB Suggested Anti-RRP1 Antibody Titration: 0.2-1 ug/ml Positive Control: HepG2 cell lysate RRP1 is supported by BioGPS gene expression data to be expressed in HepG2

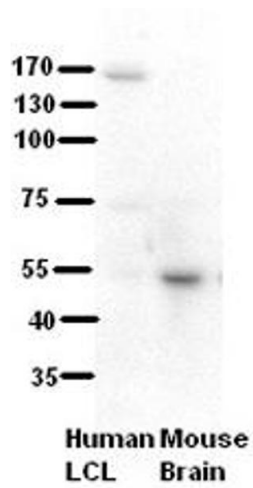


(ARP45812\_P050)  
RRP1

Western Blot  
Human LCL and Mouse Brain  
Dilution: 1 to 500  
5% Milk  
Application data in forum

Submitted by:  
Katheleen Gardiner  
University of Colorado Denver

Image 2.



### Western Blotting

**Image 3.** WB Suggested Anti-RRP1 Antibody Titration: 5%  
Milk ELISA Titer: dilution: 1:500 Positive Control: human LCL  
and mouse brains

Please check the [product details page](#) for more images. Overall 4 images are available for ABIN2782369.