

Datasheet for ABIN2782370  
**anti-PSMG1 antibody (Middle Region)**



[Go to Product page](#)

1 Image

## Overview

Quantity:	100 µL
Target:	PSMG1
Binding Specificity:	Middle Region
Reactivity:	Human, Mouse, Rat, Cow, Dog, Rabbit, Horse, Guinea Pig, Pig
Host:	Rabbit
Clonality:	Polyclonal
Conjugate:	This PSMG1 antibody is un-conjugated
Application:	Western Blotting (WB)

## Product Details

Immunogen:	The immunogen is a synthetic peptide directed towards the middle region of human PSMG1
Sequence:	VMKLDLITVE AFKPILSTRS LKGLVKNIPQ STEILKKLMT TNEIQSNIYT
Predicted Reactivity:	Cow: 100%, Dog: 100%, Guinea Pig: 92%, Horse: 93%, Human: 100%, Mouse: 93%, Pig: 100%, Rabbit: 100%, Rat: 93%
Characteristics:	This is a rabbit polyclonal antibody against PSMG1. It was validated on Western Blot using a cell lysate as a positive control.
Purification:	Affinity Purified

## Target Details

Target:	PSMG1
---------	-------

## Target Details

Alternative Name:	PSMG1 ( <a href="#">PSMG1 Products</a> )
Background:	<p>PSMG1 is a chaperone protein which promotes assembly of the 20S proteasome as part of a heterodimer with PSMG2. The PSMG1-PSMG2 heterodimer binds to the PSMA5 and PSMA7 proteasome subunits, promotes assembly of the proteasome alpha subunits into the heteroheptameric alpha ring and prevents alpha ring dimerization.</p> <p>Alias Symbols: C21LRP, DSCR2, LRPC21, PAC1</p> <p>Protein Interaction Partner: SUMO2, SHFM1, UBC, PSMG3, PSMG2, POMP, PSMG1, PSMA7, PSMA6, PSMA5, PSMA2, EHD4, SEC23A, NOL3, LGALS1, CAPZA2, CAPZA1, APEX1, ACO1, BAG3, FN1, BRCA1, UBD, CUL1, PPARD,</p> <p>Protein Size: 288</p>
Molecular Weight:	33 kDa
Gene ID:	8624
NCBI Accession:	<a href="#">NM_003720</a> , <a href="#">NP_003711</a>
UniProt:	<a href="#">O95456</a>

## Application Details

Application Notes:	Optimal working dilutions should be determined experimentally by the investigator.
Comment:	Antigen size: 288 AA
Restrictions:	For Research Use only

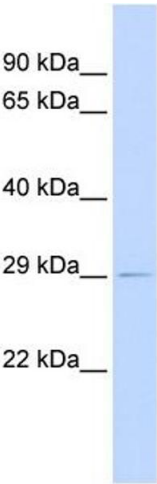
## Handling

Format:	Liquid
Concentration:	Lot specific
Buffer:	Liquid. Purified antibody supplied in 1x PBS buffer with 0.09 % (w/v) sodium azide and 2 % sucrose.
Preservative:	Sodium azide
Precaution of Use:	This product contains Sodium azide: a POISONOUS AND HAZARDOUS SUBSTANCE which should be handled by trained staff only.
Handling Advice:	Avoid repeated freeze-thaw cycles.
Storage:	-20 °C

Handling

Storage Comment: For short term use, store at 2-8°C up to 1 week. For long term storage, store at -20°C in small aliquots to prevent freeze-thaw cycles.

Images



Western Blotting

**Image 1.** WB Suggested Anti-PSMG1 Antibody Titration: 0.2-1 ug/ml ELISA Titer: 1:62500 Positive Control: Human heart