

Datasheet for ABIN2782373
anti-C21orf2 antibody (N-Term)[Go to Product page](#)

4 Images

Overview

Quantity:	100 µL
Target:	C21orf2
Binding Specificity:	N-Term
Reactivity:	Human, Rat, Cow, Guinea Pig, Horse, Mouse, Dog
Host:	Rabbit
Clonality:	Polyclonal
Conjugate:	This C21orf2 antibody is un-conjugated
Application:	Western Blotting (WB)

Product Details

Immunogen:	The immunogen is a synthetic peptide directed towards the N terminal region of human C21orf2
Sequence:	KLTRKMLVLR AKASELHSVR KLNCWGSRLT DISICQEMPS LEVITLSVNS
Predicted Reactivity:	Cow: 100%, Dog: 100%, Guinea Pig: 100%, Horse: 100%, Human: 100%, Mouse: 93%, Rat: 100%
Characteristics:	This is a rabbit polyclonal antibody against C21orf2. It was validated on Western Blot using a cell lysate as a positive control.
Purification:	Affinity Purified

Target Details

Target:	C21orf2
---------	---------

Target Details

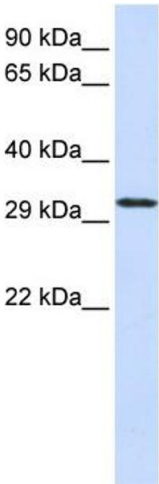
Alternative Name:	C21orf2 (C21orf2 Products)
Background:	<p>The function of the C21orf2 protein remains unknown.</p> <p>Alias Symbols: A2, YF5, YF5/A2</p> <p>Protein Interaction Partner: GMCL1, ATOX1, UBC,</p> <p>Protein Size: 256</p>
Molecular Weight:	28 kDa
Gene ID:	755
NCBI Accession:	NM_004928 , NP_004919
UniProt:	O43822

Application Details

Application Notes:	Optimal working dilutions should be determined experimentally by the investigator.
Comment:	Antigen size: 256 AA
Restrictions:	For Research Use only

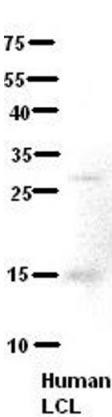
Handling

Format:	Liquid
Concentration:	Lot specific
Buffer:	Liquid. Purified antibody supplied in 1x PBS buffer with 0.09 % (w/v) sodium azide and 2 % sucrose.
Preservative:	Sodium azide
Precaution of Use:	This product contains Sodium azide: a POISONOUS AND HAZARDOUS SUBSTANCE which should be handled by trained staff only.
Handling Advice:	Avoid repeated freeze-thaw cycles.
Storage:	-20 °C
Storage Comment:	For short term use, store at 2-8°C up to 1 week. For long term storage, store at -20°C in small aliquots to prevent freeze-thaw cycles.



Western Blotting

Image 1. WB Suggested Anti-C21orf2 Antibody Titration: 0.2-1 ug/ml ELISA Titer: 1:1562500 Positive Control: 293T cell lysate There is BioGPS gene expression data showing that C21orf2 is expressed in HEK293T



(ARP45819_P050)
Western Blot
Human LCL
Dilution: 1 to 500
5% Milk
Application data in forum

Submitted by:
Katheleen Gardiner
University of Colorado Denver

Image 2.



Western Blotting

Image 3. WB Suggested Anti-C21orf2 Antibody Titration: 0.2-1 µg/mL ELISA Titer: 1:1562500 Positive Control: 93T cell lysate There is BioGPS gene expression data showing that C21orf2 is expressed in HEK293T

Please check the [product details page](#) for more images. Overall 4 images are available for ABIN2782373.