

Datasheet for ABIN2782375
anti-PWP2 antibody (Middle Region)[Go to Product page](#)

4 Images

1 Publication

Overview

Quantity:	100 µL
Target:	PWP2 (PWP2H)
Binding Specificity:	Middle Region
Reactivity:	Human, Mouse, Rat, Cow, Dog, Horse, Guinea Pig
Host:	Rabbit
Clonality:	Polyclonal
Conjugate:	This PWP2 antibody is un-conjugated
Application:	Western Blotting (WB)

Product Details

Immunogen:	The immunogen is a synthetic peptide directed towards the middle region of human PWP2
Sequence:	VQTGSIEGRH DLKTGRKELD KITAKHAAKG KAFTALCYSA DGHSILAGGM
Predicted Reactivity:	Cow: 100%, Dog: 100%, Guinea Pig: 93%, Horse: 100%, Human: 100%, Mouse: 100%, Rat: 100%
Characteristics:	This is a rabbit polyclonal antibody against PWP2. It was validated on Western Blot using a cell lysate as a positive control.
Purification:	Affinity Purified

Target Details

Target:	PWP2 (PWP2H)
Alternative Name:	PWP2 (PWP2H Products)

Target Details

Background:	<p>PWP2 belongs to the WD repeat PWP2 family. It contains 14 WD repeats. The exact function of PWP2 is not known.</p> <p>Alias Symbols: EHOC-17, PWP2H, UTP1</p> <p>Protein Interaction Partner: CUL3, UBC, EED, RNF2, HECW2, TARDBP, MMS19, WDR36, IPO13, RRP9, CUL1, SIRT7, SUMO2, HDGF, USP36, TOM1L1,</p> <p>Protein Size: 919</p>
Molecular Weight:	102 kDa
Gene ID:	5822
NCBI Accession:	NM_005049 , NP_005040
UniProt:	Q15269

Application Details

Application Notes:	Optimal working dilutions should be determined experimentally by the investigator.
Comment:	Antigen size: 919 AA
Restrictions:	For Research Use only

Handling

Format:	Liquid
Concentration:	Lot specific
Buffer:	Liquid. Purified antibody supplied in 1x PBS buffer with 0.09 % (w/v) sodium azide and 2 % sucrose.
Preservative:	Sodium azide
Precaution of Use:	This product contains Sodium azide: a POISONOUS AND HAZARDOUS SUBSTANCE which should be handled by trained staff only.
Handling Advice:	Avoid repeated freeze-thaw cycles.
Storage:	-20 °C
Storage Comment:	For short term use, store at 2-8°C up to 1 week. For long term storage, store at -20°C in small aliquots to prevent freeze-thaw cycles.

Publications

Product cited in: Rayegan, Dehpour, Sharifi: "Studying neuroprotective effect of Atorvastatin as a small molecule drug on high glucose-induced neurotoxicity in undifferentiated PC12 cells: role of NADPH oxidase." in: **Metabolic brain disease**, Vol. 32, Issue 1, pp. 41-49, (2016) ([PubMed](#)).

Kuwano, Kawahara, Yamamoto, Teshima-Kondo, Tominaga, Masuda, Kishi, Morita, Rokutan: " Interferon-gamma activates transcription of NADPH oxidase 1 gene and upregulates production of superoxide anion by human large intestinal epithelial cells." in: **American journal of physiology. Cell physiology**, Vol. 290, Issue 2, pp. C433-43, (2006) ([PubMed](#)).

Images

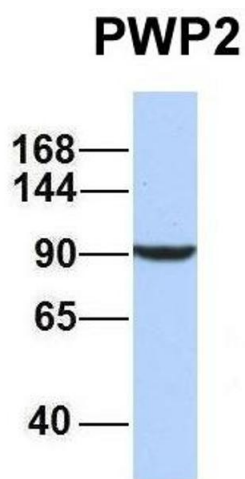


Western Blotting

Image 1. WB Suggested Anti-PWP2 Antibody Titration: 0.2-1 ug/ml ELISA Titer: 1:62500 Positive Control: HepG2 cell lysate

Western Blotting

Image 2. Host: Rabbit Target Name: PWP2 Sample Type: 721_B Antibody Dilution: 1.0ug/ml PWP2 is supported by BioGPS gene expression data to be expressed in 721_B



Western Blotting

Image 3. Host: Rabbit Target Name: PWP2 Sample Type: MCF7 Antibody Dilution: 1.0ug/ml PWP2 is supported by BioGPS gene expression data to be expressed in MCF7

Please check the [product details page](#) for more images. Overall 4 images are available for ABIN2782375.