

Datasheet for ABIN2782380
anti-SUMO3 antibody (N-Term)[Go to Product page](#)

3 Images

Overview

Quantity:	100 µL
Target:	SUMO3
Binding Specificity:	N-Term
Reactivity:	Human, Mouse, Rat, Cow, Rabbit, Zebrafish (Danio rerio), Guinea Pig, Horse, Dog
Host:	Rabbit
Clonality:	Polyclonal
Conjugate:	This SUMO3 antibody is un-conjugated
Application:	Western Blotting (WB)

Product Details

Immunogen:	The immunogen is a synthetic peptide directed towards the N-terminal region of Sumo3
Sequence:	PKEGVKTEND HINLKVAGQD GSVVQFKIKR HTPLSKLMKA YCERQGLSMR
Predicted Reactivity:	Cow: 100%, Dog: 93%, Guinea Pig: 100%, Horse: 100%, Human: 100%, Mouse: 100%, Rabbit: 100%, Rat: 100%, Zebrafish: 100%
Characteristics:	This is a rabbit polyclonal antibody against Sumo3. It was validated on Western Blot.
Purification:	Affinity Purified

Target Details

Target:	SUMO3
Alternative Name:	Sumo3 (SUMO3 Products)

Target Details

Background:	<p>Sumo3 is a ubiquitin-like protein which can be covalently attached to target lysines either as a monomer or as a lysine-linked polymer. It does not seem to be involved in protein degradation and may function as an antagonist of ubiquitin in the degradation process. It plays a role in a number of cellular processes such as nuclear transport, DNA replication and repair, mitosis and signal transduction. Covalent attachment to its substrates requires prior activation by the E1 complex SAE1-SAE2 and linkage to the E2 enzyme UBE2I, and can be promoted by an E3 ligase such as PIAS1-4, RANBP2 or CBX4.</p> <p>Alias Symbols: 2810014B19Rik, AA409334, AW121497, AW536077, D10Ert345e, SMT3A, SUMO-3, Smt3h1, Smt3B</p> <p>Protein Interaction Partner: Ep300, Senp6, Ikbkg, Npm1, Mdm2, Uimc1, Mafg,</p> <p>Protein Size: 110</p>
Molecular Weight:	12 kDa
Gene ID:	20610
NCBI Accession:	NM_019929 , NP_064313
UniProt:	Q9Z172

Application Details

Application Notes:	Optimal working dilutions should be determined experimentally by the investigator.
Comment:	Antigen size: 110 AA
Restrictions:	For Research Use only

Handling

Format:	Liquid
Concentration:	Lot specific
Buffer:	Liquid. Purified antibody supplied in 1x PBS buffer with 0.09 % (w/v) sodium azide and 2 % sucrose.
Preservative:	Sodium azide
Precaution of Use:	This product contains Sodium azide: a POISONOUS AND HAZARDOUS SUBSTANCE which should be handled by trained staff only.
Handling Advice:	Avoid repeated freeze-thaw cycles.
Storage:	-20 °C

Handling

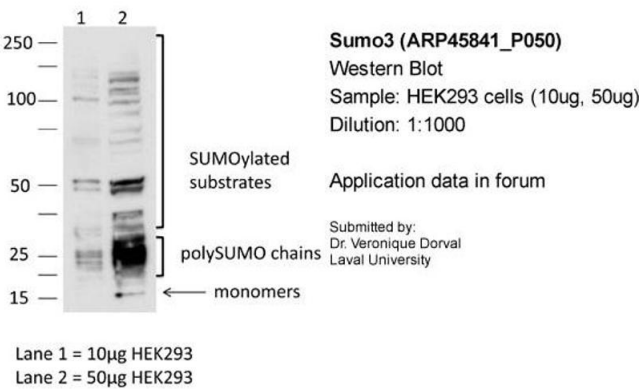
Storage Comment: For short term use, store at 2-8°C up to 1 week. For long term storage, store at -20°C in small aliquots to prevent freeze-thaw cycles.

Images



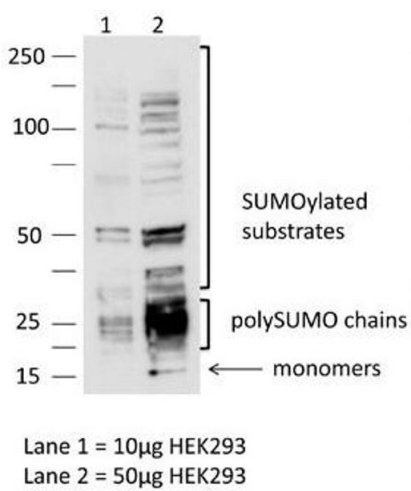
Western Blotting

Image 1. Sumo3 Antibody - N-terminal region validated by WB using Mouse Heart lysate at 1ug/ml.



Western Blotting

Image 2. Sample: HEK293 cells (10ug, 50ug)
Dilution: 1:1000



Western Blotting

Image 3. Sample: HEK293 cells (10ug, 50ug) Dilution : 1:1000