

Datasheet for ABIN2782381
anti-N6AMT1 antibody (N-Term)

3 Images

[Go to Product page](#)

Overview

Quantity:	100 µL
Target:	N6AMT1
Binding Specificity:	N-Term
Reactivity:	Human, Mouse, Rat, Horse, Rabbit, Cow, Guinea Pig
Host:	Rabbit
Clonality:	Polyclonal
Conjugate:	This N6AMT1 antibody is un-conjugated
Application:	Western Blotting (WB)

Product Details

Immunogen:	The immunogen is a synthetic peptide directed towards the N terminal region of human N6AMT1
Sequence:	MAGENFATPF HGHVGRGAFS DVEYPAEDTF LLLNALEAAA AELAGVEICL
Predicted Reactivity:	Cow: 93%, Guinea Pig: 92%, Horse: 100%, Human: 100%, Mouse: 92%, Rabbit: 92%, Rat: 100%
Characteristics:	This is a rabbit polyclonal antibody against N6AMT1. It was validated on Western Blot using a cell lysate as a positive control.
Purification:	Affinity Purified

Target Details

Target:	N6AMT1
---------	--------

Target Details

Alternative Name:	N6AMT1 (N6AMT1 Products)
Background:	<p>The protein encoded by this gene belongs to the methyltransferase superfamily. Alternative splicing occurs at this locus and two transcript variants encoding distinct isoforms have been identified.</p> <p>Alias Symbols: C21orf127, HEMK2, MGC19995, MTQ2, N6AMT, PRED28</p> <p>Protein Interaction Partner: SUP45, SUP35,</p> <p>Protein Size: 186</p>
Molecular Weight:	20 kDa
Gene ID:	29104
NCBI Accession:	NM_182749 , NP_877426
UniProt:	Q96F73

Application Details

Application Notes:	Optimal working dilutions should be determined experimentally by the investigator.
Comment:	Antigen size: 186 AA
Restrictions:	For Research Use only

Handling

Format:	Liquid
Concentration:	Lot specific
Buffer:	Liquid. Purified antibody supplied in 1x PBS buffer with 0.09 % (w/v) sodium azide and 2 % sucrose.
Preservative:	Sodium azide
Precaution of Use:	This product contains Sodium azide: a POISONOUS AND HAZARDOUS SUBSTANCE which should be handled by trained staff only.
Handling Advice:	Avoid repeated freeze-thaw cycles.
Storage:	-20 °C
Storage Comment:	For short term use, store at 2-8°C up to 1 week. For long term storage, store at -20°C in small aliquots to prevent freeze-thaw cycles.

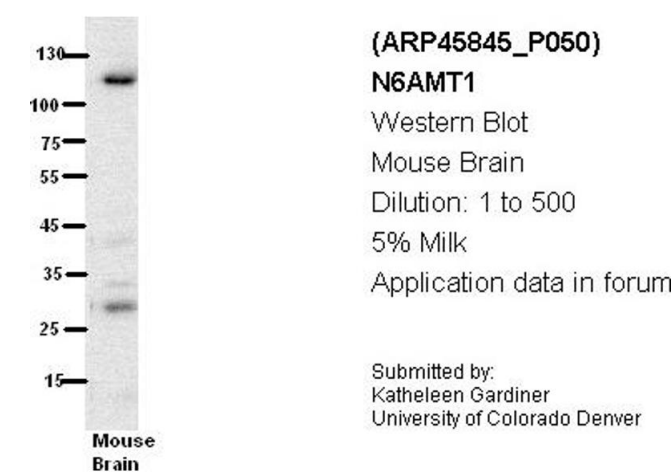
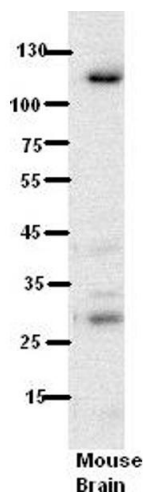
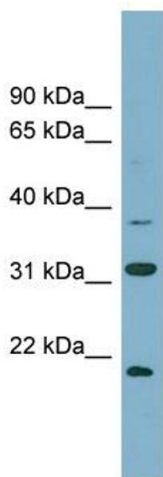


Image 1.



Western Blotting

Image 2. WB Suggested Anti-N6AMT1 Antibody Titration:
5% Milk ELISA Titer: dilution: 1:500 Positive Control: Mouse Brain lysate



Western Blotting

Image 3. WB Suggested Anti-N6AMT1 Antibody Titration:
0.2-1 ug/ml Positive Control: NCI-H226 cell lysate N6AMT1 is supported by BioGPS gene expression data to be expressed in NCIH226