

Datasheet for ABIN2782382
anti-RRP1B antibody (Middle Region)[Go to Product page](#)

4 Images

1 Publication

Overview

Quantity:	100 µL
Target:	RRP1B
Binding Specificity:	Middle Region
Reactivity:	Human, Cow, Dog, Guinea Pig, Horse, Rabbit, Mouse, Rat
Host:	Rabbit
Clonality:	Polyclonal
Conjugate:	This RRP1B antibody is un-conjugated
Application:	Western Blotting (WB)

Product Details

Immunogen:	The immunogen is a synthetic peptide directed towards the middle region of human RRP1B
Sequence:	VTFGLNRNMT AEFKKTDKSI LVSPTGPSRV AFDPEQKPLH GVLKTPTSSP
Predicted Reactivity:	Cow: 100%, Dog: 100%, Guinea Pig: 100%, Horse: 100%, Human: 100%, Mouse: 93%, Rabbit: 100%, Rat: 100%
Characteristics:	This is a rabbit polyclonal antibody against RRP1B. It was validated on Western Blot using a cell lysate as a positive control.
Purification:	Affinity Purified

Target Details

Target:	RRP1B
---------	-------

Target Details

Alternative Name:	RRP1B (RRP1B Products)
Background:	<p>RRP1B belongs to the RRP1 family. It may be a novel susceptibility gene for breast cancer progression and metastasis.</p> <p>Alias Symbols: KIAA0179, Nnp1, RRP1, NNP1L</p> <p>Protein Interaction Partner: TP53, UBC, TARBP2, RNF2, LSM1, SRPK3, MAPK14, CSNK2A2, MPG, PPP1CA, CSNK2A1, APOA1, PPP1CC, ESR1, CUL3, SIRT7, ELAVL1, SUMO2, HDGF, SUMO1, RPL10A, NCL, ILF3, IGKC, HNRNPA1, PARP1, Rrp1b, SLC22A11, LUC7L3, LUC7L2, IGKV2-40, RSL1D1, SDF2L1, LARP1, ALYREF, D</p> <p>Protein Size: 758</p>
Molecular Weight:	84 kDa
Gene ID:	23076
NCBI Accession:	NM_015056 , NP_055871
UniProt:	Q14684

Application Details

Application Notes:	Optimal working dilutions should be determined experimentally by the investigator.
Comment:	Antigen size: 758 AA
Restrictions:	For Research Use only

Handling

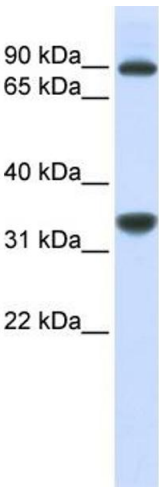
Format:	Liquid
Concentration:	Lot specific
Buffer:	Liquid. Purified antibody supplied in 1x PBS buffer with 0.09 % (w/v) sodium azide and 2 % sucrose.
Preservative:	Sodium azide
Precaution of Use:	This product contains Sodium azide: a POISONOUS AND HAZARDOUS SUBSTANCE which should be handled by trained staff only.
Handling Advice:	Avoid repeated freeze-thaw cycles.
Storage:	-20 °C
Storage Comment:	For short term use, store at 2-8°C up to 1 week. For long term storage, store at -20°C in small

aliquots to prevent freeze-thaw cycles.

Publications

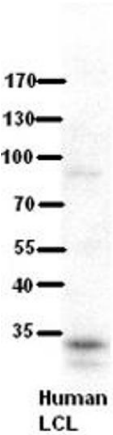
Product cited in: Crawford, Qian, Ziogas, Papageorge, Boersma, Walker, Lukes, Rowe, Zhang, Ambs, Lowy, Anton-Culver, Hunter: "Rrp1b, a new candidate susceptibility gene for breast cancer progression and metastasis." in: **PLoS genetics**, Vol. 3, Issue 11, pp. e214, (2007) ([PubMed](#)).

Images



Western Blotting

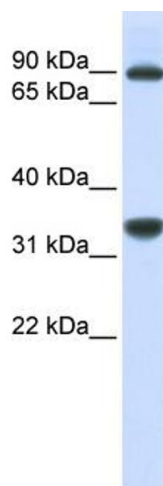
Image 1. WB Suggested Anti-RRP1B Antibody Titration: 0.2-1 ug/ml ELISA Titer: 1:312500 Positive Control: MCF7 cell lysate RRP1B is strongly supported by BioGPS gene expression data to be expressed in Human MCF7 cells



(ARP45850_P050)
RRP1B
Western Blot
Human LCL
Dilution: 1 to 500
5% Milk
Application data in forum

Submitted by:
Katheleen Gardiner
University of Colorado Denver

Image 2.



Western Blotting

Image 3. WB Suggested Anti-RRP1B

Antibody Titration: 0.2-1 µg/mL ELISA Titer: 1:12500

Positive Control: MCF7 cell lysate

RRP1B is strongly supported by BioGPS gene expression data to be expressed in Human MCF7 cells

Please check the [product details page](#) for more images. Overall 4 images are available for ABIN2782382.