

Datasheet for ABIN2782389

anti-C21ORF45 antibody (N-Term)[Go to Product page](#)**1** Image

Overview

Quantity:	100 µL
Target:	C21ORF45 (MIS18A)
Binding Specificity:	N-Term
Reactivity:	Human, Rat, Cow, Dog, Horse, Rabbit
Host:	Rabbit
Clonality:	Polyclonal
Conjugate:	This C21ORF45 antibody is un-conjugated
Application:	Western Blotting (WB)

Product Details

Immunogen:	The immunogen is a synthetic peptide directed towards the N terminal region of human C21orf45
Sequence:	MAGVRSLRCS RGCAGGCECG DKGKCDSSL LGKRLSEDSS RHQLLQKWAS
Predicted Reactivity:	Cow: 100%, Dog: 100%, Horse: 100%, Human: 100%, Rabbit: 100%, Rat: 100%
Characteristics:	This is a rabbit polyclonal antibody against C21orf45. It was validated on Western Blot using a cell lysate as a positive control.
Purification:	Affinity Purified

Target Details

Target:	C21ORF45 (MIS18A)
---------	-------------------

Target Details

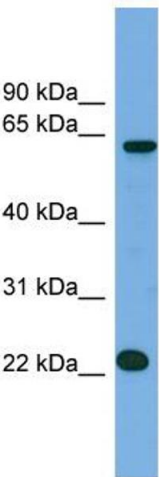
Alternative Name:	C21orf45 (MIS18A Products)
Background:	<p>The function of this protein remains unknown.</p> <p>Alias Symbols: B28, C21orf46, FASP1, MIS18alpha, C21orf45, hMis18alpha</p> <p>Protein Interaction Partner: ZNF471, MBIP, OIP5, BRD8, AIMP2, UBC, MAFIP, NDEL1, TEKT4P2,</p> <p>Protein Size: 233</p>
Molecular Weight:	26 kDa
Gene ID:	54069
NCBI Accession:	NM_018944 , NP_061817
UniProt:	Q9NYP9

Application Details

Application Notes:	Optimal working dilutions should be determined experimentally by the investigator.
Comment:	Antigen size: 233 AA
Restrictions:	For Research Use only

Handling

Format:	Liquid
Concentration:	Lot specific
Buffer:	Liquid. Purified antibody supplied in 1x PBS buffer with 0.09 % (w/v) sodium azide and 2 % sucrose.
Preservative:	Sodium azide
Precaution of Use:	This product contains Sodium azide: a POISONOUS AND HAZARDOUS SUBSTANCE which should be handled by trained staff only.
Handling Advice:	Avoid repeated freeze-thaw cycles.
Storage:	-20 °C
Storage Comment:	For short term use, store at 2-8°C up to 1 week. For long term storage, store at -20°C in small aliquots to prevent freeze-thaw cycles.



Western Blotting

Image 1. WB Suggested Anti-C21orf45 Antibody Titration:
0.2-1 ug/ml ELISA Titer: 1:312500 Positive Control: NCI-H226 cell lysate