



[Go to Product page](#)

Datasheet for ABIN2782399
anti-MRPS6 antibody (C-Term)

3 Images

Overview

Quantity:	100 µL
Target:	MRPS6
Binding Specificity:	C-Term
Reactivity:	Human
Host:	Rabbit
Clonality:	Polyclonal
Conjugate:	This MRPS6 antibody is un-conjugated
Application:	Western Blotting (WB)

Product Details

Immunogen:	The immunogen is a synthetic peptide directed towards the C terminal region of human MRPS6
Sequence:	ESMVEHLSRD IDVIRGNIVK HPLTQELKEC EGIVPVPLAE KLYSTKKRKK
Predicted Reactivity:	Cow: 92%, Dog: 92%, Guinea Pig: 77%, Horse: 85%, Human: 100%, Mouse: 86%, Pig: 92%, Rabbit: 79%, Rat: 86%
Characteristics:	This is a rabbit polyclonal antibody against MRPS6. It was validated on Western Blot.
Purification:	Affinity purified

Target Details

Target:	MRPS6
Alternative Name:	MRPS6 (MRPS6 Products)

Target Details

Background:	<p>Mammalian mitochondrial ribosomal proteins are encoded by nuclear genes and help in protein synthesis within the mitochondrion. Mitochondrial ribosomes (mitoribosomes) consist of a small 28S subunit and a large 39S subunit. They have an estimated 75 % protein to rRNA composition compared to prokaryotic ribosomes, where this ratio is reversed. Another difference between mammalian mitoribosomes and prokaryotic ribosomes is that the latter contain a 5S rRNA. Among different species, the proteins comprising the mitoribosome differ greatly in sequence, and sometimes in biochemical properties, which prevents easy recognition by sequence homology. This gene encodes a 28S subunit protein that belongs to the ribosomal protein S6P family. Pseudogenes corresponding to this gene are found on chromosomes 1p and 12q.</p> <p>Alias Symbols: S6mt, RPMS6, MRP-S6, C21orf101</p> <p>Protein Interaction Partner: MKRN3, SRPK2, ICT1, RNF181, STAT5A, SREBF2, APP, SRRM2, LRIF1, KIAA1377,</p> <p>Protein Size: 125</p>
-------------	--

Molecular Weight:	14 kDa
-------------------	--------

Gene ID:	64968
----------	-------

NCBI Accession:	NM_032476 , NP_115865
-----------------	---

UniProt:	P82932
----------	------------------------

Application Details

Application Notes:	Optimal working dilutions should be determined experimentally by the investigator.
--------------------	--

Comment:	Antigen size: 125 AA
----------	----------------------

Restrictions:	For Research Use only
---------------	-----------------------

Handling

Format:	Liquid
---------	--------

Concentration:	Lot specific
----------------	--------------

Buffer:	Liquid. Purified antibody supplied in 1x PBS buffer with 0.09 % (w/v) sodium azide and 2 % sucrose.
---------	---

Preservative:	Sodium azide
---------------	--------------

Precaution of Use:	This product contains Sodium azide: a POISONOUS AND HAZARDOUS SUBSTANCE which
--------------------	---

Handling

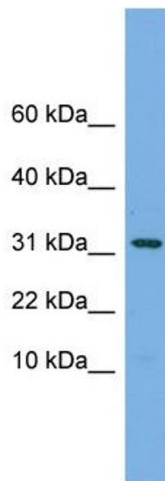
should be handled by trained staff only.

Handling Advice: Avoid repeated freeze-thaw cycles.

Storage: -20 °C

Storage Comment: For short term use, store at 2-8°C up to 1 week. For long term storage, store at -20°C in small aliquots to prevent freeze-thaw cycles.

Images

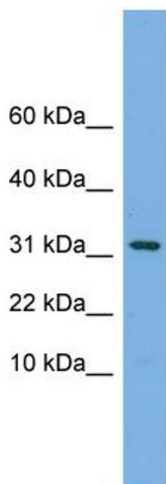


Western Blotting

Image 1. WB Suggested Anti-MRPS6 Antibody Titration:

0.2-1 ug/ml

Positive Control: Jurkat cell lysate



Rabbit Anti-MRPS6 Antibody
Catalog Number: ARP45882
Lot Number: QC29171
Lane: Jurkat Cell Lysate

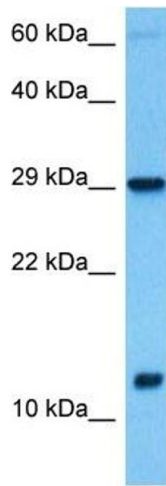
Antibody Titration: 1.0µg/ml
Gel Concentration: 10-20%

Western Blotting

Image 2. WB Suggested Anti-MRPS6

Antibody Titration: 0.2-1 µg/mL

Positive Control: Jurkat cell lysate



Western Blotting

Image 3. Host: Rabbit Target Name: MRPS6 Sample Tissue: Human Testicular Tumor lysates Antibody Dilution: 1ug/ml