



Datasheet for ABIN2782403
anti-C21orf69 antibody (N-Term)



[Go to Product page](#)

1 Image

Overview

Quantity:	100 µL
Target:	C21orf69 (C21orf67)
Binding Specificity:	N-Term
Reactivity:	Human
Host:	Rabbit
Clonality:	Polyclonal
Conjugate:	This C21orf69 antibody is un-conjugated
Application:	Western Blotting (WB)

Product Details

Sequence:	HPPHLGPFVYG YSLRPHPDLL KERPHGKDSA TCSFISPQWV PRHEDHRLEA
Characteristics:	This is a rabbit polyclonal antibody against C21orf69. It was validated on Western Blot.
Purification:	Affinity Purified

Target Details

Target:	C21orf69 (C21orf67)
Alternative Name:	C21orf69 (C21orf67 Products)
Background:	The function of this protein remains unknown. Alias Symbols: - Protein Size: 163

Target Details

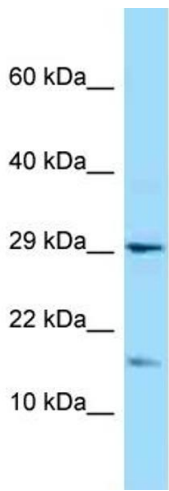
Molecular Weight:	18 kDa
Gene ID:	84537
NCBI Accession:	NM_058189 , NP_478069
UniProt:	F6YB15

Application Details

Application Notes:	Optimal working dilutions should be determined experimentally by the investigator.
Comment:	Antigen size: 163 AA
Restrictions:	For Research Use only

Handling

Format:	Liquid
Concentration:	Lot specific
Buffer:	Liquid. Purified antibody supplied in 1x PBS buffer with 0.09 % (w/v) sodium azide and 2 % sucrose.
Preservative:	Sodium azide
Precaution of Use:	This product contains Sodium azide: a POISONOUS AND HAZARDOUS SUBSTANCE which should be handled by trained staff only.
Handling Advice:	Avoid repeated freeze-thaw cycles.
Storage:	-20 °C
Storage Comment:	For short term use, store at 2-8°C up to 1 week. For long term storage, store at -20°C in small aliquots to prevent freeze-thaw cycles.



Rabbit Anti-C21orf69 Antibody
Catalog Number: ARP45894
Lot Number: QC29178
Lane: HeLa Cell Lysate

Antibody Titration: 1.0µg/ml
Gel Concentration: 10-20%

Western Blotting

Image 1.