

Datasheet for ABIN2782411
anti-LCA5L antibody (N-Term)

3 Images

1 Publication

[Go to Product page](#)

Overview

Quantity:	100 µL
Target:	LCA5L
Binding Specificity:	N-Term
Reactivity:	Human, Saccharomyces cerevisiae
Host:	Rabbit
Clonality:	Polyclonal
Conjugate:	This LCA5L antibody is un-conjugated
Application:	Western Blotting (WB)

Product Details

Immunogen:	The immunogen is a synthetic peptide directed towards the N terminal region of human C21orf13
Sequence:	SLADLTKTNI DEHFFGVALE NNRRSAACKR SPGTGDFSRN SNASNKSVDY
Predicted Reactivity:	Human: 100%, Yeast: 75%
Characteristics:	This is a rabbit polyclonal antibody against C21orf13. It was validated on Western Blot using a cell lysate as a positive control.
Purification:	Affinity Purified

Target Details

Target:	LCA5L
---------	-------

Target Details

Alternative Name:	C21orf13 (LCA5L Products)
Background:	The function of the C21orf13 protein remains unknown. Alias Symbols: MGC33295, C21orf13 Protein Interaction Partner: TFIP11, NMI, TPM3, SUV39H2, Protein Size: 670
Molecular Weight:	76 kDa
Gene ID:	150082
NCBI Accession:	NM_152505 , NP_689718
UniProt:	O95447

Application Details

Application Notes:	Optimal working dilutions should be determined experimentally by the investigator.
Comment:	Antigen size: 670 AA
Restrictions:	For Research Use only

Handling

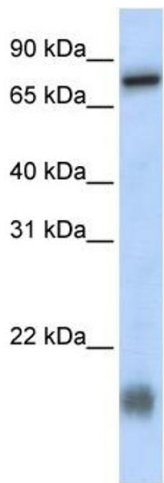
Format:	Liquid
Concentration:	Lot specific
Buffer:	Liquid. Purified antibody supplied in 1x PBS buffer with 0.09 % (w/v) sodium azide and 2 % sucrose.
Preservative:	Sodium azide
Precaution of Use:	This product contains Sodium azide: a POISONOUS AND HAZARDOUS SUBSTANCE which should be handled by trained staff only.
Handling Advice:	Avoid repeated freeze-thaw cycles.
Storage:	-20 °C
Storage Comment:	For short term use, store at 2-8°C up to 1 week. For long term storage, store at -20°C in small aliquots to prevent freeze-thaw cycles.

Publications

Product cited in:	Spellman, Ahmed, Dubach, Gardiner: "Expression of trisomic proteins in Down syndrome model
-------------------	--

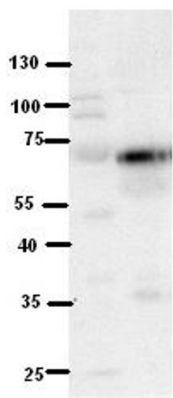
systems." in: **Gene**, Vol. 512, Issue 2, pp. 219-25, (2012) ([PubMed](#)).

Images



Western Blotting

Image 1. WB Suggested Anti-C21orf13 Antibody Titration:
0.2-1 ug/ml ELISA Titer: 1:1562500 Positive Control: MCF7
cell lysate



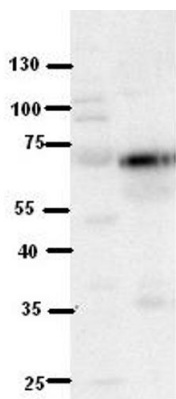
(ARP45912_P050)

Western Blot
Mouse Brain
Dilution: 1 to 500
5% Milk
Application data in forum

Image 2.

Submitted by:
Katheleen Gardiner
University of Colorado Denver

Mouse
Brain
C21orf13- 76 kDa



Mouse
Brain
C21orf13- 76 kDa

Western Blotting

Image 3. WB Suggested Anti-C21orf13 Antibody Titration:
5% Milk ELISA Titer: dilution: 1:500 Positive Control: Mouse
Brain lysate