

Datasheet for ABIN2782422
anti-MEMO1 antibody (N-Term)[Go to Product page](#)

1 Image

Overview

Quantity:	100 µL
Target:	MEMO1
Binding Specificity:	N-Term
Reactivity:	Human, Mouse, Rat, Cow, Rabbit, Horse, Dog, Guinea Pig
Host:	Rabbit
Clonality:	Polyclonal
Conjugate:	This MEMO1 antibody is un-conjugated
Application:	Western Blotting (WB)

Product Details

Immunogen:	The immunogen is a synthetic peptide directed towards the N terminal region of human LOC100047915
Sequence:	SGPQLNAQLE GWLSQVQSTK RPARAIAPH AGYTYCGSCA AHAYKQVDPS
Predicted Reactivity:	Cow: 100%, Dog: 100%, Guinea Pig: 100%, Horse: 100%, Human: 100%, Mouse: 100%, Rabbit: 100%, Rat: 100%
Characteristics:	This is a rabbit polyclonal antibody against LOC100047915. It was validated on Western Blot.
Purification:	Affinity Purified

Target Details

Target:	MEMO1
---------	-------

Target Details

Abstract:	MEMO1 Products
Background:	The function remains unknown. Alias Symbols: - Protein Size: 339
Molecular Weight:	38 kDa
Gene ID:	100047915
NCBI Accession:	XM_001479122 , XP_001479172

Application Details

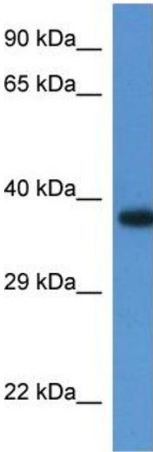
Application Notes:	Optimal working dilutions should be determined experimentally by the investigator.
Comment:	Antigen size: 339 AA
Restrictions:	For Research Use only

Handling

Format:	Liquid
Concentration:	Lot specific
Buffer:	Liquid. Purified antibody supplied in 1x PBS buffer with 0.09 % (w/v) sodium azide and 2 % sucrose.
Preservative:	Sodium azide
Precaution of Use:	This product contains Sodium azide: a POISONOUS AND HAZARDOUS SUBSTANCE which should be handled by trained staff only.
Handling Advice:	Avoid repeated freeze-thaw cycles.
Storage:	-20 °C
Storage Comment:	For short term use, store at 2-8°C up to 1 week. For long term storage, store at -20°C in small aliquots to prevent freeze-thaw cycles.

Western Blotting

Image 1.



Rabbit Anti-LOC100047915 Antibody
Catalog Number: ARP45967
Lot Number: QC15465
Lane: Mouse Kidney Lysate

Antibody Titration: 1.0µg/ml
Gel Concentration: 12%