

Datasheet for ABIN2782430
anti-GUCY1B3 antibody (N-Term)[Go to Product page](#)

2 Images

Overview

Quantity:	100 µL
Target:	GUCY1B3
Binding Specificity:	N-Term
Reactivity:	Human, Mouse, Rat, Dog, Cow, Guinea Pig, Rabbit, Zebrafish (Danio rerio), Horse
Host:	Rabbit
Clonality:	Polyclonal
Conjugate:	This GUCY1B3 antibody is un-conjugated
Application:	Western Blotting (WB)

Product Details

Immunogen:	The immunogen is a synthetic peptide directed towards the N terminal region of human GUCY1B3
Sequence:	LIEEKESKEE DFYEDLDRFE ENGTQESRIS PYTFCKAFPF HIIFDRDLVV
Predicted Reactivity:	Cow: 100%, Dog: 100%, Guinea Pig: 100%, Horse: 100%, Human: 100%, Mouse: 100%, Rabbit: 100%, Rat: 100%, Zebrafish: 92%
Characteristics:	This is a rabbit polyclonal antibody against GUCY1B3. It was validated on Western Blot using a cell lysate as a positive control.
Purification:	Affinity Purified

Target Details

Target:	GUCY1B3
---------	---------

Target Details

Alternative Name:	GUCY1B3 (GUCY1B3 Products)
Background:	<p>Soluble guanylate cyclase (sGC), a heterodimeric protein consisting of an alpha subunit and a beta subunit, typically GUCY1B3, catalyzes conversion of GTP to the second messenger cGMP and functions as the main receptor for nitric oxide (NO) and nitrovasodilator drugs (Zabel et al., 1998 [PubMed 9742212]). Soluble guanylate cyclase (sGC), a heterodimeric protein consisting of an alpha subunit and a beta subunit, typically GUCY1B3, catalyzes conversion of GTP to the second messenger cGMP and functions as the main receptor for nitric oxide (NO) and nitrovasodilator drugs (Zabel et al., 1998 [PubMed 9742212]). [supplied by OMIM].</p> <p>Alias Symbols: GC-S-beta-1, GC-SB3, GUC1B3, GUCB3, GUCSB3, GUCY1B1</p> <p>Protein Interaction Partner: APP, STUB1, UBC, AGAP1, GUCY1A2, HSP90AA1, NOS3,</p> <p>Protein Size: 619</p>
Molecular Weight:	70 kDa
Gene ID:	2983
NCBI Accession:	NM_000857 , NP_000848
UniProt:	Q02153
Pathways:	Transition Metal Ion Homeostasis

Application Details

Application Notes:	Optimal working dilutions should be determined experimentally by the investigator.
Comment:	Antigen size: 619 AA
Restrictions:	For Research Use only

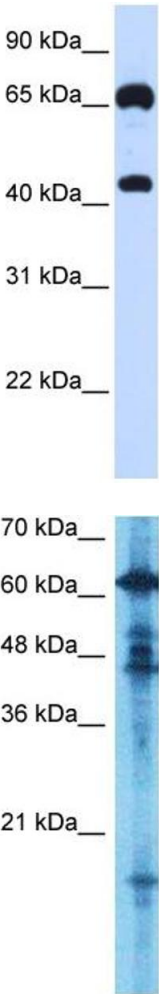
Handling

Format:	Liquid
Concentration:	Lot specific
Buffer:	Liquid. Purified antibody supplied in 1x PBS buffer with 0.09 % (w/v) sodium azide and 2 % sucrose.
Preservative:	Sodium azide
Precaution of Use:	This product contains Sodium azide: a POISONOUS AND HAZARDOUS SUBSTANCE which should be handled by trained staff only.

Handling

Handling Advice:	Avoid repeated freeze-thaw cycles.
Storage:	-20 °C
Storage Comment:	For short term use, store at 2-8°C up to 1 week. For long term storage, store at -20°C in small aliquots to prevent freeze-thaw cycles.

Images



Western Blotting

Image 1. WB Suggested Anti-GUCY1B3 Antibody Titration: 0.2-1 ug/ml ELISA Titer: 1:12500 Positive Control: 293T cell lysate GUCY1B3 is supported by BioGPS gene expression data to be expressed in HEK293T

Western Blotting

Image 2. Host: Rabbit Target Name: GCYB1 Sample Type: Fetal Brain lysates Antibody Dilution: 0.5ug/ml