

Datasheet for ABIN2782435  
**anti-ACTR2 antibody (Middle Region)**



[Go to Product page](#)

2 Images

## Overview

Quantity:	100 µL
Target:	ACTR2
Binding Specificity:	Middle Region
Reactivity:	Human, Mouse, Rat, Dog, Cow, Guinea Pig, Horse, Rabbit, Zebrafish (Danio rerio), Saccharomyces cerevisiae
Host:	Rabbit
Clonality:	Polyclonal
Conjugate:	This ACTR2 antibody is un-conjugated
Application:	Western Blotting (WB)

## Product Details

Immunogen:	The immunogen is a synthetic peptide directed towards the middle region of human ACTR2
Sequence:	RELKQLYLER VLKGDVEKLS KFKIRIEDPP RRKHMVFLGG AVLADIMKDK
Predicted Reactivity:	Cow: 100%, Dog: 100%, Guinea Pig: 100%, Horse: 100%, Human: 100%, Mouse: 100%, Rabbit: 100%, Rat: 100%, Yeast: 92%, Zebrafish: 100%
Characteristics:	This is a rabbit polyclonal antibody against ACTR2. It was validated on Western Blot using a cell lysate as a positive control.
Purification:	Affinity Purified

## Target Details

Target:	ACTR2
---------	-------

## Target Details

Alternative Name:	ACTR2 ( <a href="#">ACTR2 Products</a> )
Background:	<p>ACTR2 is known to be a major constituent of the ARP2/3 complex. This complex is located at the cell surface and is essential to cell shape and motility through lamellipodial actin assembly and protrusion. The specific function of this gene has not yet been determined, however, the protein it encodes is known to be a major constituent of the ARP2/3 complex. This complex is located at the cell surface and is essential to cell shape and motility through lamellipodial actin assembly and protrusion. Two transcript variants encoding different isoforms have been found for this gene.</p> <p>Alias Symbols: ARP2</p> <p>Protein Interaction Partner: UBC, SUMO2, SURF2, SRP9, SH3GL1, RPA1, RANGAP1, PRKACB, METTL1, DHPS, CALU, CALR, BAG1, ALAD, TPD52L2, TP53RK, GRPEL1, EFTUD1, P3H1, NIF3L1, RPRD1B, OSGEP, PANK4, RPRD1A, NSUN2, UFM1, PPME1, SH3GLB1, TPRKB, EEF2K, KIAA1279, HSPBP1, TTLL12, WDR4, ANP32B, C</p> <p>Protein Size: 399</p>
Molecular Weight:	45 kDa
Gene ID:	10097
NCBI Accession:	<a href="#">NM_001005386</a> , <a href="#">NP_001005386</a>
UniProt:	<a href="#">B2RCP5</a>
Pathways:	<a href="#">RTK Signaling</a> , <a href="#">Regulation of Actin Filament Polymerization</a>

## Application Details

Application Notes:	Optimal working dilutions should be determined experimentally by the investigator.
Comment:	Antigen size: 399 AA
Restrictions:	For Research Use only

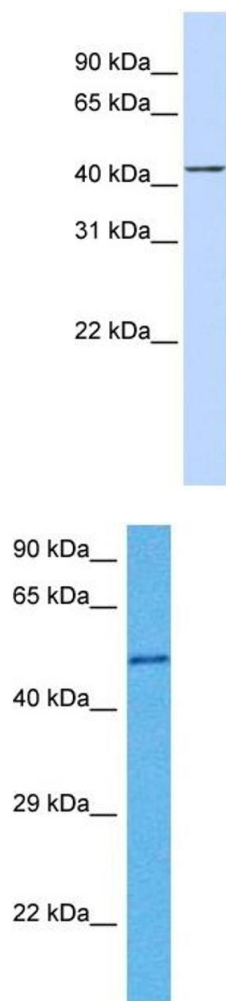
## Handling

Format:	Liquid
Concentration:	Lot specific
Buffer:	Liquid. Purified antibody supplied in 1x PBS buffer with 0.09 % (w/v) sodium azide and 2 % sucrose.
Preservative:	Sodium azide

Handling

Precaution of Use:	This product contains Sodium azide: a POISONOUS AND HAZARDOUS SUBSTANCE which should be handled by trained staff only.
Handling Advice:	Avoid repeated freeze-thaw cycles.
Storage:	-20 °C
Storage Comment:	For short term use, store at 2-8°C up to 1 week. For long term storage, store at -20°C in small aliquots to prevent freeze-thaw cycles.

Images



Western Blotting

**Image 1.** WB Suggested Anti-ACTR2 Antibody Titration: 0.2-1 ug/ml ELISA Titer: 1:1562500 Positive Control: 721\_B cell lysate ACTR2 is strongly supported by BioGPS gene expression data to be expressed in Human 721\_B cells

Western Blotting

**Image 2.** Host: Mouse Target Name: ACTR2 Sample Tissue: Mouse Testis Antibody Dilution: 1ug/ml