

Datasheet for ABIN2782441

anti-RRM2B antibody (Middle Region)[Go to Product page](#)**1** Image

Overview

Quantity:	100 µL
Target:	RRM2B
Binding Specificity:	Middle Region
Reactivity:	Human, Rat, Mouse, Cow, Rabbit, Horse, Pig, Dog, Guinea Pig, Saccharomyces cerevisiae, Zebrafish (Danio rerio)
Host:	Rabbit
Clonality:	Polyclonal
Conjugate:	This RRM2B antibody is un-conjugated
Application:	Western Blotting (WB)

Product Details

Immunogen:	The immunogen is a synthetic peptide directed towards the middle region of Human RRM2B
Sequence:	VHSEMYSLLI DTYIRDPKKR EFLFNAIETM PYVKKKADWA LRWIADRKST
Predicted Reactivity:	Cow: 93%, Dog: 93%, Guinea Pig: 86%, Horse: 93%, Human: 100%, Mouse: 93%, Pig: 93%, Rabbit: 100%, Rat: 93%, Yeast: 93%, Zebrafish: 93%
Characteristics:	This is a rabbit polyclonal antibody against RRM2B. It was validated on Western Blot.
Purification:	Affinity Purified

Target Details

Target:	RRM2B
---------	-------

Target Details

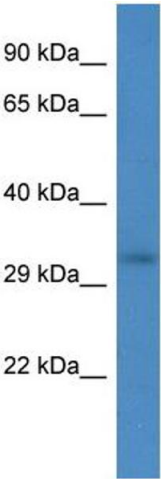
Alternative Name:	RRM2B (RRM2B Products)
Background:	<p>This gene encodes the small subunit of a p53-inducible ribonucleotide reductase. This heterotetrameric enzyme catalyzes the conversion of ribonucleoside diphosphates to deoxyribonucleoside diphosphates. The product of this reaction is necessary for DNA synthesis. Mutations in this gene have been associated with autosomal recessive mitochondrial DNA depletion syndrome, autosomal dominant progressive external ophthalmoplegia-5, and mitochondrial neurogastrointestinal encephalopathy. Alternatively spliced transcript variants have been described.</p> <p>Protein Interaction Partner: RRM2B, ORC4, UBC, AICDA, RRM1, TP53, RRM2, MDM2, ATM, ZBTB17, MYC,</p> <p>Protein Size: 299</p>
Molecular Weight:	32 kDa
Gene ID:	50484
Pathways:	p53 Signaling , Negative Regulation of intrinsic apoptotic Signaling

Application Details

Application Notes:	Optimal working dilution should be determined by the investigator.
Restrictions:	For Research Use only

Handling

Format:	Liquid
Concentration:	1 mg/mL
Buffer:	Liquid. Purified antibody supplied in 1x PBS buffer with 0.09 % (w/v) sodium azide and 2 % sucrose.
Preservative:	Sodium azide
Precaution of Use:	This product contains Sodium azide: a POISONOUS AND HAZARDOUS SUBSTANCE which should be handled by trained staff only.
Handling Advice:	Avoid repeat freeze-thaw cycles.
Storage:	-20 °C
Storage Comment:	For short term use, store at 2-8°C up to 1 week. For long term storage, store at -20°C in small aliquots to prevent freeze-thaw cycles.



Western Blotting

Image 1. Host: Rabbit Target Name: RRM2B Sample Type: 293T Whole cell lysates Antibody Dilution: 1.0ug/ml