

Datasheet for ABIN2782456
anti-EIF1AX antibody (Middle Region)[Go to Product page](#)

1 Image

Overview

Quantity:	100 µL
Target:	EIF1AX
Binding Specificity:	Middle Region
Reactivity:	Human, Mouse, Rat, Cow, Dog, Guinea Pig, Horse, Rabbit, Sheep, Zebrafish (Danio rerio), Saccharomyces cerevisiae
Host:	Rabbit
Clonality:	Polyclonal
Conjugate:	This EIF1AX antibody is un-conjugated
Application:	Western Blotting (WB)

Product Details

Immunogen:	The immunogen is a synthetic peptide directed towards the middle region of human EIF1AX
Sequence:	KYNADEARSL KAYGELPEHA KINETDTFGP GDDDEIQFDD IGDDDEDIDD
Predicted Reactivity:	Cow: 100%, Dog: 100%, Guinea Pig: 100%, Horse: 100%, Human: 100%, Mouse: 100%, Rabbit: 100%, Rat: 100%, Sheep: 100%, Yeast: 92%, Zebrafish: 100%
Characteristics:	This is a rabbit polyclonal antibody against EIF1AX. It was validated on Western Blot using a cell lysate as a positive control.
Purification:	Affinity Purified

Target Details

Target:	EIF1AX
---------	--------

Target Details

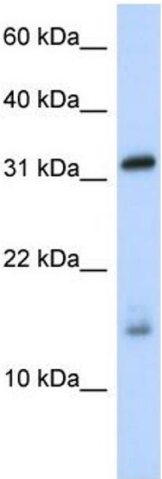
Alternative Name:	EIF1AX (EIF1AX Products)
Background:	<p>This gene encodes an essential eukaryotic translation initiation factor. The protein is required for the binding of the 43S complex (a 40S subunit, eIF2/GTP/Met-tRNAi and eIF3) to the 5' end of capped RNA.</p> <p>Alias Symbols: EIF1A, EIF4C, eIF-1A, eIF-4C, EIF1AP1</p> <p>Protein Interaction Partner: UBC, ADSL, FLII, APP, ELAVL1, DCC, IKBKG, IPO13, EIF5B, EIF3C, EIF2S1, EIF5,</p> <p>Protein Size: 144</p>
Molecular Weight:	16 kDa
Gene ID:	1964
NCBI Accession:	NM_001412 , NP_001403
UniProt:	P47813

Application Details

Application Notes:	Optimal working dilutions should be determined experimentally by the investigator.
Comment:	Antigen size: 144 AA
Restrictions:	For Research Use only

Handling

Format:	Liquid
Concentration:	Lot specific
Buffer:	Liquid. Purified antibody supplied in 1x PBS buffer with 0.09 % (w/v) sodium azide and 2 % sucrose.
Preservative:	Sodium azide
Precaution of Use:	This product contains Sodium azide: a POISONOUS AND HAZARDOUS SUBSTANCE which should be handled by trained staff only.
Handling Advice:	Avoid repeated freeze-thaw cycles.
Storage:	-20 °C
Storage Comment:	For short term use, store at 2-8°C up to 1 week. For long term storage, store at -20°C in small aliquots to prevent freeze-thaw cycles.



Western Blotting

Image 1. WB Suggested Anti-EIF1AX Antibody Titration: 0.2-1 ug/ml ELISA Titer: 1:2500 Positive Control: Human brain