

Datasheet for ABIN2782465  
**anti-CTP Synthase antibody (N-Term)**

## 4 Images

[Go to Product page](#)

## Overview

Quantity:	100 µL
Target:	CTP Synthase (CTPS)
Binding Specificity:	N-Term
Reactivity:	Human, Mouse, Rat, Cow, Dog, Guinea Pig, Horse, Rabbit, Zebrafish (Danio rerio)
Host:	Rabbit
Clonality:	Polyclonal
Conjugate:	This CTP Synthase antibody is un-conjugated
Application:	Western Blotting (WB), Immunohistochemistry (IHC)

## Product Details

Immunogen:	The immunogen is a synthetic peptide directed towards the N terminal region of human CTPS
Sequence:	SMPFIEAFRQ FQFKVKRENF CNIHVSLVPQ PSSTGEQKTK PTQNSVREL R
Predicted Reactivity:	Cow: 100%, Dog: 100%, Guinea Pig: 100%, Horse: 100%, Human: 100%, Mouse: 100%, Rabbit: 100%, Rat: 100%, Zebrafish: 93%
Characteristics:	This is a rabbit polyclonal antibody against CTPS. It was validated on Western Blot and immunohistochemistry.
Purification:	Protein A purified

## Target Details

Target:	CTP Synthase (CTPS)
---------	---------------------

## Target Details

Alternative Name:	CTPS ( <a href="#">CTPS Products</a> )
Background:	<p>The catalytic conversion of UTP to CTP is accomplished by the enzyme cytidine-5-prime-triphosphate synthetase. The enzyme is important in the biosynthesis of phospholipids and nucleic acids, and plays a key role in cell growth, development, and tumorigenesis. The catalytic conversion of UTP to CTP is accomplished by the enzyme cytidine-5-prime-triphosphate synthetase. The enzyme is important in the biosynthesis of phospholipids and nucleic acids, and plays a key role in cell growth, development, and tumorigenesis. The region to which the CTPS gene has been mapped is the location of breakpoints involved in several tumor types. The catalytic conversion of UTP to CTP is accomplished by the enzyme cytidine-5-prime-triphosphate synthetase. The enzyme is important in the biosynthesis of phospholipids and nucleic acids, and plays a key role in cell growth, development, and tumorigenesis. The region to which the CTPS gene has been mapped is the location of breakpoints involved in several tumor types.</p> <p>Alias Symbols: CTPS</p> <p>Protein Interaction Partner: UBC, CTPS1, TUBGCP3, AURKA, SUMO2, SUMO3, SUMO1, NEDD8, DCTPP1, GINS3, UBA6, UBXN1, PAPSS1, VCL, UBA1, PPP5C, PKM, DFFA, CS, CLNS1A, ACO1, YWHAQ, MYC, RBM28, POLR1C, FBXO6, CAND1, COPS5, CUL1, CUL2, CUL3, CUL4B, CUL5, CDK2, ARRB2, RAD21, PSMA3, YWHAG, TRA</p> <p>Protein Size: 591</p>
Molecular Weight:	67 kDa
Gene ID:	1503
NCBI Accession:	<a href="#">NM_001905</a> , <a href="#">NP_001896</a>
UniProt:	<a href="#">P17812</a>
Pathways:	<a href="#">Proton Transport</a> , <a href="#">Ribonucleoside Biosynthetic Process</a>

## Application Details

Application Notes:	Optimal working dilutions should be determined experimentally by the investigator.
Comment:	Antigen size: 591 AA
Restrictions:	For Research Use only

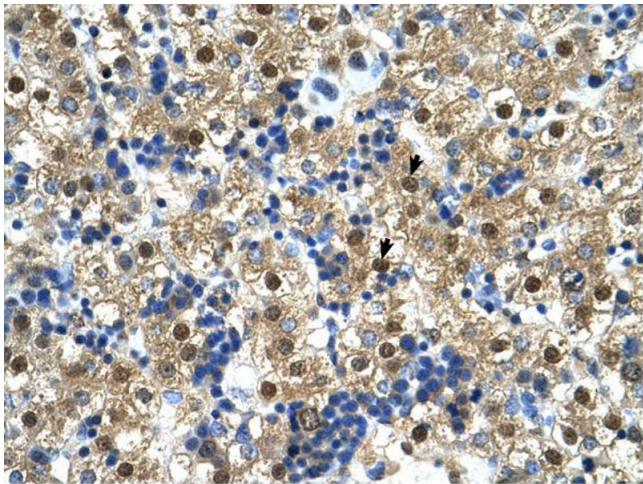
## Handling

Format:	Liquid
---------	--------

## Handling

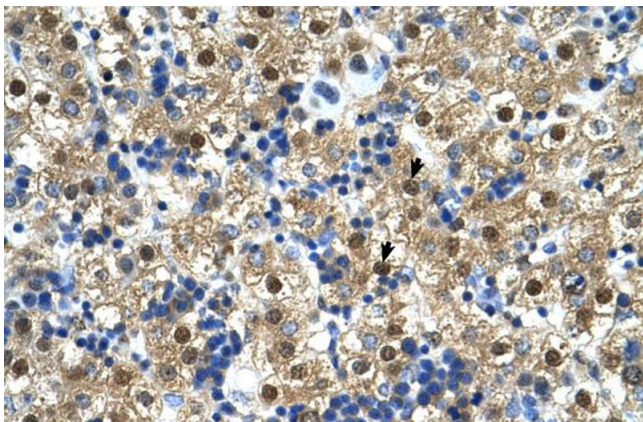
Concentration:	Lot specific
Buffer:	Liquid. Purified antibody supplied in 1x PBS buffer with 0.09 % (w/v) sodium azide and 2 % sucrose.
Preservative:	Sodium azide
Precaution of Use:	This product contains Sodium azide: a POISONOUS AND HAZARDOUS SUBSTANCE which should be handled by trained staff only.
Handling Advice:	Avoid repeated freeze-thaw cycles.
Storage:	-20 °C
Storage Comment:	For short term use, store at 2-8°C up to 1 week. For long term storage, store at -20°C in small aliquots to prevent freeze-thaw cycles.

## Images



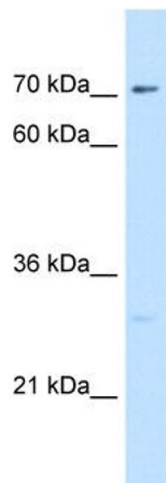
### Immunohistochemistry

**Image 1.**



### Immunohistochemistry

**Image 2.** Human Liver



**Western Blotting**

**Image 3.** WB Suggested Antibody Titration: 5.0ug/ml  
Positive Control: 721B CTPS1 is supported by BioGPS gene expression data to be expressed in 721\_B

Please check the [product details page](#) for more images. Overall 4 images are available for ABIN2782465.