

Datasheet for ABIN2782470  
**anti-MX1 antibody (C-Term)**[Go to Product page](#)

4 Images

1 Publication

## Overview

Quantity:	100 µL
Target:	MX1
Binding Specificity:	C-Term
Reactivity:	Human, Mouse, Rat, Cow, Pig, Horse, Rabbit, Sheep, Dog, Guinea Pig
Host:	Rabbit
Clonality:	Polyclonal
Conjugate:	This MX1 antibody is un-conjugated
Application:	Western Blotting (WB)

## Product Details

Immunogen:	The immunogen is a synthetic peptide directed towards the C terminal region of human MX1
Sequence:	KAMLQLLQDK DTYSWLLKER SDTSDKRKFL KERLARLTQA RRRLAQFPG
Predicted Reactivity:	Cow: 86%, Dog: 100%, Guinea Pig: 93%, Horse: 86%, Human: 100%, Mouse: 86%, Pig: 100%, Rabbit: 86%, Rat: 93%, Sheep: 86%
Characteristics:	This is a rabbit polyclonal antibody against MX1. It was validated on Western Blot using a cell lysate as a positive control.
Purification:	Affinity Purified

## Target Details

Target:	MX1
---------	-----

## Target Details

Alternative Name:	MX1 ( <a href="#">MX1 Products</a> )
Background:	<p>In mouse, the interferon-inducible Mx protein is responsible for a specific antiviral state against influenza virus infection. MX1 is similar to the mouse protein as determined by its antigenic relatedness, induction conditions, physicochemical properties, and amino acid analysis. This cytoplasmic protein is a member of both the dynamin family and the family of large GTPases. In mouse, the interferon-inducible Mx protein is responsible for a specific antiviral state against influenza virus infection. The protein encoded by this gene is similar to the mouse protein as determined by its antigenic relatedness, induction conditions, physicochemical properties, and amino acid analysis. This cytoplasmic protein is a member of both the dynamin family and the family of large GTPases. Publication Note: This RefSeq record includes a subset of the publications that are available for this gene. Please see the Entrez Gene record to access additional publications.</p> <p>Alias Symbols: IFI-78K, IFI78, MX, MxA</p> <p>Protein Interaction Partner: MX1, CAB39L, SIAH1, UBC, APP, ISG15, TRPC7, TRPC3, TRPC1, TRPC4, BLM, TRPC6, DAXX, TRPC5, TUBB, ACTB, PIAS1, SUMO1, SP100, FANCA,</p> <p>Protein Size: 662</p>
Molecular Weight:	75 kDa
Gene ID:	4599
NCBI Accession:	<a href="#">NM_002462</a> , <a href="#">NP_002453</a>
UniProt:	<a href="#">P20591</a>

## Application Details

Application Notes:	Optimal working dilutions should be determined experimentally by the investigator.
Comment:	Antigen size: 662 AA
Restrictions:	For Research Use only

## Handling

Format:	Liquid
Concentration:	Lot specific
Buffer:	Liquid. Purified antibody supplied in 1x PBS buffer with 0.09 % (w/v) sodium azide and 2 % sucrose.

## Handling

Preservative:	Sodium azide
Precaution of Use:	This product contains Sodium azide: a POISONOUS AND HAZARDOUS SUBSTANCE which should be handled by trained staff only.
Handling Advice:	Avoid repeated freeze-thaw cycles.
Storage:	-20 °C
Storage Comment:	For short term use, store at 2-8°C up to 1 week. For long term storage, store at -20°C in small aliquots to prevent freeze-thaw cycles.

## Publications

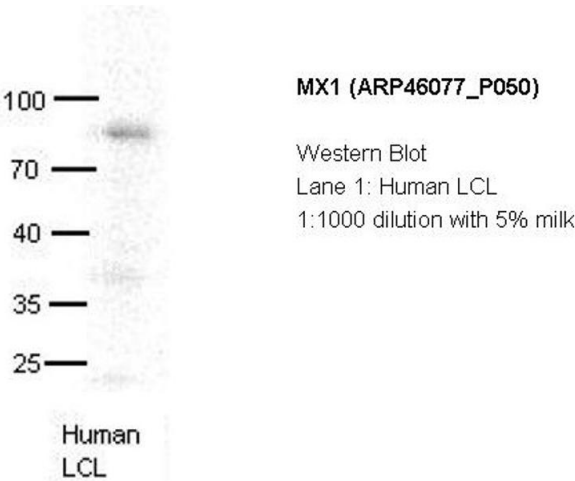
Product cited in:	Spellman, Ahmed, Dubach, Gardiner: "Expression of trisomic proteins in Down syndrome model systems." in: <b>Gene</b> , Vol. 512, Issue 2, pp. 219-25, (2012) ( <a href="#">PubMed</a> ).
-------------------	--

## Images

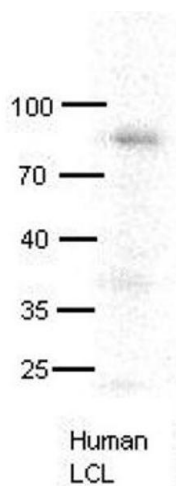


### Western Blotting

**Image 1. WB Suggested Anti-MX1 Antibody Titration:** 0.2-1 ug/ml  
**ELISA Titer:** 1:62500  
**Positive Control:** Hela cell lysate



### Image 2.



#### Western Blotting

**Image 3.** MX1 antibody - C-terminal region validated by WB using human LCL at 1:1000.

Please check the [product details page](#) for more images. Overall 4 images are available for ABIN2782470.