

Datasheet for ABIN2782490  
**anti-EPRS antibody (Middle Region)**[Go to Product page](#)

## 2 Images

## Overview

Quantity:	100 µL
Target:	EPRS
Binding Specificity:	Middle Region
Reactivity:	Human, Mouse, Rat, Rabbit, Horse, Cow, Dog, Guinea Pig, Zebrafish (Danio rerio)
Host:	Rabbit
Clonality:	Polyclonal
Conjugate:	This EPRS antibody is un-conjugated
Application:	Western Blotting (WB), Immunohistochemistry (IHC)

## Product Details

Immunogen:	The immunogen is a synthetic peptide directed towards the middle region of human EPRS
Sequence:	GKIVQIPFCG EIDCEDWIKK TTARDQDLEP GAPSMGAKSL CIPFKPLCEL
Predicted Reactivity:	Cow: 100%, Dog: 100%, Guinea Pig: 100%, Horse: 100%, Human: 100%, Mouse: 86%, Rabbit: 100%, Rat: 93%, Zebrafish: 93%
Characteristics:	This is a rabbit polyclonal antibody against EPRS. It was validated on Western Blot using a cell lysate as a positive control.
Purification:	Affinity Purified

## Target Details

Target:	EPRS
---------	------

## Target Details

Alternative Name: EPRS ([EPRS Products](#))

Background: Aminoacyl-tRNA synthetases are a class of enzymes that charge tRNAs with their cognate amino acids. EPRS is a multifunctional aminoacyl-tRNA synthetase that catalyzes the aminoacylation of glutamic acid and proline tRNA species. Aminoacyl-tRNA synthetases are a class of enzymes that charge tRNAs with their cognate amino acids. The protein encoded by this gene is a multifunctional aminoacyl-tRNA synthetase that catalyzes the aminoacylation of glutamic acid and proline tRNA species. Alternative splicing has been observed for this gene, but the full-length nature and biological validity of the variant have not been determined.

Publication Note: This RefSeq record includes a subset of the publications that are available for this gene. Please see the Entrez Gene record to access additional publications.

Alias Symbols: DKFZp313B047, EARS, PARS, PIG32, QARS, QPRS, GLUPRORS

Protein Interaction Partner: HUWE1, ISG15, UBC, AURKA, SUMO2, STAU1, LGR4, RPA3, RPA2, RPA1, SUZ12, RNF2, EZH2, CMYA5, VPS25, LRRC47, LARS, TES, IGF2BP3, LRRFIP1, TCEB2, RPL23A, RFC4, PTBP1, NEDD4, IARS, CDC42, EEF1D, FBXO6, EGFR, UBD, ITGA4, FN1, MAP1LC3A, gag, VCAM1, VBP1, UBA1, TC

Protein Size: 1512

Molecular Weight: 170 kDa

Gene ID: 2058

NCBI Accession: [NM\\_004446](#), [NP\\_004437](#)

UniProt: [P07814](#)

## Application Details

Application Notes: Optimal working dilutions should be determined experimentally by the investigator.

Comment: Antigen size: 1512 AA

Restrictions: For Research Use only

## Handling

Format: Liquid

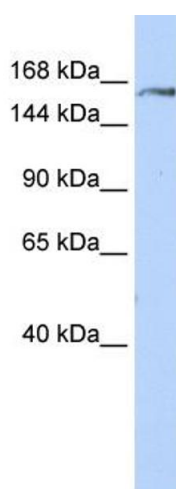
Concentration: Lot specific

Buffer: Liquid. Purified antibody supplied in 1x PBS buffer with 0.09 % (w/v) sodium azide and 2 % sucrose.

## Handling

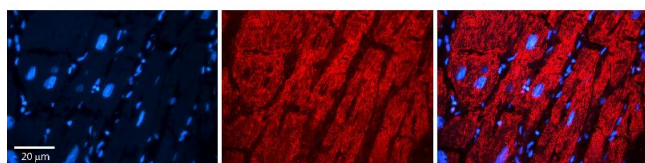
Preservative:	Sodium azide
Precaution of Use:	This product contains Sodium azide: a POISONOUS AND HAZARDOUS SUBSTANCE which should be handled by trained staff only.
Handling Advice:	Avoid repeated freeze-thaw cycles.
Storage:	-20 °C
Storage Comment:	For short term use, store at 2-8°C up to 1 week. For long term storage, store at -20°C in small aliquots to prevent freeze-thaw cycles.

## Images



### Western Blotting

**Image 1.** WB Suggested Anti-EPRS Antibody Titration: 0.2-1 ug/ml ELISA Titer: 1:312500 Positive Control: 293T cell lysate EPRS is strongly supported by BioGPS gene expression data to be expressed in Human HEK293T cells



### Immunohistochemistry

**Image 2.** Rabbit Anti-EPRS Antibody Formalin Fixed Paraffin Embedded Tissue: Human heart Tissue Observed Staining: Cytoplasmic Primary Antibody Concentration: N/A Other Working Concentrations: 1:600 Secondary Antibody: Donkey anti-Rabbit-Cy3 Secondary Antibody Concentration: 1:200 Magnification: 20X Exposure Time: 0.5 - 2.0 sec